

**EFFECTS OF BASAL FOREBRAIN STIMULATION ON
THE DISTRIBUTION OF CHOLINERGIC RECEPTORS IN
THE SENSORIMOTOR CORTEX OF RAT BRAIN**

by

Begüm Devlet

B.S. in Bioengineering, Yıldız Technical University, 2014

Submitted to the Institute of Biomedical Engineering

in partial fulfillment of the requirements

for the degree of

Master of Science

in

Biomedical Engineering

Boğaziçi University

2019

ACKNOWLEDGMENTS

Firstly, I would like to express my sincere gratitude to my advisor Prof. Burak Güçlü for the continuous support of my master study and related research, for his endless patience, high motivation, and immense knowledge.

I would like to thank to each member of Taclab. I am proud to be a part of it. I have the most supportive lab mates Bige Vardar, İpek Karakuş, Deniz Kılınc, Sevgi Öztürk who always trying to rise my motivation and emphatic attitude during my research.

My heartfelt, special thanks go to Andaç Kılıçkap for moral, emotional and unconditional supports and motivational speeches in every stage of my research since we met.

Finally, I must express my most profound gratitude to my parents for supporting me emotionally and spiritually throughout writing this thesis and my entire life.

This work was supported by Boğaziçi University Research Fund Grant no: 17XP2 to Prof. Dr. Burak Güçlü.

ACADEMIC ETHICS AND INTEGRITY STATEMENT

I, Begüm Devlet, hereby certify that I am aware of the Academic Ethics and Integrity Policy issued by the Council of Higher Education (YÖK) and I fully acknowledge all the consequences due to its violation by plagiarism or any other way.

Name :

Signature:

Date:

ABSTRACT

EFFECTS OF BASAL FOREBRAIN STIMULATION ON THE DISTRIBUTION OF CHOLINERGIC RECEPTORS IN THE SENSORIMOTOR CORTEX OF RAT BRAIN

In this thesis, the effects of basal forebrain stimulation on the distribution of $\alpha 4$ and $\alpha 7$ type nicotinic acetylcholine receptors were studied in three different brain areas: primary motor cortex, hindlimb somatosensory cortex and barrel field somatosensory cortex. Basal forebrain, the main source of cholinergic inputs, was electrically stimulated (for each trial: 0.5-ms bipolar pulses with 50 μ A, at 100 Hz for 0.5 s). In total, the experiment was carried out with 12000 pulses and it took 4 hours. After stimulation, transcardially perfusion was applied, and their brains were used for immunofluorescence staining. According to hemisphere in which the stimulation was applied and histological sections were obtained, the animals were separated into three experimental groups: control (no stimulation, n=7), ipsilateral (same hemisphere as stimulation, n=7) and contralateral (opposite hemisphere of stimulation, n=7). The results show that basal forebrain stimulation has a significant effect on the distribution of only $\alpha 7$ type nicotinic acetylcholine receptor. Ipsilateral and contralateral groups are statistically different from control group but there is no difference between ipsilateral and contralateral experimental groups. Specifically the number of receptor $\alpha 7$ complexes and their density of receptor complexes (normalized with layer thicknesses) were increased significantly with respect to control. Additionally, the number of $\alpha 7$ type receptor complexes and the density in primary motor cortex were mostly lower than those in the hindlimb area and barrel field of primary somatosensory cortex. A similar finding was found for only $\alpha 4$ type receptor count but not for the density. Overall, this thesis shows anatomical evidence for cholinergic modulation of somatosensory system. The results may be important for understanding attentional processes, and neuropsychiatric diseases which affect them.

Keywords: Somatosensory, Cholinergic system, Attention, Nicotinic acetylcholine receptor.

ÖZET

BAZAL ÖNBİYİN UYARIMININ SIÇAN BEYİNİ SENSORİMOTOR KORTEKSTEKİ KOLİNERJİK RESEPTÖR DAĞILIMINA ETKİSİ

Bu tez çalışmasında, bazal ön beyin uyarımının üç farklı korteks bölgesindeki (birincil motor korteks, birincil beden duyusu korteksinin arka bacak ve bıyık alanları) $\alpha 4$ ve $\alpha 7$ nikotinik asetilkolin reseptör dağılımını nasıl etkilediği çalışılmıştır. Kolinerjik girdilerin ana merkezi olan bazal ön beyin elektriksel olarak uyarılmıştır (her deneme için: 0.5-ms'lik bipolar darbe (50 μ A), frekans 100 Hz). Toplam olarak, deney 12000 darbe ile yapılmış olup, 4 saat sürmüştür. Uyarım sonrasında, hayvanlar transkardiyal olarak perfüze edilmiş, ve beyinleri immunofloresan boyama uygulaması için çıkarılmıştır. Bazal ön beyin uyarımının hangi yarımküreye uygulandığına, ve boyama kesitlerinin hangi yarımküreden alındığına bağlı olarak hayvanlar üç deneysel gruba ayrılmıştır: kontrol (uyarım yok, n=7), uyarım ile aynı yarımküre (n=7) ve uyarım ile farklı yarımküre (n=7). Sonuçlar bazal ön beyin uyarımının sadece $\alpha 7$ nikotinik reseptör alt tipi dağılımı üzerinde anlamlı bir etkisi olduğunu göstermektedir. Uyarım ile aynı yarımküre ve farklı yarımküre grupları kontrol grubundan farklı çıkmış ancak uyarı ile aynı yarımküre ile farklı yarımküre olan gruplar arasında bir fark gözlenmemiştir. $\alpha 7$ reseptör kompleks sayısında ve yoğunluğunda kontrol grubu ile karşılaştırıldığında anlamlı derecede artış gözlenmiştir. Ek olarak, $\alpha 7$ reseptör kompleks sayısı ve yoğunluğu korteks bölgeleri arasında birincil motor korteksinde diğer tüm alanlardan daha az olduğu görülmüştür. Benzer bulgular $\alpha 4$ tipi için sadece reseptör kompleks sayısı açısından bulunmuştur. Sonuç olarak, bu çalışma beden duyusu korteksinde kolinerjik modülasyonuna anatomik bulgular sunmuştur. Elde edilen sonuçlar dikkat mekanizmalarının ve ilgili nöropsikiyatrik hastalıkların bu mekanizmaları nasıl etkilediğinin anlaşılmasında önemli veri sağlayabilir.

Anahtar Sözcükler: Beden duyusu, Kolinerjik sistem, Dikkat, Nikotinik asetilkolin reseptör.

TABLE OF CONTENTS

ACKNOWLEDGMENTS	iii
ACADEMIC ETHICS AND INTEGRITY STATEMENT	iv
ABSTRACT	v
ÖZET	vi
LIST OF FIGURES	ix
LIST OF TABLES	xi
LIST OF SYMBOLS	xii
LIST OF ABBREVIATIONS	xiii
1. INTRODUCTION	1
1.1 Motivation	1
1.2 Hypothesis	2
1.3 Outline	2
2. BACKGROUND	3
2.1 Attention and Cholinergic System	3
2.2 The Role of Acetylcholine in Attention	5
2.3 Structure of acetylcholine receptors	7
2.3.1 Muscarinic acetylcholine receptors	7
2.3.2 Nicotinic acetylcholine receptors	9
2.4 Structure of Neocortex	13
2.5 Basal Forebrain and Its Role in Cholinergic System	16
3. MATERIALS and METHODS	19
3.1 Animals and Husbandry	19
3.2 Electrophysiology	19
3.3 Histological Procedures	22
3.3.1 Nissl Staining	22
3.3.2 Immunocytochemistry	22
3.4 Counter Staining for Immunofluorescence	26
3.5 Cell Counting	27
3.6 Statistical Analysis	28

3.6.1	Nissl stained data	28
3.6.2	Immunostained data	29
4.	RESULTS	30
4.1	Nissl Stained Data	30
4.2	Immunostained Data	32
5.	DISCUSSION	42
5.1	General Conclusion	42
5.2	Comparison with Previous Literature	43
5.3	Limitations	44
5.4	Future Work	45
6.	LIST of PUBLICATIONS PRODUCED FROM THE THESIS	46
	REFERENCES	47

LIST OF FIGURES

Figure 2.1	The overview of the cholinergic pathways in the rat brain	3
Figure 2.2	Schematic illustration of top-down cholinergic modulation	5
Figure 2.3	Illustration of homomeric and heteromeric structure	9
Figure 2.4	Structure of nAChRs	10
Figure 2.5	Distribution of different nAChR subtypes in the rat brain	12
Figure 2.6	The neurons of neocortex	14
Figure 2.7	Excitatory cortical circuitry in primary sensory cortex	15
Figure 2.8	Basal forebrain nuclei	17
Figure 2.9	Basal forebrain	17
Figure 3.1	Stereotaxic coordinates for electrical stimulation of BF	20
Figure 3.2	Two separate stimulation mapping experiments	20
Figure 3.3	NBM neurons are located at SI region of Brain	21
Figure 3.4	Goat anti-rabbit IgG (H+L) with Alexa Fluor 594 excitation and emission wavelength	23
Figure 3.5	$\alpha 7$ subtype staining of hippocampus region	24
Figure 3.6	$\alpha 4$ subtype staining of hippocampus region	24
Figure 3.7	$\alpha 7$ subtype staining of cerebellum	25
Figure 3.8	$\alpha 4$ subtype staining of cerebellum	25
Figure 3.9	DAPI dihydrochloride (Sigma D9542) excitation and emission wavelength	27
Figure 4.1	Nissl staining samples from M1, S1HL and S1BF in Neocortex	30
Figure 4.2	Layer thicknesses from three different cortical areas	31
Figure 4.3	The thickness of layers in interested cortical areas	32
Figure 4.4	DAPI staining for counting the total number of cells in S1HL layer I-II-III	34
Figure 4.5	DAPI staining for counting the total number of cells in S1BF layer I-II-III	35
Figure 4.6	$\alpha 4$ nAChRs staining for counting the total number of receptors in S1BF layer I-II-III	35

Figure 4.7	$\alpha 4$ nAChRs staining for counting the total number of receptors in M1 layer V	36
Figure 4.8	$\alpha 7$ nAChRs staining for counting the total number of receptors in S1HL layer I-II-III	36
Figure 4.9	$\alpha 7$ nAChRs staining for counting the total number of receptors in S1BF layer I-II-III	37
Figure 4.10	Stimulation relationship for $\alpha 4$ and $\alpha 7$	38
Figure 4.11	Stimulation relationship for both $\alpha 4$ and $\alpha 7$ subtypes	39
Figure 4.12	$\alpha 4$ Layer differences	40
Figure 4.13	$\alpha 7$ Layer differences	41

LIST OF TABLES

Table 4.1	Layer thicknesses from three different cortical areas.	31
Table 4.2	N, D and C values for $\alpha 4$ nAChRs.	33
Table 4.3	N, D and C values for $\alpha 7$ nAChRs.	34

LIST OF SYMBOLS

Ca^{2+}	Calcium ion
Cl^{-}	Chlorine ion
h	Hour
Hz	Hertz
K^{+}	Potassium ion
μ	Micro
Na^{+}	Sodium ion

LIST OF ABBREVIATIONS

<i>ACh</i>	Acetylcholine
<i>AChRs</i>	Acetylcholine receptors
<i>AD</i>	Alzheimer's disease
<i>ADHD</i>	Attention deficit hyperactivity disorder
<i>BF</i>	Basal forebrain
<i>IP</i>	Intraperitoneally
<i>LDT</i>	Laterodorsal pontine tegmentum
<i>M1</i>	Primary motor cortex
<i>mAChRs</i>	Muscarinic acetylcholine receptors
<i>nAChRs</i>	Nicotinic acetylcholine receptors
<i>NBPFA</i>	Neutral buffered paraformaldehyde
<i>NGS</i>	Normal goat serum
<i>NBM</i>	Nucleus basalis of Meynert
<i>PB</i>	Phosphate buffer
<i>PBT_x</i>	PB that contains TritonX-100
<i>PBT_{xg}</i>	PBT _x in NGS
<i>PDD</i>	Parkinson's disease
<i>PPT</i>	Pedunculopontine tegmental nucleus
<i>S1</i>	Primary somatosensory cortex
<i>S1HL</i>	Primary somatosensory hindlimb area
<i>S1BF</i>	Primary somatosensory barrel field
<i>SI</i>	Substantia innominata
<i>vDB</i>	Vertical limbs of the diagonal band of Broca

1. INTRODUCTION

1.1 Motivation

At any given moment, brain receives thousands of inputs from environment although it cannot process all inputs. Therefore, there should be a mechanism that selects some inputs and eliminates others. This mechanism is called attention. Attention can be accepted as one of the cognitive functions and cholinergic system is the most important component of it. Cholinergic system modulates brain functions and activities by controlling neurotransmitter release. The acetylcholine (ACh) that is the main component of the cholinergic system is the one of the first molecules discovered as a neurotransmitter, thus its function in the brain has not been fully understood. Abnormalities in the cholinergic system mostly depends on changes in ACh levels and receptor expression. These changes associate with several neurodegenerative and cognitive diseases such as Alzheimer's disease (AD), Parkinson's disease (PDD) and attention deficit hyperactivity disorder (ADHD). The most of attention research focuses on mechanisms of selection within sensory modalities, like vision, audition and touch, but still there are several questions that should be answered, such as which cortical areas are essential for attention when there is a tactile stimulus.

It is still not clear how cholinergic effects are mediated while processing information in the neocortex. We attempt to clarify that by studying the distribution of cholinergic receptor subtypes in different layers in sensorimotor cortex areas after basal forebrain stimulation, the main source of cholinergic inputs. Our study will potentially contribute to how the cholinergic inputs into these areas in the cortex affect the responses of neurons and cholinergic circuitry. Based on the current knowledge, this will be the quantitative study which investigates the relationship between the basal forebrain stimulation and sensorimotor cortex in the brain at receptor level of $\alpha 4$ and $\alpha 7$ type of cholinergic receptors.

1.2 Hypothesis

The aim of this study was to investigate the effects of basal forebrain stimulation on the distribution of nicotinic acetylcholine receptors in the different brain regions specifically, primary somatosensory cortex (hindlimb and barrel areas) and motor cortex.

According to the current knowledge, we expected that there will be a change in cholinergic receptor expression after basal forebrain stimulation. The hypothesis of this thesis was that the expression of nicotinic acetylcholine receptors would change on primary somatosensory and motor cortex areas due to the basal forebrain stimulation.

1.3 Outline

In the first chapter, motivation and hypothesis of the study was presented. In the second chapter, information about attention and cholinergic system was given in general, such as structure of acetylcholine receptors, their role in attention and their localization in cortex, structure of neocortex, and basal forebrain structure and its role in cholinergic system. In chapter 3, materials and methods of this study were explained. The results of the experiments were presented in the chapter 4. In the last chapter, the general conclusions were presented and the results were discussed with limitations and future work.

2. BACKGROUND

2.1 Attention and Cholinergic System

Cholinergic system might be the most significant modulatory neurotransmitter system in the brain and controls activities that depend on several cognitive functions such as attention, learning and memory [1, 2, 3, 4, 5].

Cholinergic system projections can be categorized into two groups: the basal forebrain (BF) cholinergic system and the brainstem cholinergic system. The BF cholinergic system cells are located in four different regions which are nucleus basalis of Meynert (NBM), the vertical limbs of the diagonal band of Broca (vDB), the medial septal nucleus (MS) and substantia innominata (SI). These regions send their projections to neocortex, entorhinal cortex, hippocampus, amygdala and olfactory bulb while the brainstem cholinergic system with its cells located in the pedunculopontine tegmental nucleus (PPT) and laterodorsal pontine tegmentum (LDT). Their projections are sent to the thalamus and BF (Figure 2.1) [6, 2, 7, 8].

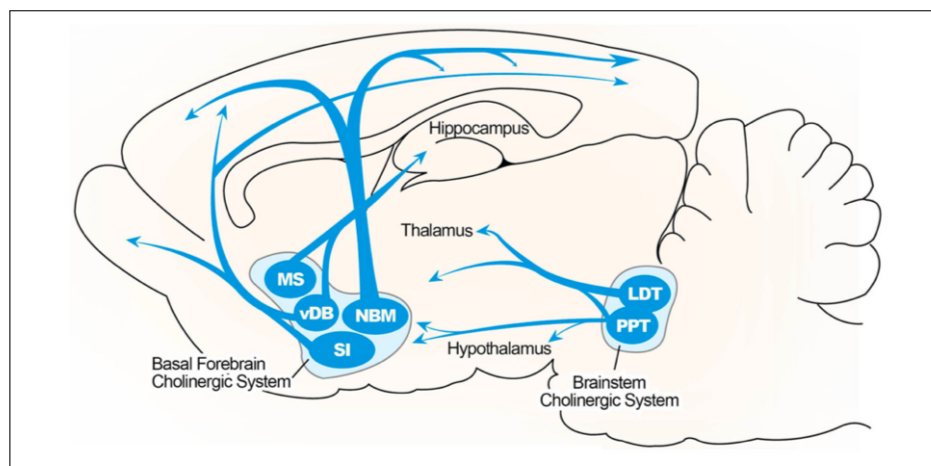


Figure 2.1 The overview of the cholinergic pathways in the rat brain [9].

In general, the anatomical organization of cortical cholinergic fibers shows a widespread, uniform innervation of cortical areas and also cortical layers [10]. Al-

though the density of cholinergic fibers differs, the distribution of cholinergic terminals in the cortex shows that all cortical areas and layers contain these fibers [11, 10].

Cholinergic influences on attention can be associated with performance on attention tasks. Additionally, cholinergic neural transmission between primary and secondary sensory regions can regulate stimulus processing by affecting signal-to-noise ratio, information flow, and response selectivity [12, 1].

In order to understand sensory processing, identifying the direction of the information flow is an important step. There are three directions which information transfer can occur. The first one is feedforward or bottom-up processing. The second one is feedback or top-down processing and the other is lateral processing which refers to horizontal connection between different brain areas [12, 6, 13].

Spence [14], Sarter et al. [15], and Himmelheber et al. [16] tried to understand how the sensory information was processed in the brain and they showed that the cholinergic system contributes to attention by enhancing the process of sensory inputs. Enhancement of input processing occurs with two not only different but also interacting mechanisms in cholinergic system. One of them is bottom-up which is merely mediated by external inputs via sensory systems. The other, top-down, is mediated by knowledge based on changes in signal detection through prefrontal modulation of cholinergic inputs (Figure 2.2) [17, 3, 10, 18]. These two processes direct the attentive focus control [19].

Top-down processes are knowledge driven mechanisms which improve the neuronal processing of relevant sensory inputs. On the other hand, bottom-up processes are operated by the characteristics of the stimulus. In many situations, bottom-up and top-down interact to reach the optimal attentional performance [5, 18, 4, 20]. Cortical cholinergic activity includes complex interactions between bottom-up and top-down mechanisms and mediates improvement of input processing at cellular level and also attentional performance at behavioral level [3].

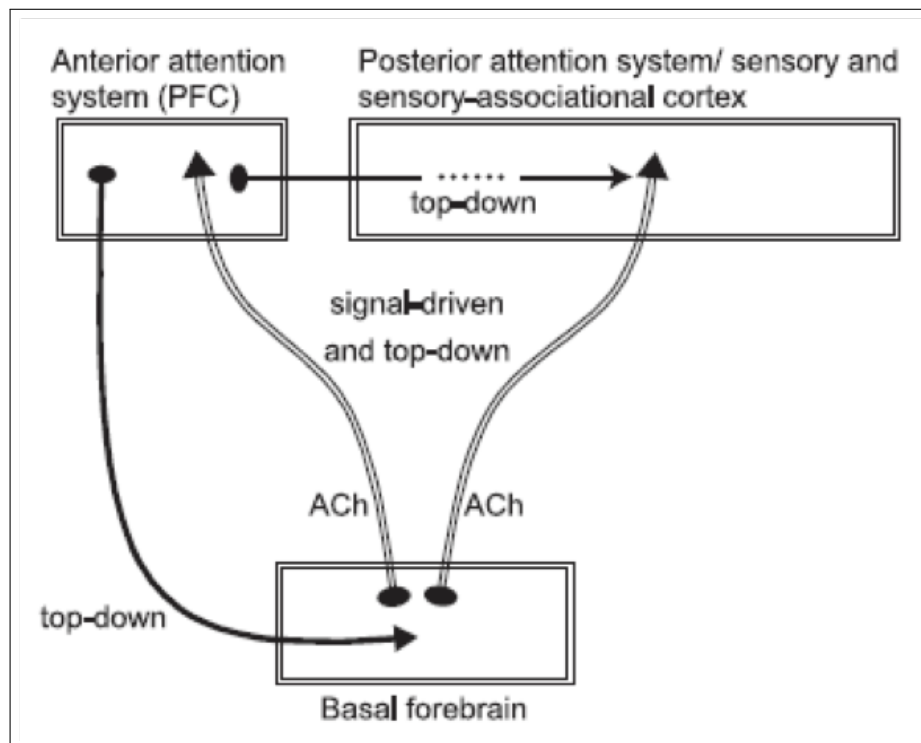


Figure 2.2 Schematic illustration of top-down cholinergic modulation [3].

2.2 The Role of Acetylcholine in Attention

ACh which is the main component of the cholinergic system has a significance in several cognitive functions such as attention, learning and memory [21, 22]. Although small number of cells produce ACh that is a key neurotransmitter, its effects are widely distributed in the brain [6]. ACh manages attention in two ways: adapting to environmental stimuli and reduces responses to ongoing stimuli or increasing responses to ongoing stimuli [23, 24]. Previous studies suggest the hypothesis that cortical ACh mediates the detection, selection and the processing of sensory information by increasing the responsiveness of cortical neurons to other afferent inputs while suppressing other inputs [25, 10, 26, 27]. The enhancement of sensory input processing affects stimulus intensity [3].

Parikh et al. [28] by using cyclic voltammetry technique shows that the attention required events resulted in ACh release in the frontal cortex and increased levels of ACh when attentional effort was required. [28, 29].

Klinkenberg et al. [21], Rasmusson et al. [30] and Sarter et al. [31] studied about the cortical cholinergic input system, generally concentrated on the diffusion of cholinergic projections. They suggest that levels of extracellular ACh which alter slowly mediate different cognitive functions. The ability of to reach extra synaptic space instead of remaining synaptic cleft is considered to be the main issue for understanding cholinergic system [21, 30, 31].

Source of the information which can be top-down or bottom-up can affect the response of heterogeneously distributed ACh in the brain. For instance, in somatosensory cortex, acetylcholine receptors (AChRs) suppress or facilitate excitatory or inhibitory inputs that come from cortico-cortical connections. Conversely, excitatory thalamo-cortical inputs are not suppressed or facilitated by AChRs [3].

Sarter et al. [15, 3], Parikh et al. [22] suggest that two different acetylcholine receptor subtypes have different roles in cognitive processes, and it can be stated that the mediation of intrinsic connections (top-down) which can be excitatory or inhibitory are via muscarinic acetylcholine receptors (mAChRs). On the other hand, sensory input processing (bottom-up) is regulated by nicotinic acetylcholine receptors (nAChRs) [26]. Lesioning is one of the techniques which is used by many researchers in order to understand the relationship between the cholinergic neurons which release acetylcholine and increased attentional performance. However, lesions might affect all neurons containing glutamatergic or GABAergic receptors. Therefore, this makes it difficult to understand the role of ACh in the cholinergic system. This is solved with the development of cholinergic immunotoxin 192-IgG-saporin which selectively binds to AChRs [12, 21].

Sarter et al. [15] and Mirza et al. [32] to understand the role of different subtypes of AChRs in cholinergic modulation applied antagonists. Their results suggest that both acetylcholine receptor subtypes are necessary for attention. The presence of two different antagonists which have specificity for nAChRs and mAChRs suggest that both nicotinic and muscarinic receptor subtypes have an importance at different stages of information processing. The first one may be important in the early stages of

stimulus while the other is important in later stages of response selection [16, 32, 15].

On the other hand, Herrero et al. [33] performed a study with non-human primates (*Macaca mulatta*) to investigate ACh application effects on attentional performance. Its results show that attentional modulation can be increased by applying low doses of ACh and in order to understand which subtype contributes to increased attentional performance, nicotinic and muscarinic antagonists are applied. The result suggested that muscarinic antagonist suppresses increased attentional performance while nicotinic antagonist has no effect [33].

2.3 Structure of acetylcholine receptors

ACh is widely distributed in the brain and it can be the accepted modulator instead of neurotransmitter regulating information processing because its concentration alters significantly in one region of the brain to another. ACh consists of two groups which are synthesized from choline and acetyl group by acetyl-coenzyme A. The ACh is synthesized in the axonal terminals and catabolized by the choline acetyltransferase [34, 35, 36].

2.3.1 Muscarinic acetylcholine receptors

ACh can alter the excitability and firing properties of cortical pyramidal neurons by activating muscarinic acetylcholine receptors. According to the current knowledge of muscarinic-induced cortical processing, there are two main models: muscarinic signaling enables the cortex to depend on information coming from the sensory organs, or muscarinic signaling enables efficient filtering of information [36].

Application of cholinergic antagonists show that receptive field properties can be changed in sensory areas, especially somatosensory and auditory cortex [37, 38]. The discovery of the muscarinic acetylcholine receptor and its binding sites are based on the study about physiological effects of mushroom. At present, pharmacological, immunological, biochemical and molecular biology studies demonstrate that there are

five different subtypes for mAChRs [38, 36].

The mAChRs are the member of large family of receptors called G-coupled metabotropic receptors. There are five identified subtypes of muscarinic receptors (M1-M5) in mice while rats have four of them; M1-M4 [39, 34]. These receptor subtypes have different regional localization. The M1 receptors are present in cortex and striatum while the M2 receptors locate predominantly in cortex and basal forebrain. M3 subtype is reported in the basolateral and central amygdala and hippocampus. On the other, the M4 receptors are found in neostriatum and olfactory bulb [40, 33, 41].

Besides this general idea about the distribution of mAChRs, the M1, M2 and M4 localize differently in the cortex that has a six-layered structure. Immunostaining studies show that the distribution of mAChRs in the cortex is characterized by the laminar distribution. Predominantly, layer V pyramidal neurons contain these receptors and they project apical dendrites and branches to the layer I and II. In addition, less mAChRs is shown that layer II, III and VI and the least in the layer IV [6, 40, 42, 43, 36].

mAChRs can be located both postsynaptically and presynaptically positions, whereas presynaptic function is limited with M2 type. Therefore, all types can change excitability of neurons and release various neurotransmitters but only M2 type receptors show cholinergic feedback control over ACh release [29]. For the postsynaptic position, they can be on the soma or apical dendrites. Postsynaptic labeled mAChRs are mainly concentrated in layer IV. ACh increases the depolarization of the neuron in the cortex by activation of mAChRs postsynaptically located. The presynaptically located mAChRs which can be on the terminal of the neuron modulate the release of ACh itself [44, 36].

In the nervous system, mAChR activation has primary effects on K^+ , Ca^{2+} cation channels by increasing input resistance of cells, and excitability. However, Na^+ and Cl^- channels also may be affected [36].

2.3.2 Nicotinic acetylcholine receptors

In order to understand the role of nAChRs in sensorimotor cortex, more information are required such as different subtypes of nAChRs, their respond to ACh or psychoactive drugs, location of them in areas, layers and synaptic cleft [45]. nAChRs which consist of five subunits centered around a pore are ligand gated ion channel play a role in many sensory-cognitive functions. Its structure can be described as a combination of α and β subunits called a heteromeric receptor or five α subunits as a homomeric receptor. Each heteromeric nAChR has two binding sites, and homomeric receptors have five binding sites. There are nine α subunits ($\alpha 2-10$) and three β subunits ($\beta 2-4$) distributed across different nicotinic receptors subtypes [46, 47, 48, 49] (Figure 2.3). Besides the subunit variability, $\alpha 7$ and $\alpha 4\beta 2$ are widely expressed subtypes in the mammalian brain [50, 51, 52].

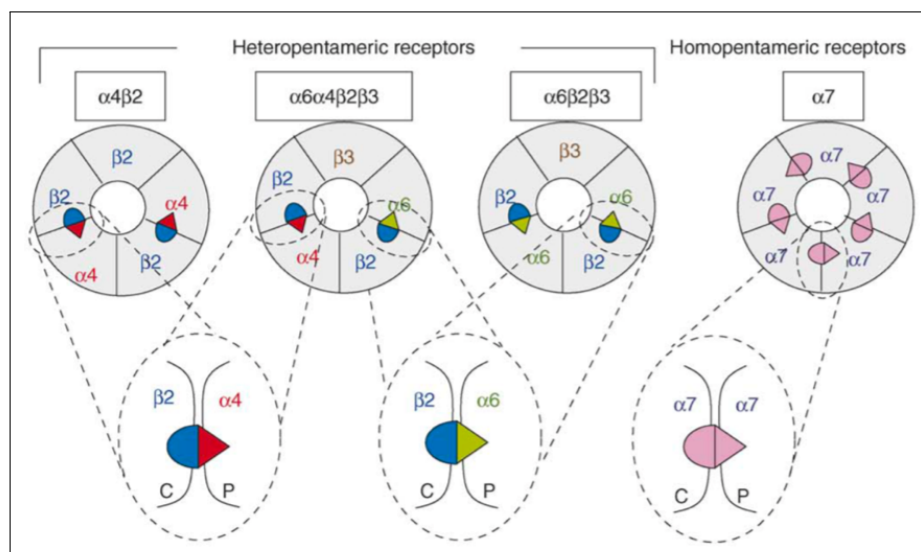


Figure 2.3 Illustration of homomeric and heteromeric structure [47].

nAChRs which are controlled by an extracellular signaling molecule, they regulate the flow of ions across the cell membrane [53]. The ion channel depolarizes the cell membrane and the excitability increases due to the net influx of cations [53, 54, 55]. Nicotinic modulation of neurotransmitter release vary according to subtypes, and this

variability can be different within brain areas [56, 24, 57].

nAChRs consist of extracellular amino terminal domain that has the ACh binding site and also called cys-loop, four hydrophobic transmembrane domains and a long cytoplasmic loop, and other shorter loops connecting the domains. [58, 46, 59, 60] (Figure 2.4).

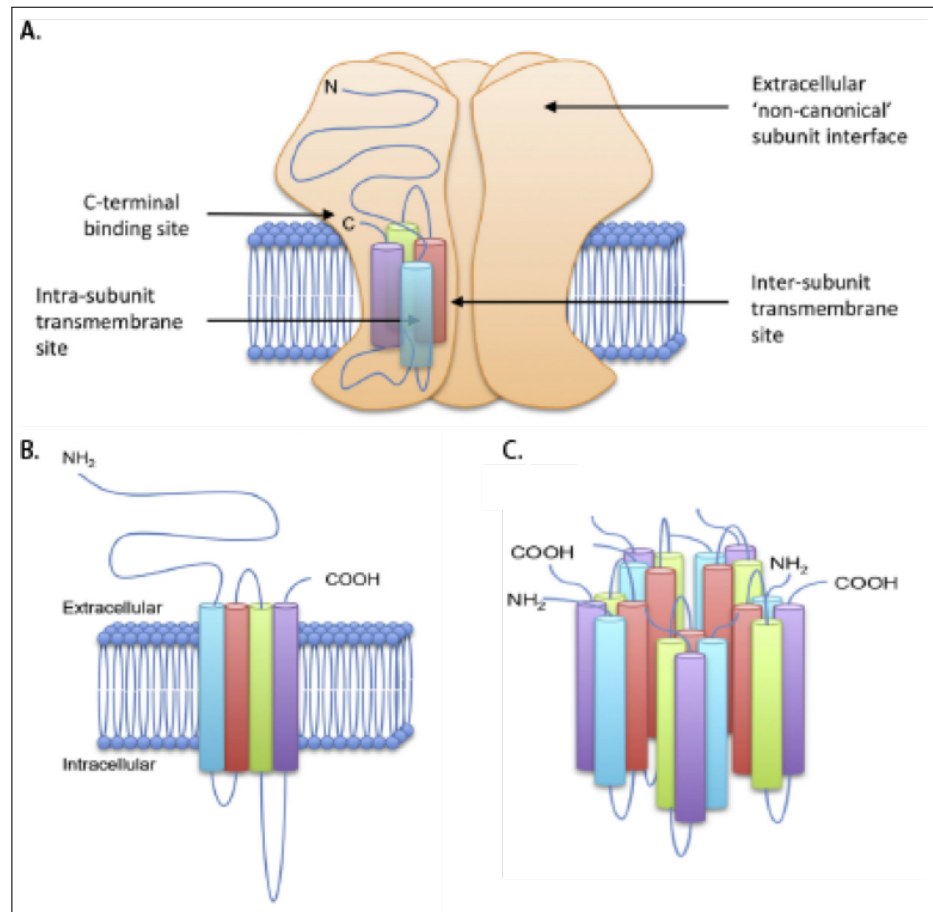


Figure 2.4 Structure of nAChRs [58].

The contribution of nAChRs to cognitive functions such as attention can be understood better by specifying the distribution of different subtypes of receptor. Ligands like the frog toxin epibatidine or the snake toxin α -bungarotoxin are used for these purposes in the previous studies [49, 61, 60]. Additionally, [³H] epibatidine or [¹²⁵I] epibatidine can be used to label heteromeric nAChRs which have high affinity, while [¹²⁵I] α -bungarotoxin was used to label α 7-containing homomeric nAChRs which have low affinity [62].

There is also another mapping technique which is the α -bungarotoxin sensitive or insensitive. α -bungarotoxin sensitive receptors might be homomeric or heteromeric but α -bungarotoxin insensitive receptors only can be heteromeric receptors [63, 46, 48].

nAChRs can be found in three possible conformational states. These are the closed state at rest, the open state, and the desensitized state. With binding of ACh or other agonists, nAChRs change their conformation from closed to open state for several milliseconds. Then following state of receptor is desensitized which means unresponsive to agonists for a very brief moment. The rate of changes between conformational states can be affected from many factors like subunit composition. When the receptor is open, nAChR current consists of sodium, potassium and calcium which make an important contribution [64, 65]. nAChR's permeability is not limited with just sodium and potassium ions; they are permeable to calcium ions and this permeability can depend on receptor subtypes. For example, $\alpha 7$ homomeric nAChRs have high calcium permeability and rapid activation while $\alpha 4\beta 2$ receptors have lower calcium permeability [66, 64, 67, 46].

nAChRs can have both presynaptic and postsynaptic localization [68, 56, 35]. According to their localization, their effects to the cognitive processes are different. Firstly, they can be found on dendrites and cell bodies presynaptically. Presynaptically localized nAChRs can modify synaptic transmission by regulating the amount of both excitatory and inhibitory neurotransmitter release [69, 70]. In the post synaptic location, nAChRs are responsible for rapid excitation [71, 63]. Additionally, nAChRs can be located on extra-synaptic sites so they can change cell excitability on post synaptic cells and neurotransmitter release at presynaptic sites [46, 53, 35].

Generally, these receptors are located presynaptically on thalamocortical terminals in layer III and IV [72]. The other receptor location is on axon terminals which means postsynaptically. nAChR open state is modulated by external calcium ions that have an effect on cholinergic synaptic currents. Additionally, the calcium influx through these receptors is enough to activate calcium dependent chloride and potassium channels. nAChRs also mediate rapid excitation of postsynaptic neurons [45, 70, 73, 48].

According to our current knowledge, nAChRs are widely and nonuniformly distributed in the brain; the most expressed subtypes are $\alpha 7$ and $\alpha 4\beta 2$. Homomeric $\alpha 7$ subunit receptors are mainly expressed in the cortex, hippocampus and subcortical

limbic regions while they are expressed less in the thalamic regions and basal ganglia. On the other, $\alpha 4\beta 2$ can be almost all brain regions but mainly they are expressed in the cortex, striatum and cerebellum [46, 47, 74, 75, 76] (Figure 2.5).

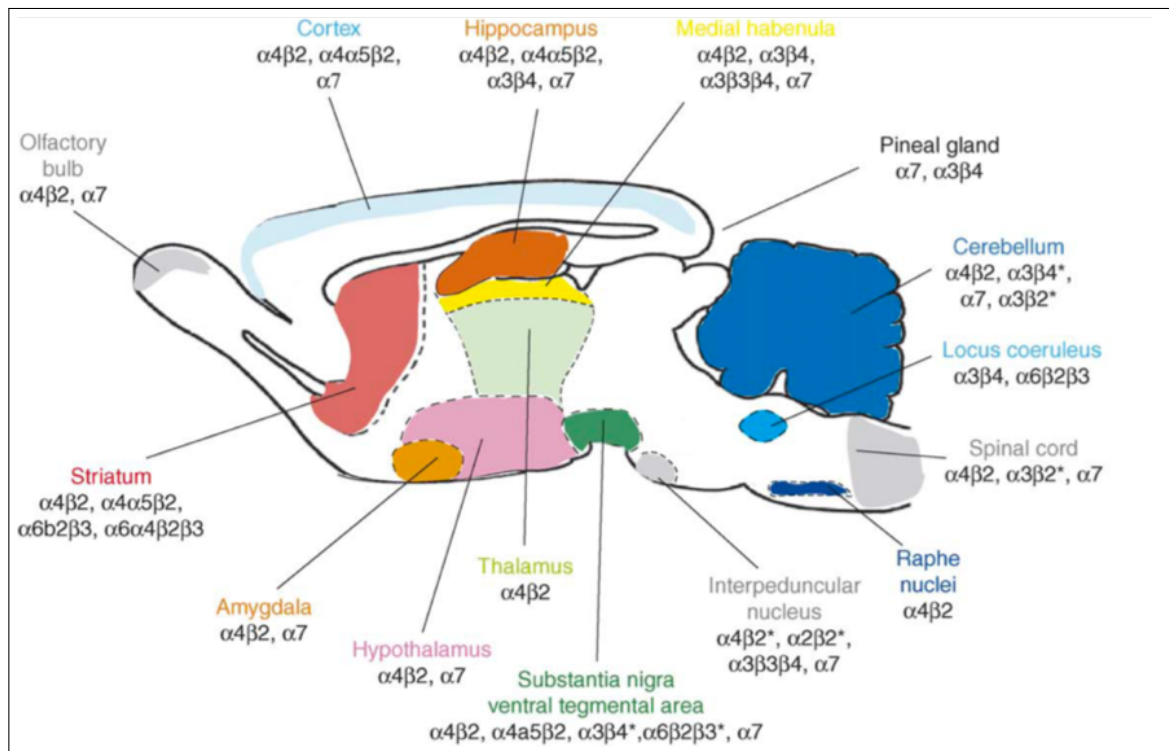


Figure 2.5 Distribution of different nAChR subtypes in the rat brain [60].

In the cortex, nAChRs are found mostly in deep layers with high density. These are layer IV where the inputs came from thalamus and layer V/VI [77, 78]. Also, they can be found in supragranular layers in inhibitory cells, including all layer I interneurons. In sensory cortical areas, the inputs that come from the thalamus enter the layer IV of the cortex in bottom-up processing. Layer IV neurons project to the upper layers. Layer V conveys the information to the deepest layer which is the layer VI. The deepest layer sends inputs back to the superficial layers [6, 45, 15, 65].

2.4 Structure of Neocortex

It is considered that high cognitive functions develop with the evolution of the neocortex in mammals. However, neocortices of different mammalian species can be significantly different in terms of shape, size, and neuron number. In order to understand how brain works and neocortex structure models of neocortical development depend on studies of the mouse and rat because their neocortex have many common features in all mammals, in general including a six-layered organization [79, 80].

The neocortex is organized into columns and layers. Behind its approximately 2.5 mm thickness (on average in mammals), there are thousands of cell types, a lot of layers, and complex connectivities. The connections between cells shows a columnar flow of information within some layers of cortex [81, 82].

Columnar cortical circuits conduct afferent input conveying "bottom-up" and "top-down" information. Bottom-up inputs arrive from mostly the thalamus, which gets inputs from sensory systems and the spinal cord, cerebellum etc. Top-down input arises primarily from association areas of the cerebral cortex and secondary thalamic areas [83]. These complex input-output relationships depend on layer organization of cortical neurons; each layer contains different inputs and outputs. Most of the neocortex contains six layers, defined from the external layers of the cortex to the white matter with roman numerals [84, 85] (Figure 2.6).

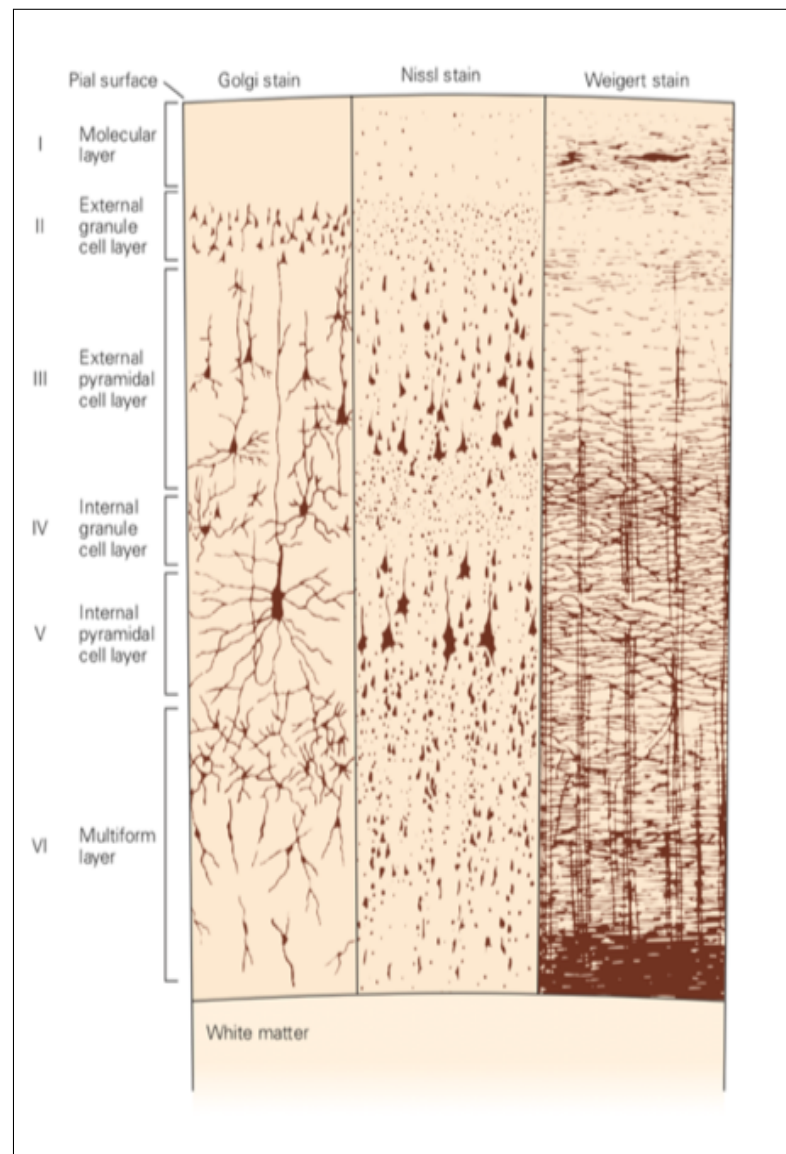


Figure 2.6 The neurons of neocortex [84].

Layer I, called as the molecular layer, comprises of the dendrites and axons of cells found in deeper layers. Layer II, the external granular cell layer, is one of two layers that contain small spherical neurons. Layer III is called the external pyramidal cell layer that has moderate and large sized pyramidal neurons. Additionally, there are some granular neurons. Afferent fibers comes from thalamus and cortico-cortical connections reach layer III and I. Layer IV called the internal granular cell layer, contains a large number of small spherical neurons. It is the main layer that sensory input comes from the thalamus. The next layer, the internal pyramidal cell layer, contains

mainly pyramidal cells that are larger than cells found in layer III. Pyramidal neurons in this layer form major output pathways of the cortex, project their axons to other cortical areas. The neurons in layer VI are fairly heterogeneous and so it is called the polymorphic or multi-form layer [86, 84, 87].

Excitatory neurons make up approximately 80% of the total neuron population of the neocortex. The first group of excitatory neurons consist of spiny stellate neurons which are found on only in the layer IV and generally responsible for conveying thalamocortical inputs. Additionally, their axons make connection with basal dendrites of pyramidal neurons in layer III and IV. The second class of excitatory neurons include pyramidal neurons. Their projections go into the corpus callosum. The third class of excitatory neurons are pyramidal neurons that locate in layer V. They project to deep subcortical areas such as the spinal cord and brainstem. The final group of excitatory neurons are corticothalamic pyramidal neurons mainly found in layer VI. Their apical tufts may branch within layer IV. Therefore, in the same time they can receive thalamocortical connections with their apical tufts and their basal dendrites can receive inputs from layer V pyramidal neurons [83, 82, 87] (Figure 2.7).

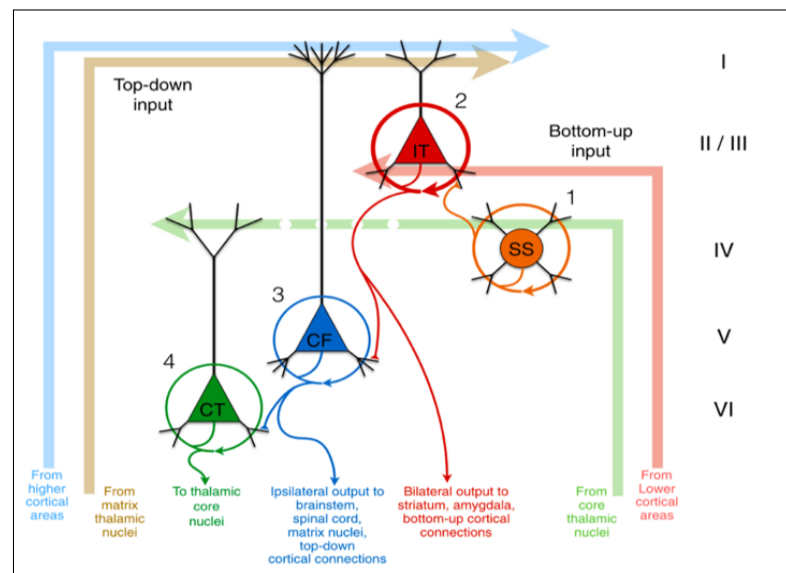


Figure 2.7 Excitatory cortical circuitry in primary sensory cortex (1) spiny stellate neuron (2) intratelencephalic neuron (3) corticofugal neuron (4) corticothalamic neuron [83].

2.5 Basal Forebrain and Its Role in Cholinergic System

Cholinergic neurons originate from four regions. These include the brainstem, thalamic nuclei, the striatum and the basal forebrain nuclei which are the major sources of cholinergic projections to neocortex [19].

The cholinergic system which originated in the BF has a importance for increasing bottom-up sensory input to the cortex and cortical coding by decreasing noise correlations [88, 89].

BF can be defined as a continuation of subcortical neurons that project to neocortical and other brain areas. It has several different types of neurons that are cholinergic, non-cholinergic projection neurons and interneurons which contribute to different ascending or descending pathways. BF cholinergic system that can be considered as a main component of top-down processes makes contribution to many cortical processes such as attention, learning and memory [90, 91, 4, 92, 93]. Previous studies demonstrate that BF cholinergic system contributes to attention in two ways. The first is managing detection process which can be defined as altering attention from ongoing activities to awareness of stimuli. The other is the activation of cue-associated response [94, 95, 96, 22].

The cell bodies of the BF cholinergic neurons are categorized in four different groups: MS nucleus which project mainly to the hippocampus, vDB (both vertical and horizontal domains) projecting to the hippocampus and cingulate cortex, NBM that project primarily to the olfactory bulb and entorhinal cortex, and SI projecting neocortex and amygdala [19, 22, 91, 97, 93] (Figure 2.8).

The nucleus basalis of the basal forebrain which is the main component of the neuromodulatory system targets the cortex. ACh is released in the cortex by neurons whose cell bodies are located in the BF, so the nucleus basalis is accepted as a main source of cortical ACh [98, 99]. ACh release increases via stimulation of the nucleus basalis and it can change neuronal excitability and synaptic efficacy, signal-noise ratio, and regulate sensory processing [100, 101, 102, 90, 103]. Previous studies show that in order to understand neurons's excitability paired nucleus basalis and sensory stimulation should be applied. As a result of these kinds of paired stimulation, cortical firing properties vary between cortical layers (increase in layer IV, V and VI, and decrease

in layer II/III) [19, 100, 101, 96, 22] (Figure 2.9).

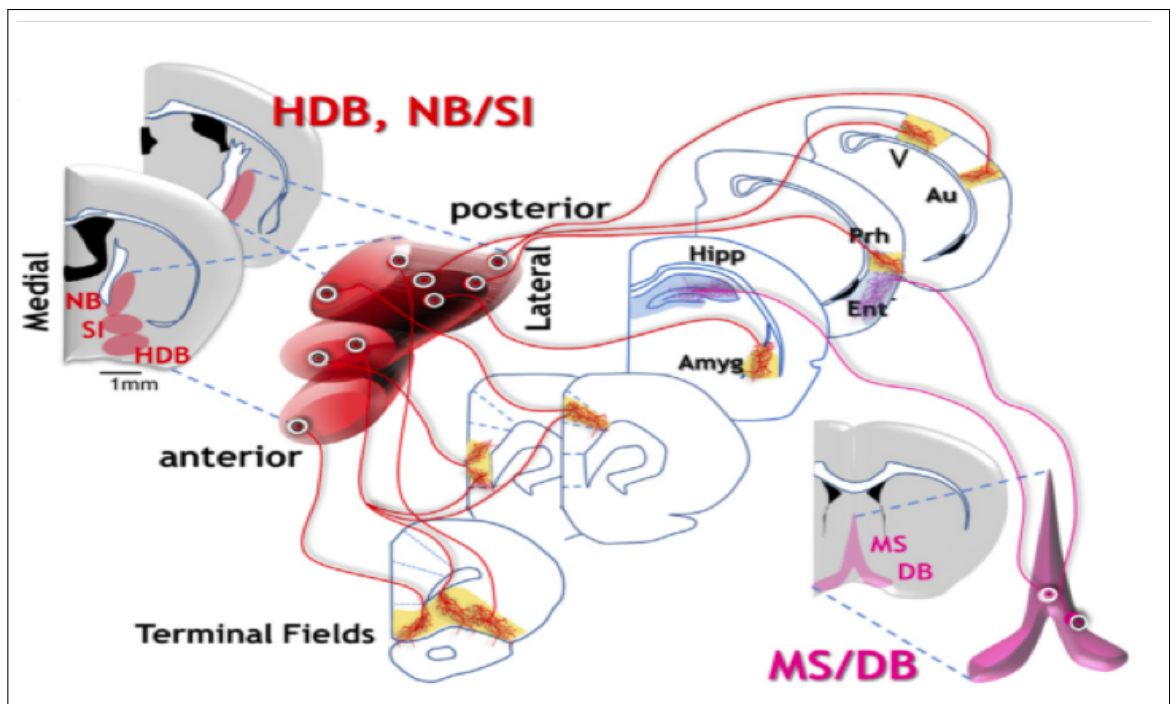


Figure 2.8 Basal forebrain nuclei [19].

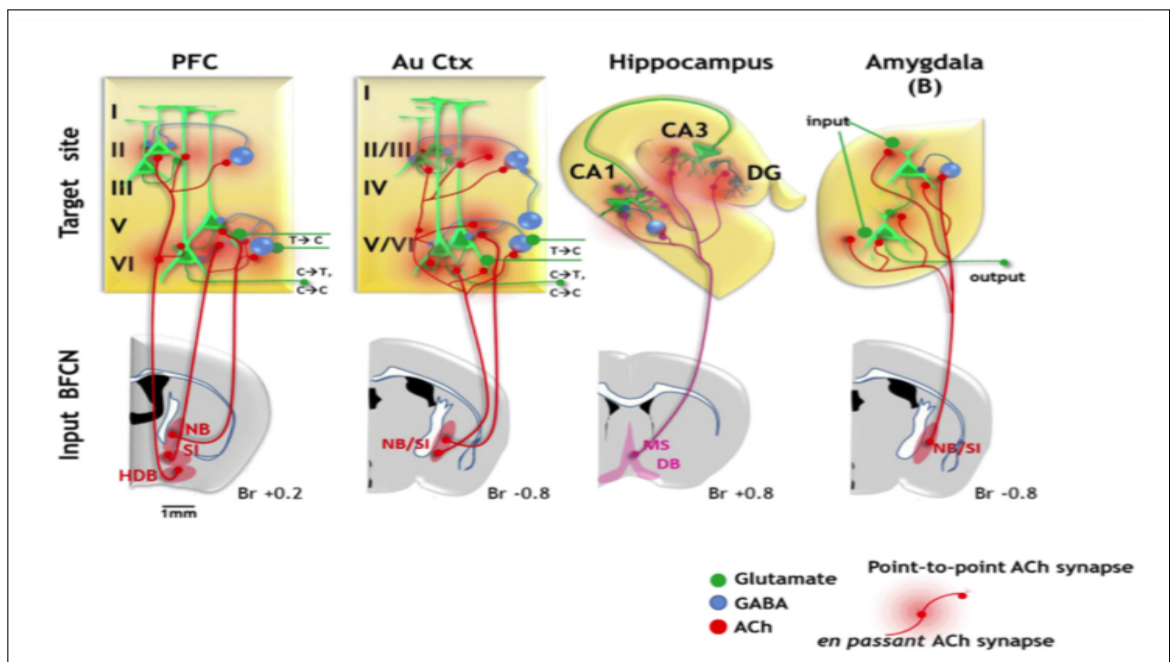


Figure 2.9 Basal forebrain[19].

Additionally, paired stimulation of basal forebrain and sensory is not enough to distinguish which acetylcholine receptor type affects neuronal excitability, signal-noise ratio, and sensory processing. In order to be aware of this discrimination, muscarinic or nicotinic antagonists should be applied [90, 93].

3. MATERIALS and METHODS

3.1 Animals and Husbandry

All experiments were approved by Boğaziçi University Institutional Local Ethics Committee for the Use of Animals in Experiments (BÜHADYEK). In this study, 4 adult female Wistar albino rats were used for Nissl staining and 20 adult Wistar albino rats (7 male and 13 female) were used for immunocytochemistry procedures. The animals were parted from another study which is neural spike responses in somatosensory cortex.

3.2 Electrophysiology

Intraperitoneally (IP) administration of ketamine (65 mg/kg) and xylazine (10 mg/kg) is used for anesthesia before the electrophysiological study of another researcher. Rectal temperature was checked and kept at 37°C by using heating pad. The general condition of the rat was checked periodically as well as the state of anesthesia by controlling palpebral and pedal reflexes. To maintain the appropriate level of anesthesia, additional 1/3 dose of injection of anesthesia was given when found necessary. The head was fixed with a stereotaxic frame and a craniotomy was performed to place stimulation electrode either in right or left hemisphere. After this step, rats were ready for BF stimulation.

Basal forebrain stereotaxic coordinates, and motor cortex coordinates which correspond to hindlimb area, and barrel field were shown in figure 3.1 and figure 3.2, respectively. For histological procedures, brain sections were cut between 0(bregma) - (-2) stereotaxic coordinates.

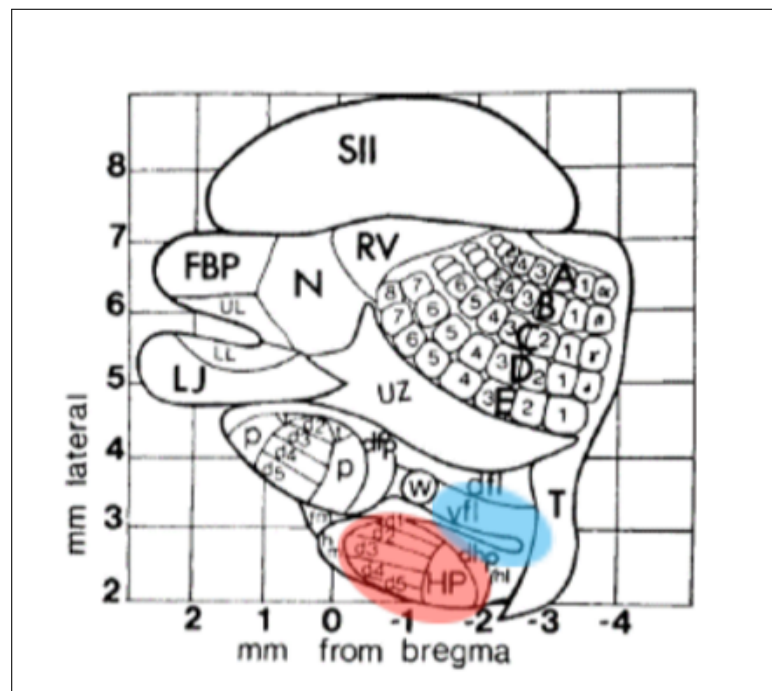


Figure 3.1 Stereotaxic coordinates, red circle shows the area representing the hindlimb area of SI cortex for recording whereas blue circle gives location of NB area for electrical stimulation of BF [104].

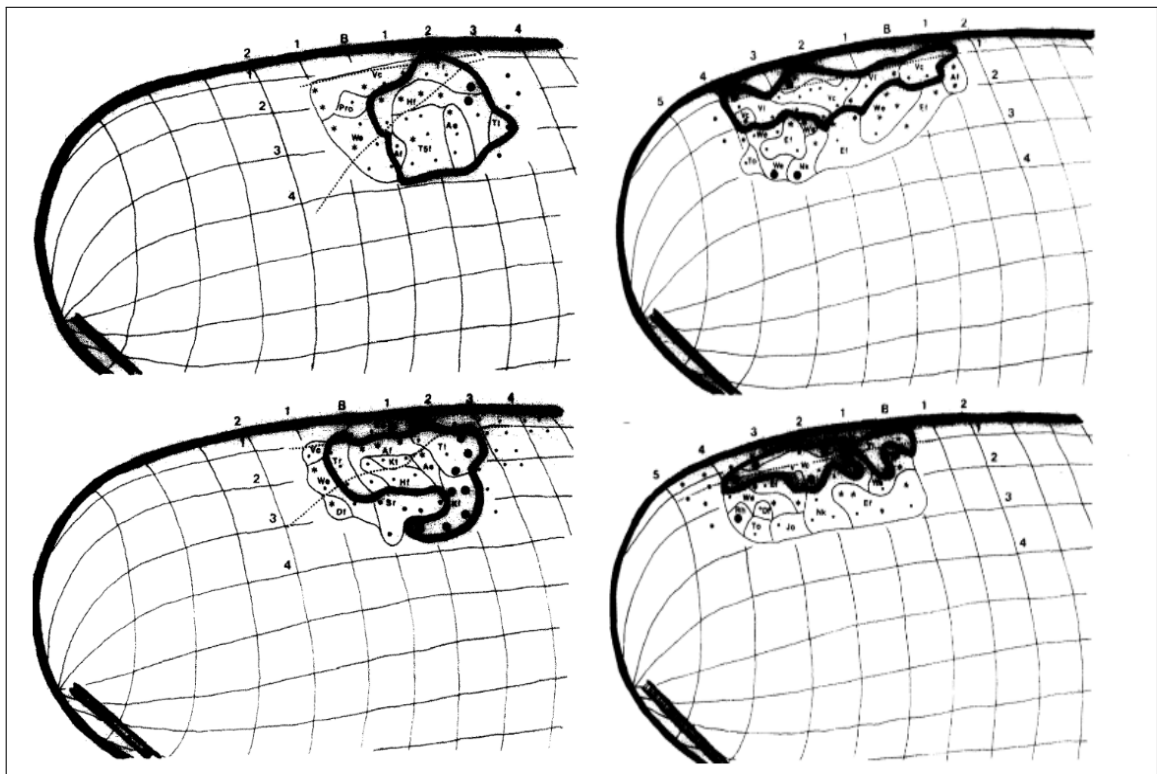


Figure 3.2 Two separate stimulation mapping experiments (right column shows barrel field representing motor cortex and left column shows hindlimb area) [105].

BF stimulation electrode was inserted into Nucleus basalis of Meynert to a depth of 8.2 mm from the cortical surface at 2.3 mm posterior to bregma and 2.9 mm lateral from the midline according to the rat brain stereotaxic coordinates in the atlas of Paxinos and Watson [104] as shown in figure 3.3. According to the hemisphere that was stimulated experimental groups were created as such control, ipsilateral and contralateral. Control group received no stimulation. Ipsilateral group received stimulation in the same hemisphere for which histological analysis was performed whereas contralateral group was stimulated in the opposite hemisphere.

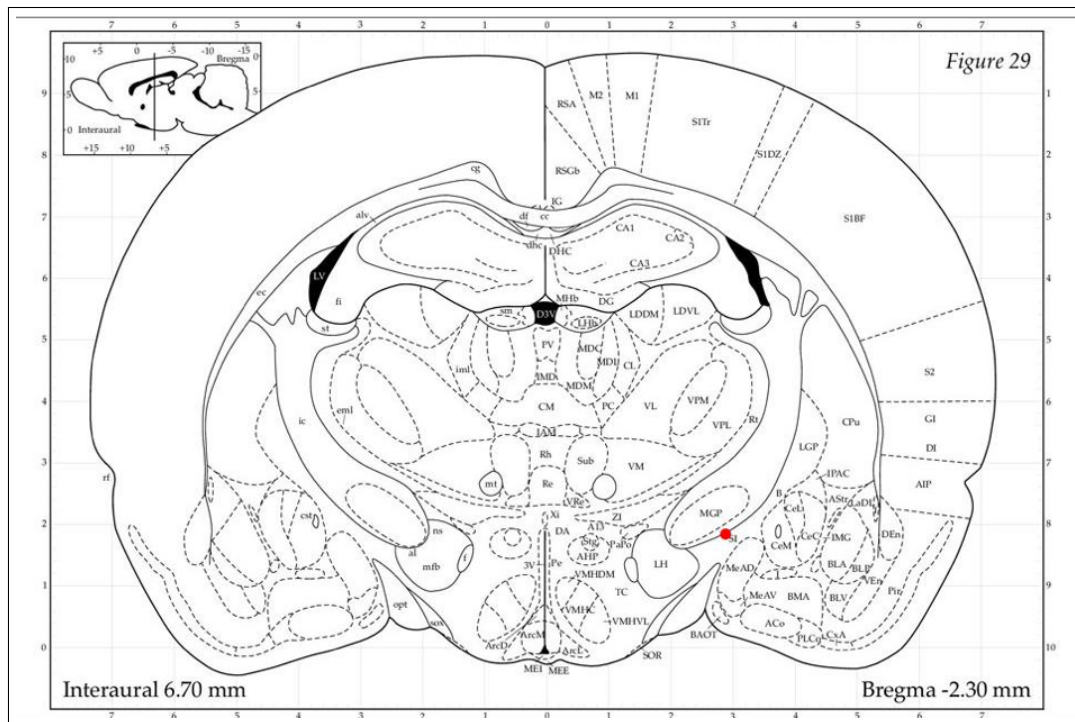


Figure 3.3 NBM neurons are located at SI region of Brain (shown as red dot) [104].

BF stimulation parameters were 12000 pulses in total, and each bipolar current pulses with amplitude 50 μ A, 50 pulses were applied at 100Hz. After BF stimulation, each rat was perfused for histological procedures.

3.3 Histological Procedures

3.3.1 Nissl Staining

In order to understand general six-layered cortex structure in the brain, Nissl staining was performed. Nissl staining is a specific method which gives a general idea about cortical organization of the brain. In order to determine the nucleic acid content of cells like Nissl substances (rRNA in rough endoplasmic reticulum) and nucleolus Nissl staining protocol was applied.

Before the Nissl staining protocol, brain sections (50 μm) were cut coronally through the anterior portion of the brain by using vibrating blade microtome (Leica VT1000S vibratome) in phosphate buffer (PB). Gelatin-coated slides that each one contains four sections were used for section mounting. These slides were transferred to stainless-steel slide racks (20 slides/rack) after leaving them at room temperature to dry for about 12-18h and then they will be stained with Cresyl Violet. In the Nissl staining protocol, the racks followed these steps: Dehydrate/demyelinate/rehydrate sections by alcohol (EtOH) series, rinsing with dH₂O staining with Cresyl Violet Acetate solution, destaining with acetic acid, dehydration again and cleaning with xylene.

3.3.2 Immunocytochemistry

Standard immunofluorescence protocol was applied to coronal sections (thickness: 50 μm). 12 sections were prepared in order to investigate the specific brain areas. 6 of them were chosen for $\alpha 4$ nACh receptor subtype and rest of them were used for $\alpha 7$ nACh receptor subtype. The 1st sections were selected for DAPI staining for both $\alpha 4$ and $\alpha 7$ nACh receptor subtypes. From 2nd-4th sections were used for immunofluorescence protocol and the average of them were used for the analysis. For secondary antibody control 5th was chosen therefore the secondary antibody was not added to sections. The 6th was chosen for primary antibody control therefore the primary antibody was not applied.

To localize $\alpha 4/\alpha 7$ nACh receptor complexes on the neurons of specified sensorimotor cortex areas, for the $\alpha 4$ nACh receptor subtype Rabbit polyclonal anti-nAChR $\alpha 4$ (sc-5591) was chosen as primary antibody and for the $\alpha 7$ nACh receptor subtype, Rabbit polyclonal anti-nAChR $\alpha 7$ (sc-5544) was chosen. As a secondary antibody, Goat anti-rabbit IgG (H+L) with Alexa Fluor 594 (ThermoFisher Scientific: A-11012) was chosen for both subtypes. Its excitation and emission wavelengths are 591 nm and 614 nm respectively (Figure 3.4).

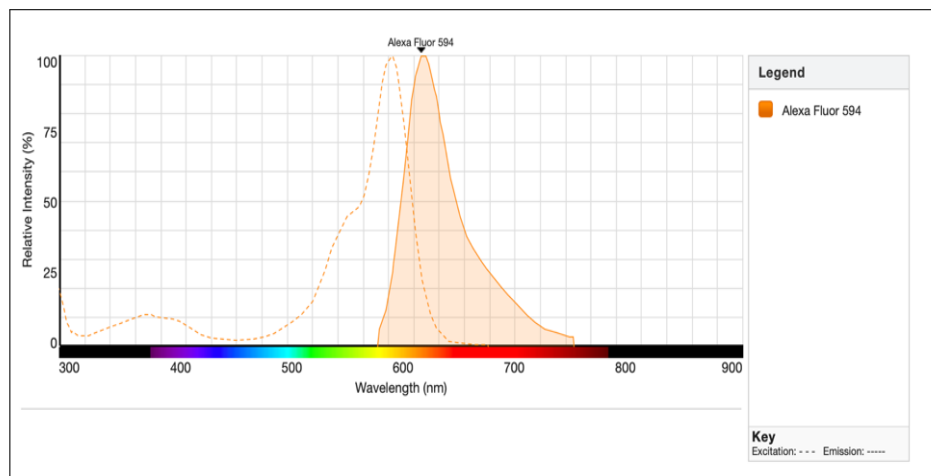


Figure 3.4 Goat anti-rabbit IgG (H+L) with Alexa Fluor 594(ThermoFisher Scientific: A-11012) excitation and emission wavelength.

In addition to primary and secondary antibody controls, we run positive control in our experiments in order to confirm that $\alpha 4$ and $\alpha 7$ antibody stainings were accurate and reliable. Positive control means sections contains the target molecule in its known location. In our experiments specificities were checked with sections from hippocampus and cerebellum regions in the rat brain. Whole hippocampal regions were immunoreactive for both $\alpha 4$ and $\alpha 7$ subtypes but the most reactive side was CA1 region [53, 49, 61]. Our positive control staining for both subtypes confirmed this specificity (For $\alpha 7$ subtype Figure 3.5 and for $\alpha 4$ subtype Figure 3.6).

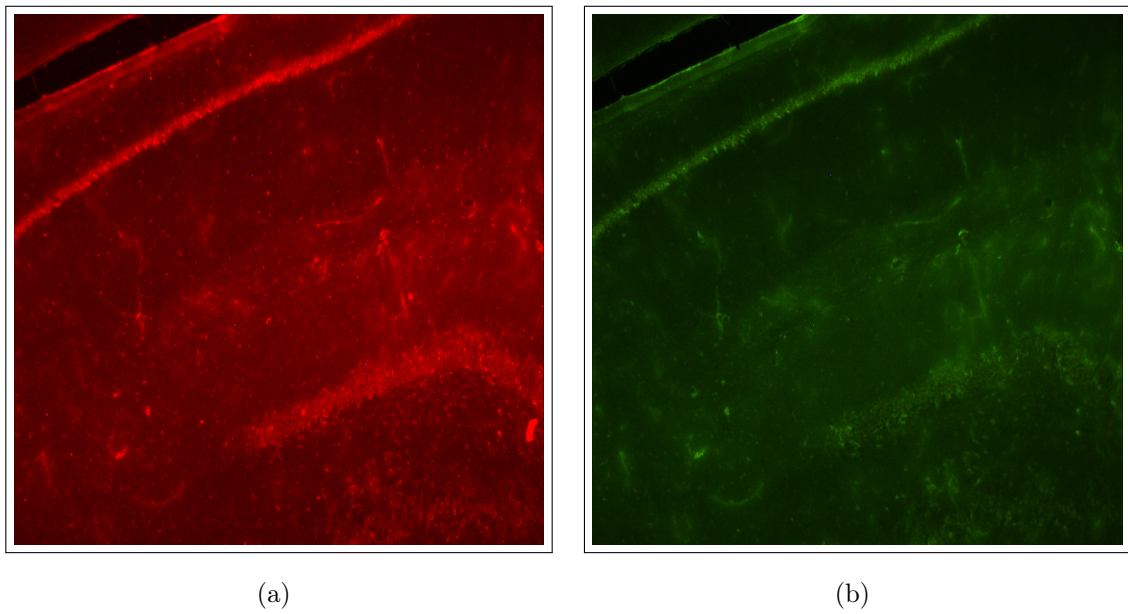


Figure 3.5 (a) $\alpha 7$ staining from CA1 region of hippocampus viewed in Leica filter cube: N2.1. (b) $\alpha 7$ staining from CA1 region of hippocampus viewed in Leica filter cube: I3.

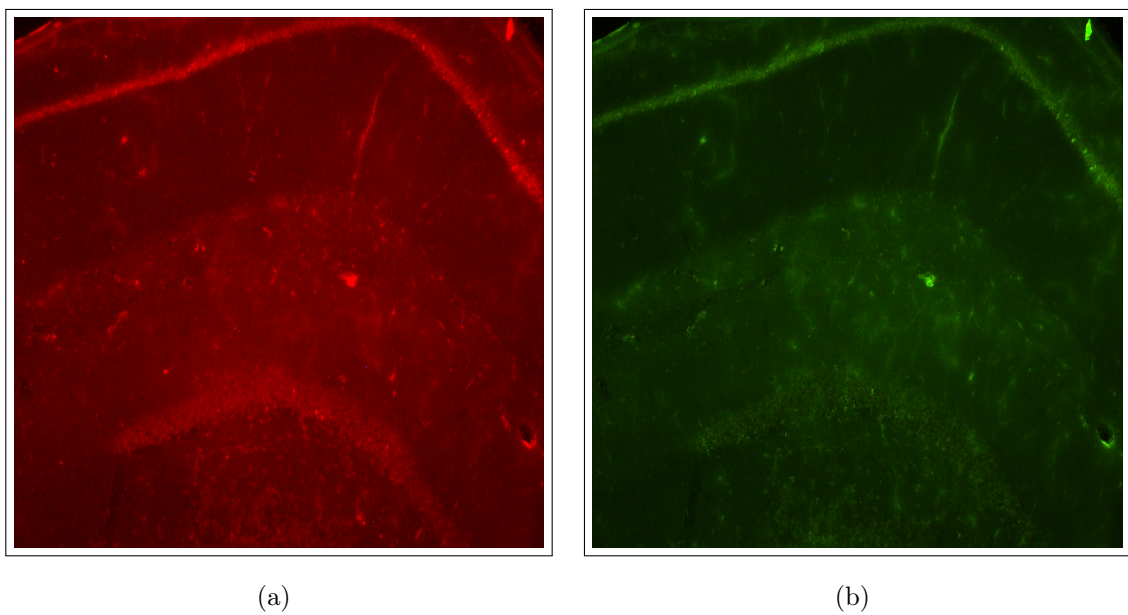


Figure 3.6 (a) $\alpha 4$ staining from CA1 region of hippocampus viewed in Leica filter cube: N2.1. (b) $\alpha 4$ staining from CA1 region of hippocampus viewed in Leica filter cube: I3.

In cerebellum, $\alpha 4$ and $\alpha 7$ subtypes showed immunoreactivity mostly in Purkinje layer. Additionally, granular layer also showed reactivity for both subtypes [106, 77, 107]. Our data confirmed these studies for both $\alpha 4$ and $\alpha 7$ specificity for Purkinje layer (For $\alpha 7$ subtype Figure 3.7 and for $\alpha 4$ subtype Figure 3.8).

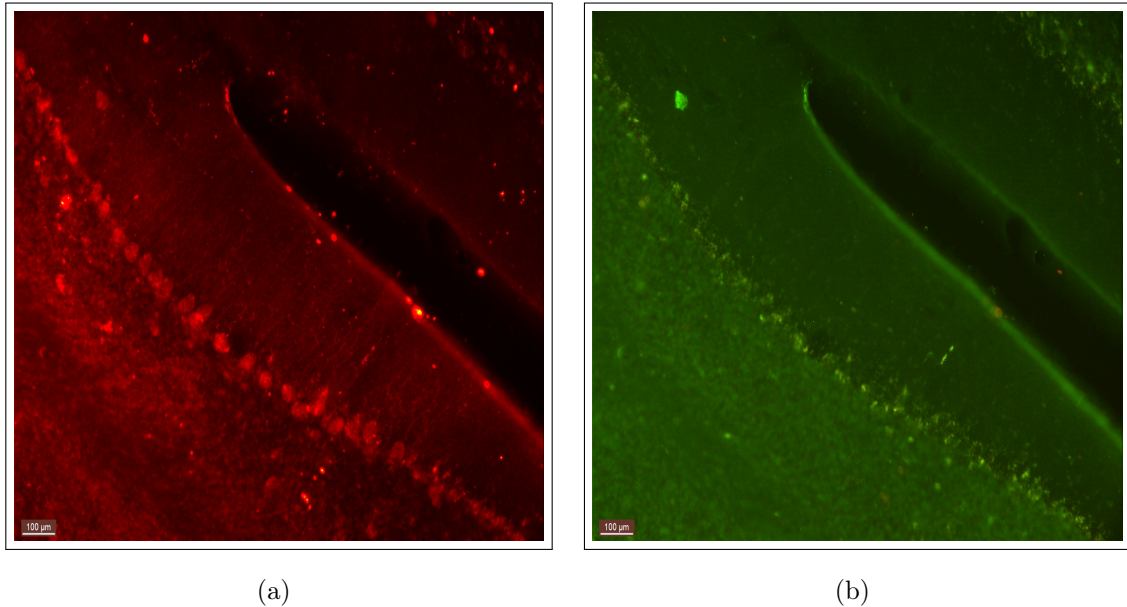


Figure 3.7 (a) $\alpha 7$ staining from cerebellum viewed in Leica filter cube: N2.1. (b) $\alpha 7$ staining from cerebellum viewed in Leica filter cube: I3.

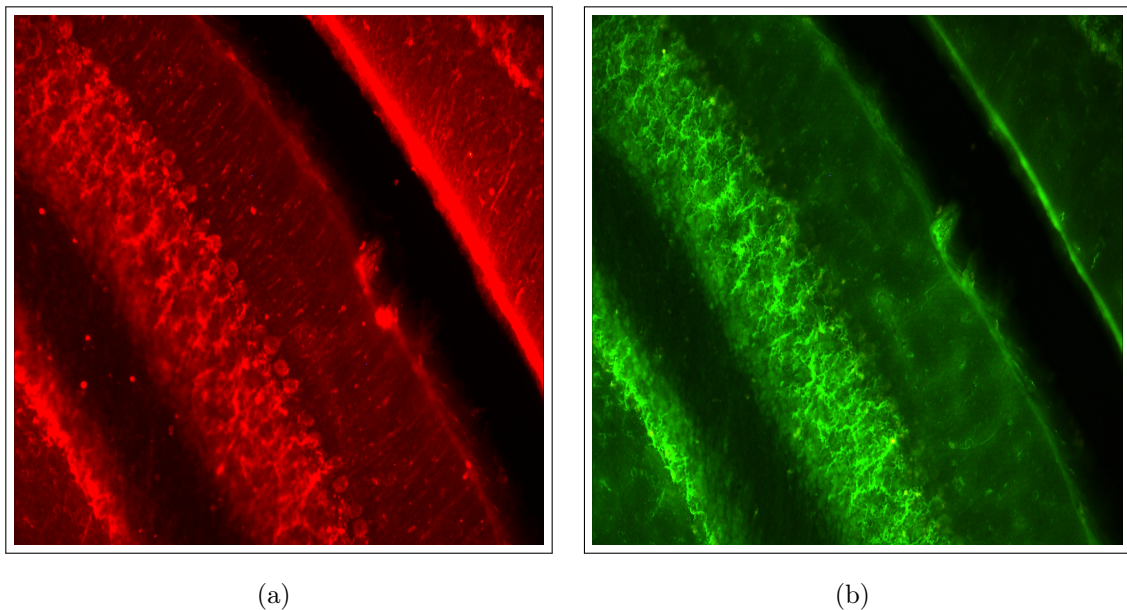


Figure 3.8 (a) $\alpha 4$ staining from cerebellum viewed in Leica filter cube: N2.1. (b) $\alpha 4$ staining from cerebellum viewed in Leica filter cube: I3.

Firstly in the post fixation step, brain was expected to sink in the neutral buffered paraformaldehyde (NBPFA)/Sucrose solution (20% sucrose in 4% paraformaldehyde). PB that contains Triton X-100 (PBTx) which is a detergent for permeabilizing the tissue membrane was used for washing the brain 6 times. Then the brain was sectioned by using vibrating blade microtome (Leica VT1000S vibratome). Sections were rinsed again with PBTx in the first row by using a multi-well container (tissue culture plate). Then the sections (from 2nd to 5th) were rinsed with PBTx with 10% normal goat serum (NGS) (PBTxg) for an hour. This step called as a blocking step. After that, 150 μ l primary antibody solution (diluted 1:50 in PBTx) was added on them and incubated with for 24-48 hours in the refrigerator at 4°C. PBTx was used for washing the sections 3 times (each 30 min). Then, 150 μ l secondary antibody solution (diluted 1:50 in PBTxg) was added on the sections for 12-24 hours in the refrigerator at 4°C in the dark. The sections were rinsed 3 times (with at least 30 min/rinse) in different rows each time that contain 1.5 mL fresh PB. 4mM sodium carbonate solution was applied in order to reduce background staining to all sections 2 times (each 15 min) as a final step. Then, gelatin-coated slides were used for the placement of the sections. As mounting medium fluoroshield (Sigma-Aldrich) was used. Slides were kept away from light and stored in the refrigerator.

3.4 Counter Staining for Immunofluorescence

Layer thicknesses and the total cell number in the primary somatosensory hind-limb (S1HL), primary somatosensory barrel field (S1BF) and primary motor cortex (M1) were determined on sections stained with DAPI dihydrochloride (Sigma D9542). DAPI is a blue fluorescent nucleic acid stain that stains double-stranded DNA structure. Binding of DAPI to DNA enhances fluorescence. The fluorescence is directly related with the amount of DNA in the cell.

It was applied to 1st section of both α 4 and α 7 nACh receptor subtypes. Its excitation and emission wavelength are 358 nm and 461 nm respectively (Figure 3.9). Thus, the cells stained with DAPI were visualized under UV light (Leica filter cube: A).

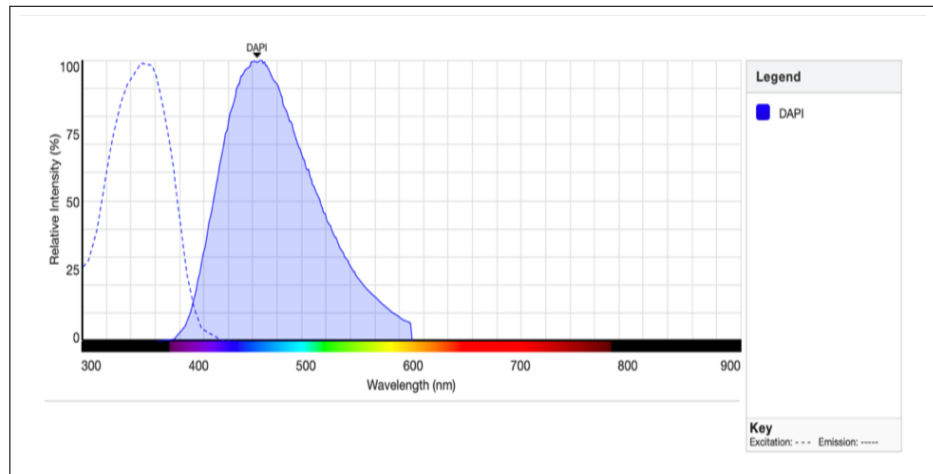


Figure 3.9 DAPI dihydrochloride (Sigma D9542) excitation and emission wavelength.

1st sections were incubated with 150 μ l DAPI solution for 1-5 minutes. Then samples were rinsed 3 times with fresh PB (15-30 min/rinse). As a mounting medium Fluoroshield (Sigma-Aldrich) was used.

3.5 Cell Counting

Boundaries of the brain regions (M1, S1HL, S1BF), were determined with a normalization procedure because of the fixation differences and variability between subjects. Normalization procedure was applied according to Paxinos & Watson atlas. Following equation was used to calculate the area boundaries. According to the Paxinos & Watson atlas, hemispheric width was calculated the average (7.4 mm) of starting point that includes three interested areas together (bregma -0.36, 7.2 mm) and end point that includes three interested areas together (bregma -2.28, 7.6 mm). Then, based on midline distance, for each area boundaries were calculated; 1.8 mm, 2.9 mm and 5.8 mm for M1, S1HL and S1BF, respectively. These calculations were used for to normalize measured subject midline distance and for each area. For instance;

For M1

Hemispheric width in atlas (7.4 mm) Midline distance in atlas for M1 (1.8 mm)
 Measured hemispheric width in subject (HW) Normalized midline distance for M1 (x)

$$x = HW * 1.8 / 7.4$$

600 μ m of the counting area was identified by drawing lines on images. Annotations and measurements were completed on the Leica LAS software. Autofluorescence in the tissues were detected by using filter cube (I3 (excitation filter BP 450-490 nm and long pass filter LP 515 nm for emission)). In order to detect immunostaining the filter N2.1 (excitation filter BP 515-560 nm and long pass filter LP 590 nm for emission) was used. The Leica software was used for all measuring and determining steps. Fiji (Ver:2.0.0-rc-69/1.52i) was used to count the receptor complexes and cells. Images were captured at 20x magnification to count receptor complexes. Digitized images were processed via changing brightness and contrast levels in order to enhance the visibility of cells and receptor complexes. Approximately twice as bright cells and receptors from the background were counted. In immunofluorescence, only cells and receptor complexes labeled with the fluorophore were marked in filter N2.1. If the cells and receptor complexes are apparent in both filter cube (N2.1 and I3) they are accepted as an autofluorescence.

3.6 Statistical Analysis

3.6.1 Nissl stained data

Based on cytoarchitecture reference, cortical layers were identified. The thicknesses of the layers of three cortical areas (M1, S1HL and S1BF) were determined in Leica software. Mean, standard error and standard deviation were calculated for each layer thickness in a given cortical area. One-way ANOVA was carried out to determine how the total cortical thickness change between the areas and two-way ANOVA was

conducted to understand the effects of factors (layer and cortical area). All statistical analysis were done by using SPSS Ver 25 (IBM Corp., Armonk, NY, USA). For any significant interactions post hoc t-tests were studied.

3.6.2 Immunostained data

The average layer thicknesses (T) from DAPI stained sections that fit with Nissl layer boundaries results were used to optimize layer thicknesses in immunostained receptor complexes counted. The number of counted $\alpha 4$ and $\alpha 7$ receptor complexes were defined as N within interested cortical layer and area. D which can be formulated as $D = N / T$, represented the density of $\alpha 4$ and $\alpha 7$ receptor complexes. $C = N / N_{tot}$ was normalized number of $\alpha 4$ and $\alpha 7$ nACh receptor complex numbers in a layer based on the total number of cells. N_{tot} is the total number of cells in a given cortical layer and area which is stained with DAPI sections. Statistical analyses were performed by repeated measures ANOVA on three dependent variables: number of labeled receptor complexes (N), density of receptor complexes (D) and number of labeled receptor complexes were normalized by number of total cells (C). Between subject factor was experimental condition (control, ipsilateral and contralateral) and within subject factors were cortical area (M1, S1HL, S1BF), nicotinic receptor subtypes ($\alpha 4$ vs $\alpha 7$) and cortical layer (I, II, III, IV, V, VI).

4. RESULTS

4.1 Nissl Stained Data

Brain sections from four Wistar Albino rats were used for measurements and the results were shown in the Table 4.1. The thickness of each layer was determined according to the average of the four measurements. Table 4.1 represent averages of subjects and standard errors. The layer boundaries were found for three brain areas M1, S1HL and S1BF (Figure 4.1). Additionally, total thicknesses were calculated.

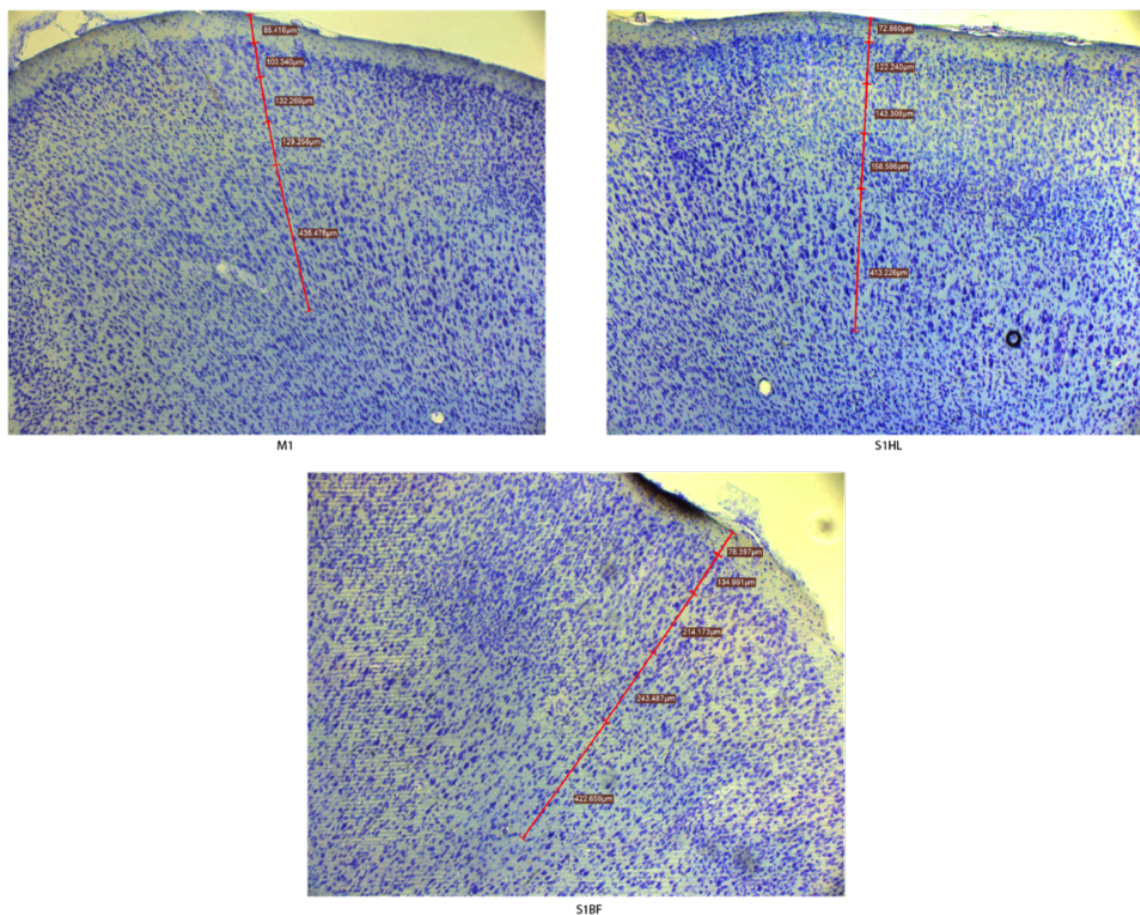


Figure 4.1 Nissl staining samples from M1, S1HL and S1BF in Neocortex, respectively.

One-way ANOVA result shows that, interested brain areas seems similar ($p=0.11$) (Figure 4.2). The total thickness of M1 is $1428.57 \pm 77.48 \mu\text{m}$, while of those in S1HL and S1BF are $1636.79 \pm 52.57 \mu\text{m}$ and $1488.23 \pm 58.15 \mu\text{m}$, respectively (Table 4.1).

Table 4.1
Layer thicknesses from three different cortical areas.

LAYER THICKNESS (μm) Mean \pm SEM	S1HL	S1BF	M1
I	$69.867 \pm \pm 7.56$	$75.46 \pm \pm 3.93$	$82.54 \pm \pm 3.45$
II	$118.88 \pm \pm 1.89$	$135.74 \pm \pm 2.58$	$107.04 \pm \pm 1.73$
III	$136.18 \pm \pm 5.81$	$181.99 \pm \pm 15.10$	$123.65 \pm \pm 2.63$
IV	$176.64 \pm \pm 1.89$	$205.35 \pm \pm 19.10$	$117.48 \pm \pm 2.84$
V	$371.13 \pm \pm 26.01$	$392.38 \pm \pm 6.38$	$431.08 \pm \pm 18.15$
VI	$555.86 \pm \pm 43.54$	$664.36 \pm \pm 29.39$	$626.42 \pm \pm 39.15$
Total cortex thickness	$1428.57 \pm \pm 77.48$	$1636.79 \pm \pm 52.57$	$1488.23 \pm \pm 58.15$

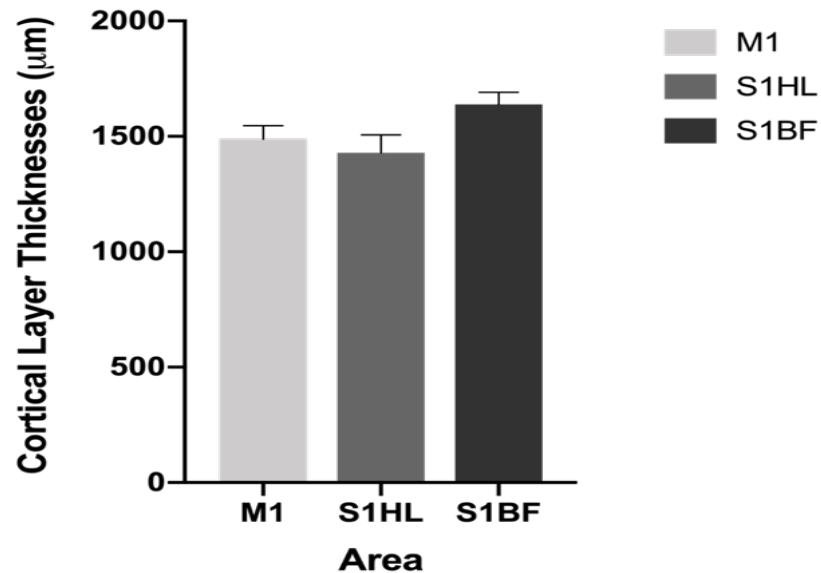


Figure 4.2 Layer thicknesses from three different cortical areas.

According to the two-way ANOVA results, layer and cortical area interaction was found significant. ($p < 0.005$). In order to show interaction between layers and cortical areas, paired post-hoc t-test was carried out on the layers. The post hoc t-test results shows that brain area had not effect on layers I, V and VI (Figure 4.3). However, the area had significant effect on layers II, III, IV ($p < 0.05$). Layers II, III and IV are thicker in S1BF when considered other two areas. On the other hand, S1HL has lower thickness in layer V when considered S1BF and M1 (Figure 4.3).

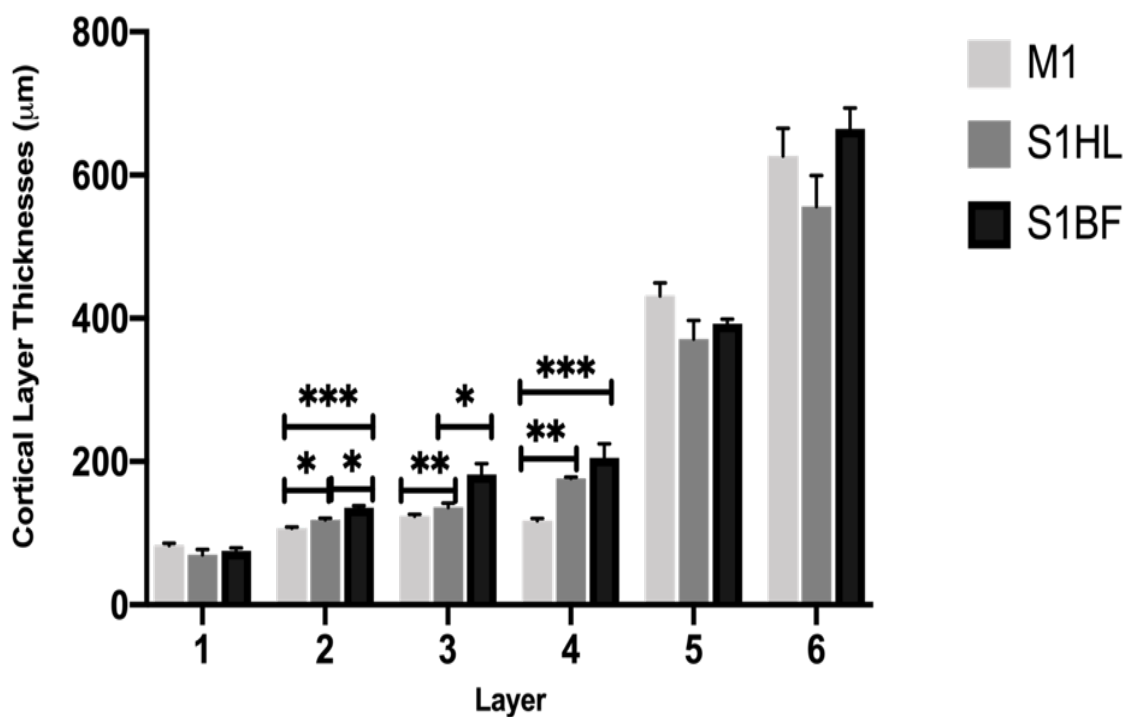


Figure 4.3 The thickness of layers in interested cortical areas (Error bars are indicated in SEM, p-values denotes * < 0.05 , ** < 0.005 and *** < 0.001).

4.2 Immunostained Data

$\alpha 4$ and $\alpha 7$ nACh receptor complexes number and total number of cells in each layer were counted. Layer boundaries were determined by DAPI staining and checked with Nissl staining results. For each area of interest (M1, S1HL and S1BF), one slides for DAPI staining and three slides for $\alpha 4$ and $\alpha 7$ nACh receptor complexes staining

were used. DAPI and $\alpha 4$ and $\alpha 7$ staining samples were shown in figures below for both (Figure 4.4 and Figure 4.5) and (Figure 4.6 and 4.7, Figure 4.8 and 4.9 respectively). Average number of $\alpha 4$ and $\alpha 7$ receptor complexes in a layer (N), density of $\alpha 4$ and $\alpha 7$ reseptor complexes with respect to layer thickness (D) and normalized $\alpha 4$ and $\alpha 7$ per total number of cells (C) are given for $\alpha 4$ in Table 4.2 and for $\alpha 7$ in Table 4.3.

Table 4.2
N, D and C values for $\alpha 4$ nAChRs.

N (#)	Layer I	Layer II	Layer III	Layer IV	Layer V	Layer VI
M1	109.02	226.25	267.75	220.10	774.83	1070.68
S1HL	115.61	271.67	339.48	372.96	675.05	1057.65
S1BF	105.29	303.58	346.90	393.58	651.58	1029.44
D ($\#/\mu$ m)	Layer I	Layer II	Layer III	Layer IV	Layer V	Layer VI
M1	1.10	1.98	2.01	1.98	1.51	1.57
S1HL	1.06	2.09	2.20	2.15	1.61	1.64
S1BF	1.27	1.93	1.82	1.93	1.73	1.62
C ($\#/\#$ tot)	Layer I	Layer II	Layer III	Layer IV	Layer V	Layer VI
M1	0.81	0.84	0.93	0.93	0.95	1.01
S1HL	0.91	0.84	0.86	0.93	0.95	0.98
S1BF	0.90	0.77	0.87	0.80	0.85	0.95

Table 4.3
N, D and C values for $\alpha 7$ nAChRs.

N (#)	Layer I	Layer II	Layer III	Layer IV	Layer V	Layer VI
M1	96.60	260.32	303.86	224.32	772.36	1056.19
S1HL	109.13	284.85	329.02	398.15	725.39	1070.98
S1BF	105.38	329.79	373.68	478.56	675.83	1059.06
D (#/ μ m)	Layer I	Layer II	Layer III	Layer IV	Layer V	Layer VI
M1	0.99	2.26	2.26	1.96	1.51	1.54
S1HL	1.00	2.23	2.16	2.23	1.71	1.68
S1BF	1.20	2.12	2.01	2.29	1.76	1.67
C (#/# tot)	Layer I	Layer II	Layer III	Layer IV	Layer V	Layer VI
M1	0.93	0.77	0.85	0.95	1.02	1.03
S1HL	0.94	0.89	0.89	0.90	0.97	0.98
S1BF	0.97	0.83	0.85	0.77	0.90	0.96

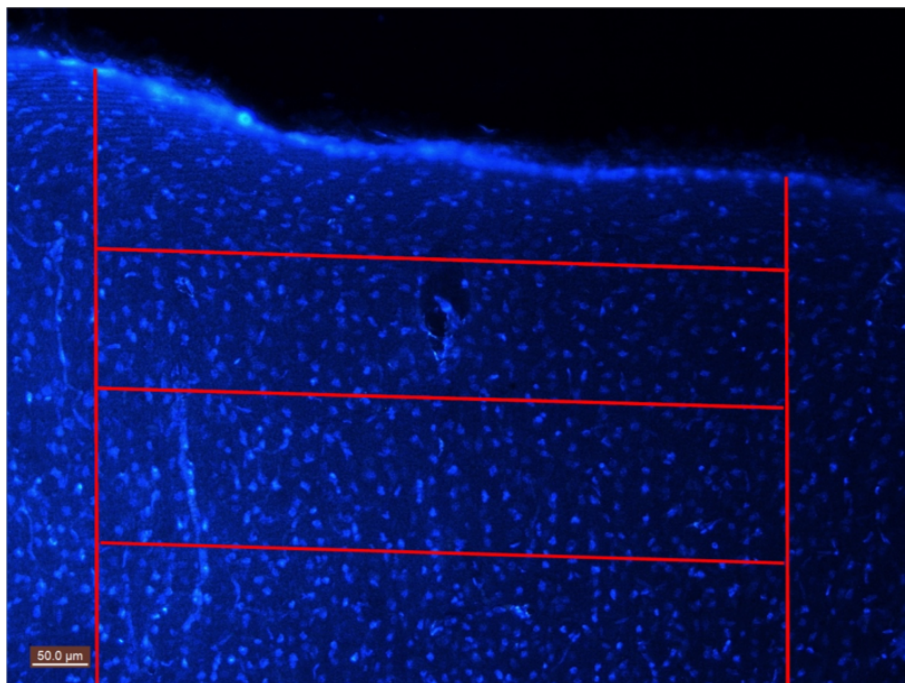


Figure 4.4 DAPI staining for counting the total number of cells in S1HL layer I-II-III. Horizontal red lines indicate layer boundaries. (Rat 21-slide 2-Magnification x20).

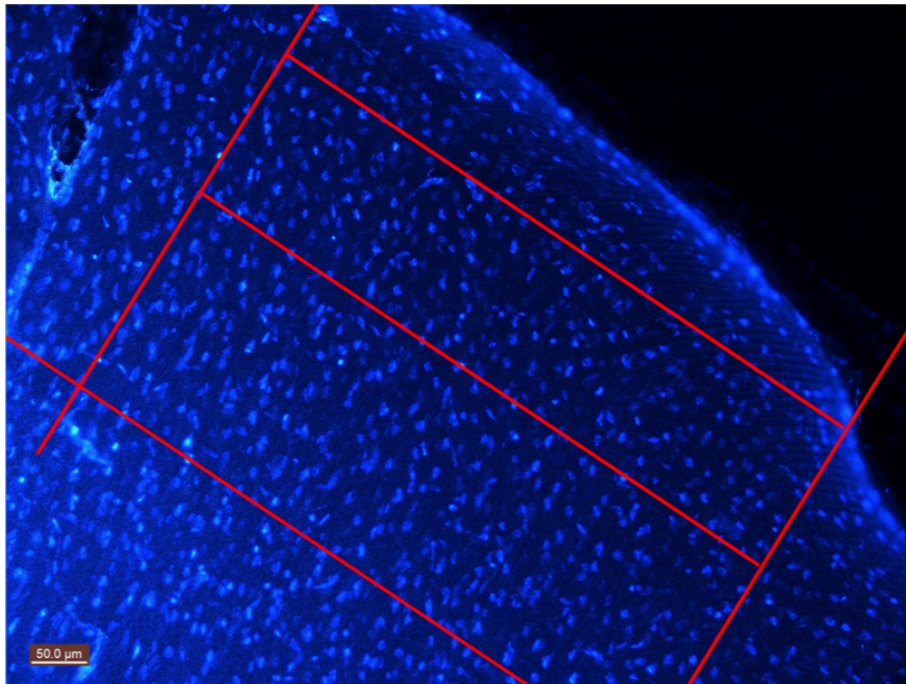


Figure 4.5 DAPI staining for counting the total number of cells in S1BF layer I-II-III. Horizontal red lines indicate layer boundaries. (Rat 21-slide 2-Magnification x20).

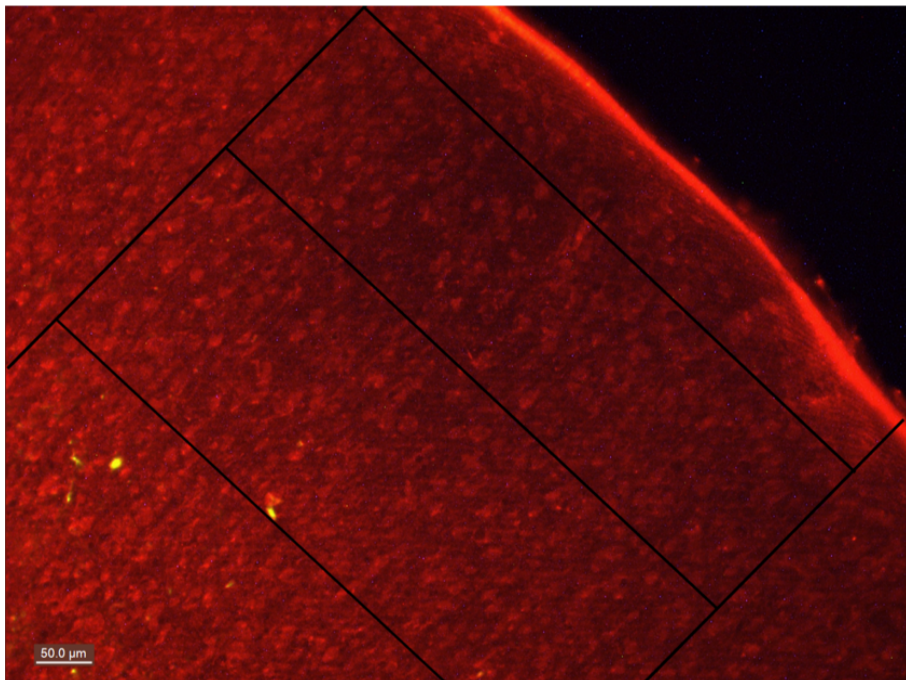


Figure 4.6 $\alpha 4$ nAChRs staining for counting the total number of receptors in S1BF layer I-II-III. Horizontal black lines indicate layer boundaries. (Rat 263-slide 2-Magnification x20).

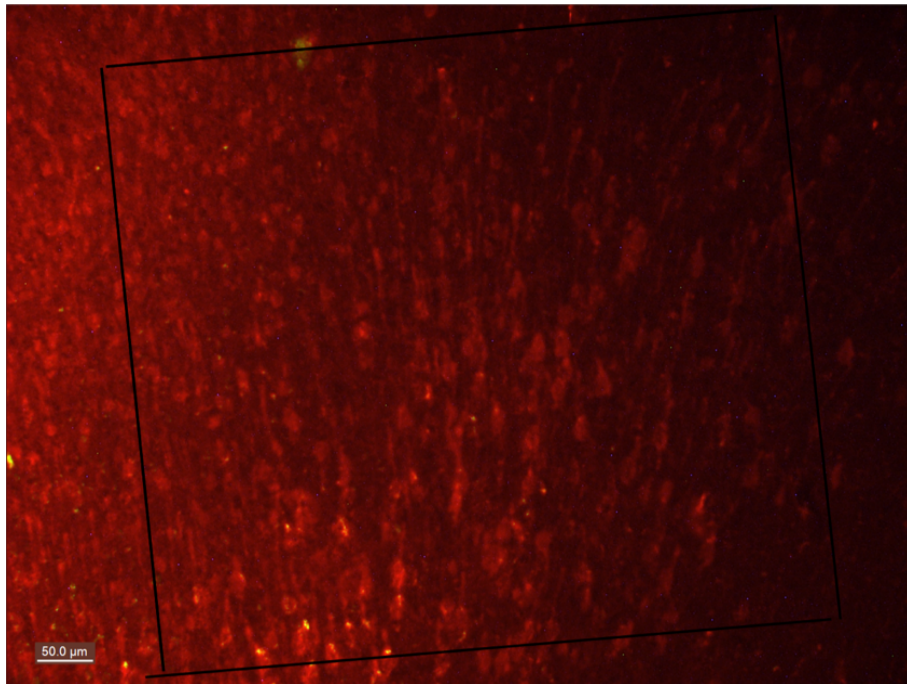


Figure 4.7 $\alpha 4$ nAChRs staining for counting the total number of receptors in M1 layer V. Horizontal black lines indicate layer boundaries. (Rat 263-slide 2-Magnification x20).

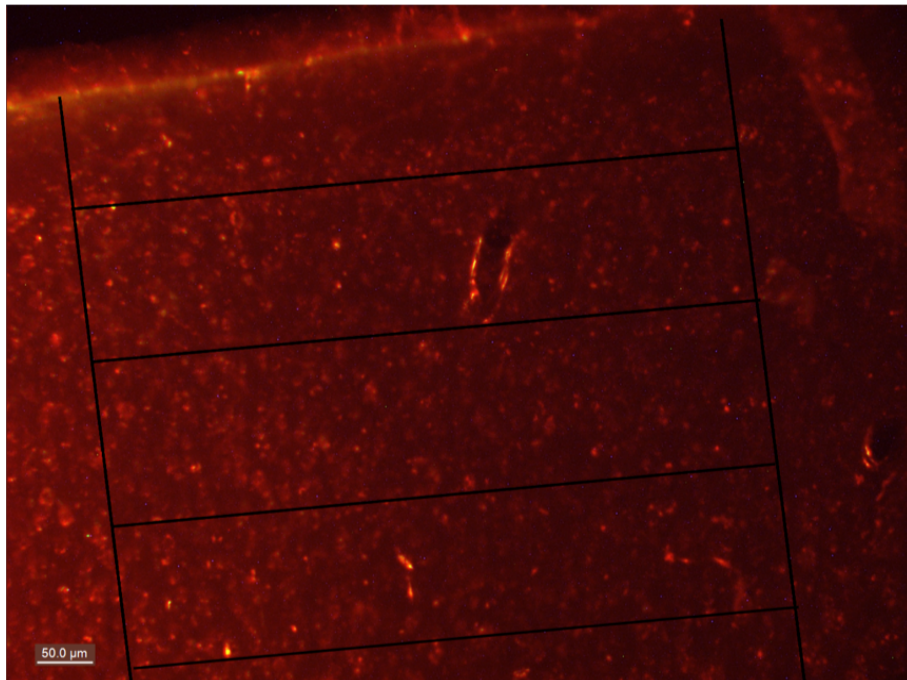


Figure 4.8 $\alpha 7$ nAChRs staining for counting the total number of receptors in S1HL layer I-II-III. Horizontal black lines indicate layer boundaries. (Rat 263-slide 2-Magnification x20).

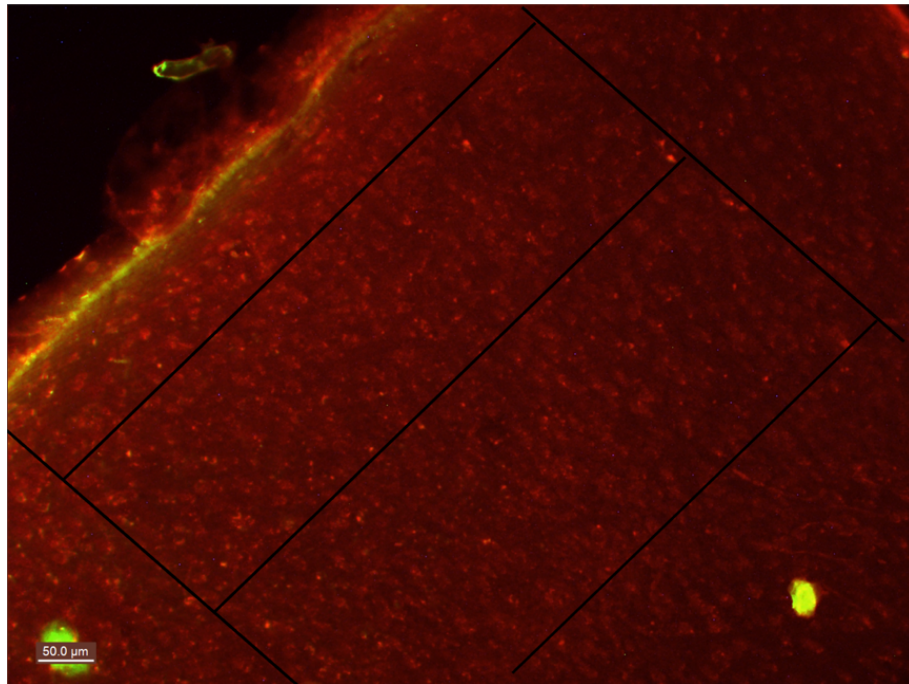
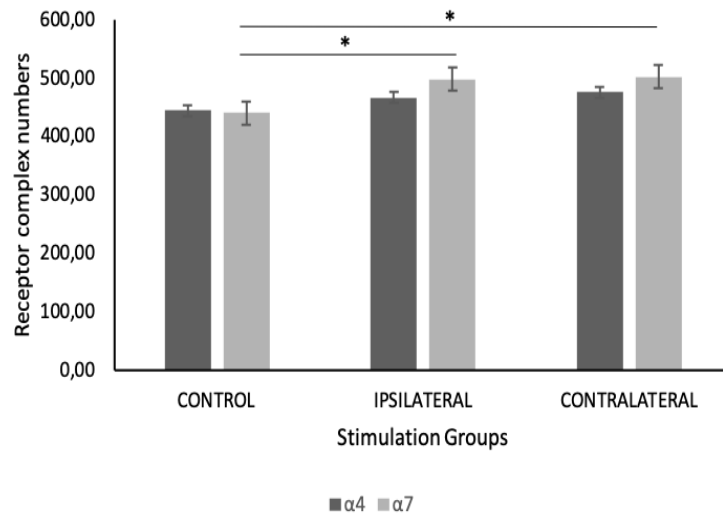


Figure 4.9 $\alpha 7$ nAChRs staining for counting the total number of receptors in S1BF layer I-II-III. Horizontal black lines indicate layer boundaries. (Rat 263-slide 2-Magnification x20).

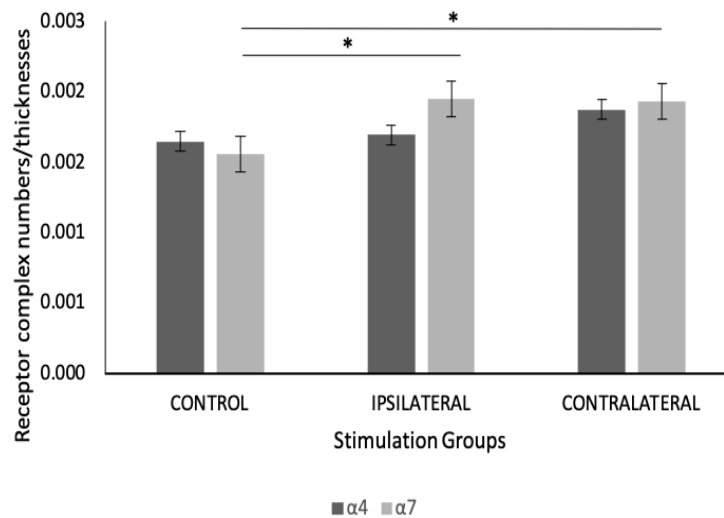
According to the repeated measures of Anova that between and within subjects were stated above, there are strong layer, area, $\alpha 4$ vs $\alpha 7$ and stimulation effects separately for both N and D ($p < 0.005$ and $p < 0.05$, respectively). Layer-stimulation interaction was found only for D ($p = 0.002$). $\alpha 4$ vs $\alpha 7$ -stimulation effect also was found for both N and D ($p = 0.028$ and $p < 0.001$, respectively). Although there is a strong interaction between area and layer for both for N and D ($p < 0.001$), area and $\alpha 4$ vs $\alpha 7$ interaction was found significant for only N ($p = 0.008$). Post-hoc tests for stimulation condition show that control group is different from ipsilateral and contralateral groups for N and D (N, $p = 0.022$ and 0.05 ; D, $p = 0.007$ and 0.008 , respectively). However, there is no difference between ipsilateral and contralateral stimulation groups for both N and D. Between the area groups, M1 is different from S1HL for N and D ($p < 0.001$ and $p = 0.002$, respectively). On the other hand, M1 is different from S1BF for N ($p < 0.001$).

In order to obtain further results about relationship between $\alpha 4$ and $\alpha 7$, $\alpha 4$ vs $\alpha 7$ was excluded from within subject factors and same statistical analyses were done for $\alpha 4$ and $\alpha 7$ separately. The main difference between two receptor subtypes is that stim-

ulation condition has a significance for only $\alpha 7$ receptor subtype. Although ipsilateral and contralateral stimulation groups seem similar, control group is different from them for both N and D ($p < 0.001$) (Figure 4.10).



(a)



(b)

Figure 4.10 (a) N and stimulation relationship for $\alpha 4$ and $\alpha 7$; (b) D and stimulation relationship for $\alpha 4$ and $\alpha 7$ (Error bars are indicated in SEM, p-values denotes * < 0.05).

Also, area differences were examined according to the stimulation groups for both $\alpha 4$ and $\alpha 7$ separately (Figure 4.11). There is a difference between M1-S1HL, and S1HL-S1BF areas for $\alpha 4$ when considered D ($p < 0.001$ and $p < 0.05$, respectively). On

the other hand, M1 is different from other areas for $\alpha 4$ when considered N ($p < 0.001$). For $\alpha 7$ receptor subtype, area differences are the same for N and D. M1 is different from other cortical areas ($p < 0.001$).

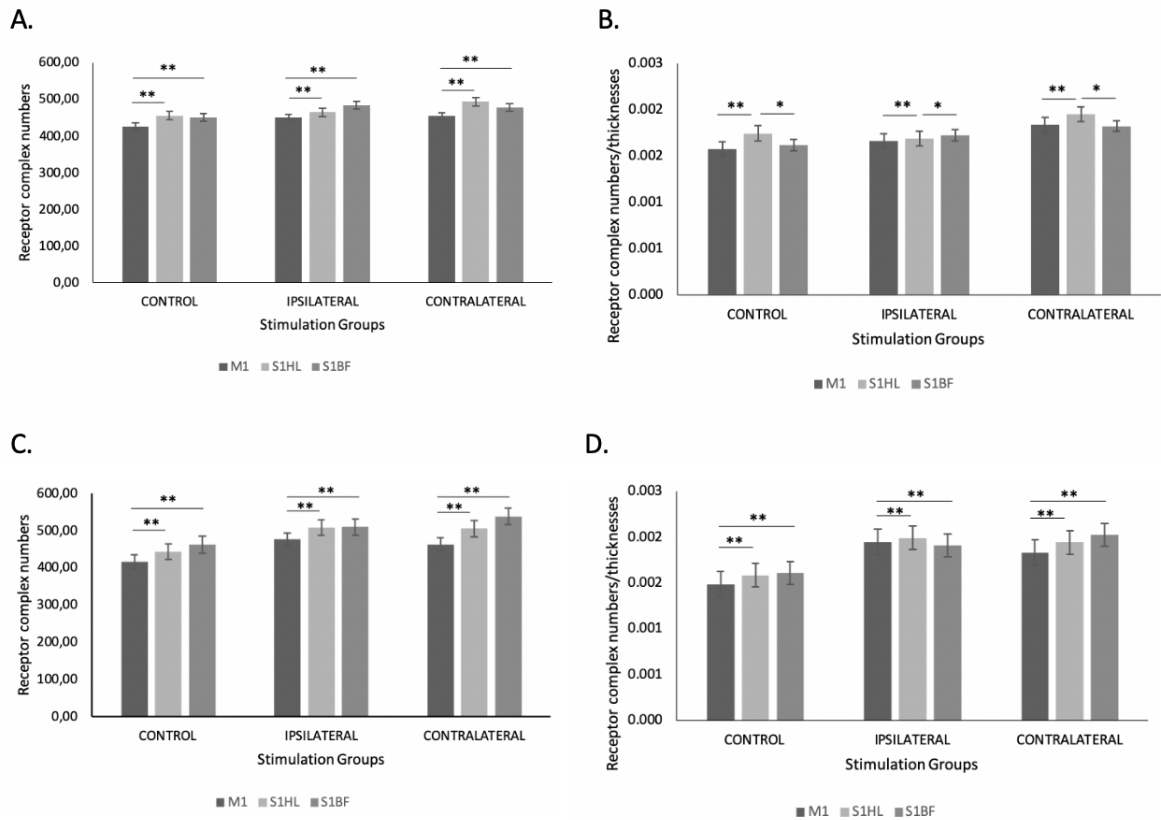


Figure 4.11 A: Stimulation relationship $\alpha 4$ for N value, B: relationship $\alpha 4$ for D value, C: Stimulation relationship $\alpha 7$ for N value, D: Stimulation relationship $\alpha 4$ for D value (Error bars are indicated in SEM, p-values denotes $* < 0.05$, $** < 0.001$).

When layer differences examined according to each interested area for N and D values, although $\alpha 4$ receptor complex numbers seem to like increase from superficial layers to deep layers for N values, after N values normalized with layer thicknesses, there are relatively linear change between layers. For $\alpha 4$ receptor subtype, layer I, V and VI are different from other layers according to N values in three different stimulation condition ($p < 0.001$). On the other hand, according to D values, layer I is different

from other layers, layer II and III are different from layer I, V and VI, and layer V is also different layer I, II, III and IV ($p < 0.001$) (Figure 4.12).

For $\alpha 7$ receptor subtype, according to the N values, each layer is different from the rest ($p < 0.001$). According to the D values, layer II, III and IV are similar but layer I, V and VI are different from the others ($p < 0.001$) (Figure 4.13).

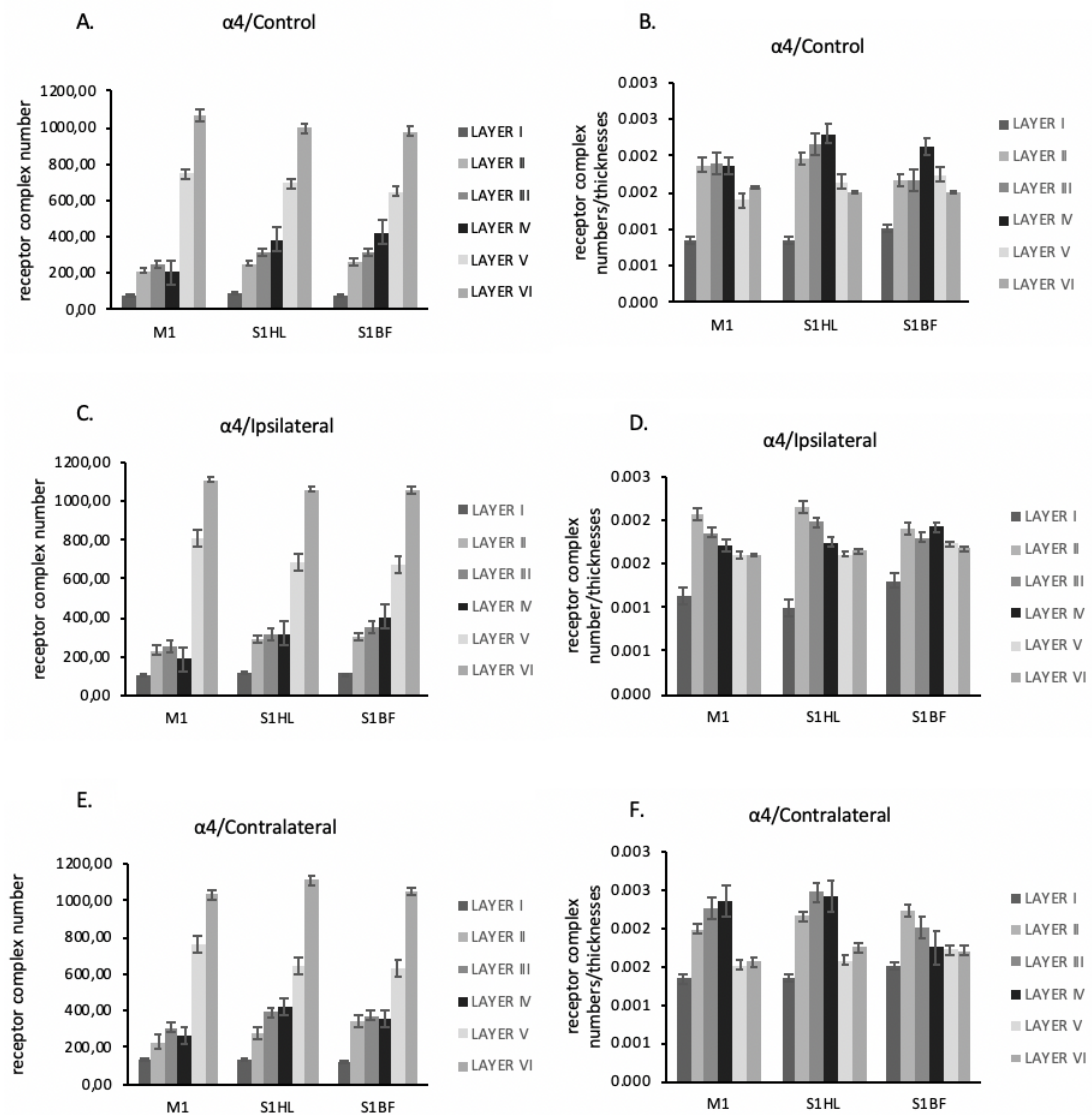


Figure 4.12 A: $\alpha 4$ Layer differences according to the N for control group, B: $\alpha 4$ Layer differences according to the D for control group, C: $\alpha 4$ Layer differences according to the N for ipsilateral group, D: $\alpha 4$ Layer differences according to the D for ipsilateral group, E: $\alpha 4$ Layer differences according to the N for contralateral group, F: $\alpha 4$ Layer differences according to the D for contralateral group.

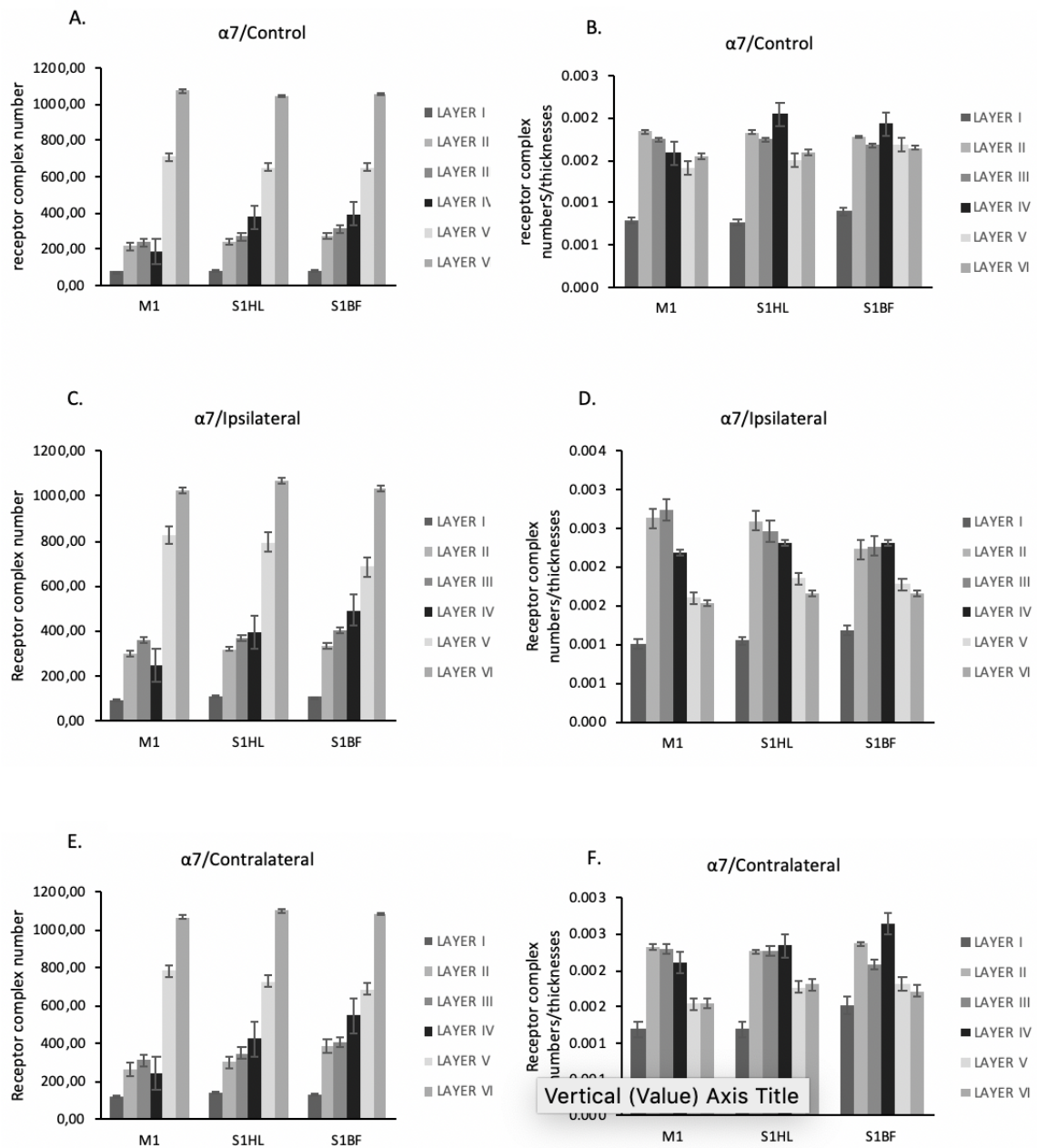


Figure 4.13 A: $\alpha 7$ Layer differences according to the N for control group, B: $\alpha 7$ Layer differences according to the D for control group, C: $\alpha 7$ Layer differences according to the N for ipsilateral group, D: $\alpha 7$ Layer differences according to the D for ipsilateral group, E: $\alpha 7$ Layer differences according to the N for contralateral group, F: $\alpha 7$ Layer differences according to the D for contralateral group.

5. DISCUSSION

5.1 General Conclusion

There are two interacting attentional mechanisms which are bottom-up and top-down and there is no profound knowledge about how these mechanisms work together. In order to understand these two mechanisms, behavioral experiments which are required attentional tasks and modulation of sensory feedbacks. However, experiments like this do not give us information about subtypes of nicotinic acetylcholine receptor expression in the sensory cortex. In the literature about attention, there is still unknown areas regarding specific cholinergic system and attentional mechanisms in the cortex.

In order to compare acetylcholine mechanisms in different S1 areas in cortex, six layered cortex structure was identified in this study. Results suggest that there are strong layer-area interactions. Layer I, V and VI do not vary depending on the areas. On the other hand, layer II, III and IV change significantly in different S1 areas. S1BF area has the thickest II, III and IV layers. On the other hand, layer V has the lowest thickness in three S1 areas.

Besides, BF's several cognitive functions, it has a massive effect on sensory processing. It controls release of ACh in sensory cortices and increases excitability of neurons and modifies selectivity. In this thesis, we showed that BF stimulation modulate responses of S1 based on layer and area differences. The results are: (i) BF stimulation affects specifically $\alpha 7$ nAChR distribution in cortical layers in S1. This differences in expression between subtypes can be resulting from different networks in the cortex. (ii) Besides layer differences, three regions of S1 are affected differently from BF stimulation. In general, the density of receptor complex M1-S1HL, and M1-S1BF are different from each other for $\alpha 4$ subtype. On the contrary, M1 is different from other cortical areas when numbers of receptor complex for $\alpha 4$ subtype are considered. For $\alpha 7$ subtype, M1 is different from other areas for both number and density of receptor complex.

5.2 Comparison with Previous Literature

Metherate et al. [45] and Sihver et al. [108] studied the localization of nAChR subtypes in the cerebral cortex. Their results showed that in primary somatosensory cortex, middle layers specifically layer III and IV were the most dense layers for $\alpha 4$. On the contrary in primary motor cortex layer III and V had high density. Our data for $\alpha 4$ subtype in control group was consistent with these results. For D value, just layer III had the higher density from other layers.

Dominguez et al. [67] and Broide et al. [63] carried out similar study for $\alpha 7$ subtype and they showed that the most dense layers were III and IV in primary somatosensory cortex. Tribollet et al. [49] and Fuchs et al. [109] showed layer IV had the highest density specifically in barrel field. Our data for $\alpha 7$ subtype in control group supported these findings for D value. For barrel field, layer IV had the highest bar in graphs and layer III and IV were the most dense layers in cortex regions.

Much attention studies focus on the BF cholinergic system because its important role of increasing bottom-up sensory input to the cortex, cortical coding, cortico-cortical connections and reliability [110, 111, 112, 113, 114, 115, 116, 93]. Many researcher groups tried to understand how BF mediates sensory inputs in different cortex areas.

Metherate and Ashe [113] studied effects of BF stimulation on thalamocortical transmission. They used intracellular and extracellular recording technique in auditory cortex, and they administered atropine sulfate in the same the after BF stimulated. Their results show that BF cholinergic neurons can alter neocortical functions. Goard and Dan [101] are tried to understand the role of BF neuromodulation in sensory perception. In order to understand the effects of nucleus basalis activation on the sensory responses of cortical neurons they recorded from visual cortex while stimulating nucleus basalis. They suggest that decorrelation between cortical neurons occurs due to the nucleus basalis stimulation. Similarly, Mercado et al. [96] examined the changes in neuronal responses in rats by the presentation of a complex sound by stimulating BF at the same time. They obtained recordings from the auditory cortex. They showed that auditory cortex was 2-5 greater responsive to complex sounds in paired stimulation rats than in native rats. Their findings show that BF stimulation can change selectivity in the auditory cortex. Based on these studies, it can be said that BF stimulation

can change cholinergic regulations in positive way. Our data for both $\alpha 4$ and $\alpha 7$ were increased in the same trend.

Chaves-Coira et al. [117] tried to answer how BF mediates the neuronal activity on both hemispheres in sensory areas. They found that the cholinergic system conducts both hemisphere in order to increase a stimulus that can be originated on either side. Additional to the previous literature, also they showed that NBM showed merely ipsilateral projections to the cortex. Therefore, they suggest that sensory cortex of pyramidal neurons mostly in layer V target contralateral sensory cortex via the corpus callosum.

5.3 Limitations

Firstly, it is known that anesthetic substances mainly suppress brain activity and bottom-up and top-down attentional mechanisms. Stimulation location that is nucleus basalis receives inputs from subcortical regions to mediate bottom-up mechanism and prefrontal cortex to mediate top-down mechanism. Top down modulated BF stimulation in this study can be affected from anesthesia. Therefore current study need to be repeated in awake animals.

Noncholinergic and some GABAergic neurons also are located in BF and project to cortex. They also have caused activation which influence anatomical results presented here. According to the literature, only 1/3 of projections of BF are cholinergic. Therefore, it is difficult to separate the cholinergic projections and other projections from BF. When the BF is stimulated, GABAergic projections may show inhibitory effect on primary somatosensory cortex.

Other issue is damage of the stimulation electrode to the cortex. The stimulation electrode should be implanted with an angle to the BF because S1 and BF are on the same line vertically. There is a possibility of damage to the related cortex areas during removal of stimulation electrode.

5.4 Future Work

More information about cholinergic system and how it is mediated is important for the treatment of diseases such as ADHD, AD. Many studies show that the decrease of the cholinergic neurons in BF cause AD.

Identifying brain structures and circuits involved in attention and how cholinergic system is mediated is not easy. In this study we found that nicotinic receptors have heterogenous distribution and specific subtypes are modulated by BF stimulation. However, in order to see more detailed view of cholinergic modulation, using specific agonist and antagonists by microinjection technique would give us more information. The application of different agents to the cortex could help to understand the properties of the specific neurons responding to each drug in each layer. This information also contributes to understand cortico-cortical and horizontal connection within specific areas.

6. LIST of PUBLICATIONS PRODUCED FROM THE THESIS

Effects of basal forebrain stimulation on the distribution of nicotinic acetylcholine receptors with $\alpha 4$ and $\alpha 7$ subunits in the somatosensory and motor cortex of rat brain, Devlet, B., B. Vardar, B. Babür, and B. Güçlü, in National Neuroscience Congress Turkey, (Trabzon, Turkey), 2019

REFERENCES

1. English, B. A., and C. K. Jones, *Chapter 14. Cholinergic Neurotransmission*, Elsevier Inc., third edit ed., 2012.
2. Everitt, B. J., and T. W. Robbins, "Central Cholinergic Systems," 1997.
3. Sarter, M., M. E. Hasselmo, J. P. Bruno, and B. Givens, "Unraveling the attentional functions of cortical cholinergic inputs: Interactions between signal-driven and cognitive modulation of signal detection," *Brain Research Reviews*, Vol. 48, no. 1, pp. 98–111, 2005.
4. Villano, I., A. Messina, A. Valenzano, F. Moscatelli, T. Esposito, V. Monda, M. Esposito, F. Precenzano, M. Carotenuto, A. Viggiano, S. Chieffi, G. Cibelli, M. Monda, and G. Messina, "Basal Forebrain Cholinergic System and Orexin Neurons: Effects on Attention," *Frontiers in Behavioral Neuroscience*, Vol. 11, no. January, pp. 1–11, 2017.
5. Sarter, M., B. Givens, and J. P. Bruno, "The cognitive neuroscience of sustained attention: Where top-down meets bottom-up," 2001.
6. Bloem, B., R. B. Poorthuis, and H. D. Mansvelder, "Cholinergic modulation of the medial prefrontal cortex: the role of nicotinic receptors in attention and regulation of neuronal activity," *Frontiers in Neural Circuits*, Vol. 8, pp. 1–16, mar 2014.
7. Mesulam, M. M., E. J. Mufson, B. H. Wainer, and A. I. Levey, "Central cholinergic pathways in the rat: An overview based on an alternative nomenclature (Ch1-Ch6)," *Neuroscience*, Vol. 10, no. 4, pp. 1185–1201, 1983.
8. Newman, E. L., K. Gupta, J. R. Climer, C. K. Monaghan, and M. E. Hasselmo, "Cholinergic modulation of cognitive processing: insights drawn from computational models," *Frontiers in Behavioral Neuroscience*, Vol. 6, no. June, pp. 1–19, 2012.
9. Paul, S., W. K. Jeon, J. L. Bizon, and J.-S. Han, "Interaction of basal forebrain cholinergic neurons with the glucocorticoid system in stress regulation and cognitive impairment.," *Frontiers in Aging Neuroscience*, Vol. 7, no. April, p. 43, 2015.
10. Sarter, M., and J. P. Bruno, "Cognitive functions of cortical acetylcholine: Toward a unifying hypothesis," *Brain Research Reviews*, Vol. 23, no. 1-2, pp. 28–46, 1997.
11. Parikh, V., M. St. Peters, R. D. Blakely, and M. Sarter, "The Presynaptic Choline Transporter Imposes Limits on Sustained Cortical Acetylcholine Release and Attention," *Journal of Neuroscience*, Vol. 33, no. 6, pp. 2326–2337, 2013.
12. Bentley, P., P. Vuilleumier, C. M. Thiel, J. Driver, and R. J. Dolan, "Cholinergic enhancement modulates neural correlates of selective attention and emotional processing," *NeuroImage*, Vol. 20, no. 1, pp. 58–70, 2003.
13. Krnjevic, K., and A. Silver, "A histochemical study of cholinergic fibres in the cerebral cortex," *Journal of Anatomy*, Vol. 99, no. 4, pp. 711–759, 1965.
14. Spence, C., "Multisensory attention and tactile information-processing," *Behavioural Brain Research*, Vol. 135, no. 1-2, pp. 57–64, 2002.
15. Sarter, J. M. M. W. D. M., "Enhancement of sustained attention performance by the nicotinic acetylcholine receptor agonist ABT-418 in intact but not basal forebrain-lesioned rats," Vol. 418, pp. 175–182, 1999.

16. Himmelheber, A. M., M. Sarter, and J. P. Bruno, "Increases in cortical acetylcholine release during sustained attention performance in rats," *Brain Res. Cogn Brain Res.*, Vol. 9, no. 3, pp. 313–325, 2000.
17. Carmichael, O., and S. Lockhart, "The Role of Diffusion Tensor Imaging in the Study of Cognitive Aging," *Brain Imaging in Behavioral Neuroscience*, no. November 2011, pp. 289–320, 2012.
18. Schall, J. D., M. Pare, and G. F. Woodman, "Comment on "Top-Down Versus Bottom-Up Control of Attention in the Prefrontal and Posterior Parietal Cortices"," *Science*, Vol. 318, no. 5847, pp. 44–44, 2007.
19. Ballinger, E. C., M. Ananth, D. A. Talmage, and L. W. Role, "Basal Forebrain Cholinergic Circuits and Signaling in Cognition and Cognitive Decline," *Neuron*, Vol. 91, no. 6, pp. 1199–1218, 2016.
20. Vecera, S. P., and S. J. Luck, "Attention," Vol. 1, 2002.
21. Klinkenberg, I., A. Sambeth, and A. Blokland, "Acetylcholine and attention," *Behavioural Brain Research*, Vol. 221, no. 2, pp. 430–442, 2011.
22. Parikh, V., and M. Sarter, "Cholinergic mediation of attention: Contributions of phasic and tonic increases in prefrontal cholinergic activity," *Annals of the New York Academy of Sciences*, Vol. 1129, pp. 225–235, 2008.
23. Dani, J. A., and D. Bertrand, "Nicotinic Acetylcholine Receptors and Nicotinic Cholinergic Mechanisms of the Central Nervous System," *Annual Review of Pharmacology and Toxicology*, Vol. 47, no. 1, pp. 699–729, 2007.
24. Picciotto, M. R., M. J. Higley, and Y. S. Mineur, "Acetylcholine as a Neuromodulator: Cholinergic Signaling Shapes Nervous System Function and Behavior," *Neuron*, Vol. 76, no. 1, pp. 116–129, 2012.
25. Passetti, F., J. W. Dalley, M. T. O'Connell, B. J. Everitt, and T. W. Robbins, "Increased acetylcholine release in the rat medial prefrontal cortex during performance of a visual attentional task," *Eur J Neurosci*, Vol. 12, no. 8, pp. 3051–3058, 2000.
26. Sarter, M., J. P. Bruno, and J. Turchi, "Modulating Cortical Acetylcholine , Attention , and Implications for Neuropsychiatric Disorders," 1885.
27. Turchi, J., and M. Sarter, "Cortical acetylcholine and processing capacity: Effects of cortical cholinergic deafferentation on crossmodal divided attention in rats," *Cognitive Brain Research*, Vol. 6, no. 2, pp. 147–158, 1997.
28. Parikh, V., R. Kozak, V. Martinez, and M. Sarter, "Prefrontal Acetylcholine Release Controls Cue Detection on Multiple Timescales," *Neuron*, 2007.
29. Thiele, A., "Muscarinic Signaling in the Brain," *Annual Review of Neuroscience*, Vol. 36, no. 1, pp. 271–294, 2013.
30. Rasmusson, D. D., "The role of acetylcholine in cortical synaptic plasticity," *Behavioural Brain Research*, Vol. 115, no. 2, pp. 205–218, 2000.
31. Sarter, M., V. Parikh, and W. M. Howe, "Phasic acetylcholine release and the volume transmission hypothesis: Time to move on," 2009.

32. Mirza, N. R., and I. P. Stolerman, "The role of nicotinic and muscarinic acetylcholine receptors in attention.," *Psychopharmacology*, Vol. 148, no. 3, pp. 243–250, 2000.
33. Herrero, J. L., M. J. Roberts, L. S. Delicato, M. A. Giesemann, P. Dayan, and A. Thiele, "Acetylcholine contributes through muscarinic receptors to attentional modulation in V1," *Nature*, Vol. 454, no. 7208, pp. 1110–1114, 2008.
34. Brown, J. H., and N. Laiken, *Chapter 15. Acetylcholine and Muscarinic Receptors*, Elsevier Inc., third edit ed., 2012.
35. Wessler, I., and C. J. Kirkpatrick, "Acetylcholine beyond neurons: the non-neuronal cholinergic system in humans," *British Journal of Pharmacology*, Vol. 154, no. 8, pp. 1558–1571, 2009.
36. Van Der Zee, E. A., and P. G. Luiten, "Muscarinic acetylcholine receptors in the hippocampus, neocortex and amygdala: A review of immunocytochemical localization in relation to learning and memory," *Progress in Neurobiology*, Vol. 58, no. 5, pp. 409–471, 1999.
37. Gangaraju Vamsi K. Lin Haifan, "Nicotinic and muscarinic reduction of unitary excitatory postsynaptic potentials in sensory cortex; dual intracellular recording in vitro.," *Nat Rev Mol Cell Biol.*, Vol. 95, no. 1, pp. 2155–2166, 2006.
38. Levin, E. D., J. E. Rose, S. R. McGurk, and L. L. Butcher, "Characterization of the cognitive effects of combined muscarinic and nicotinic blockade," *Behavioral and Neural Biology*, Vol. 53, no. 1, pp. 103–112, 1990.
39. Brown, D. A., "Muscarinic acetylcholine receptors (mAChRs) in the nervous system: Some functions and mechanisms," *Journal of Molecular Neuroscience*, Vol. 41, no. 3, pp. 340–346, 2010.
40. AI, L., K. CA, S. WF, P. DL, and B. MR, "Identification and localization of muscarinic acetylcholine receptor proteins in brain with subtype-specific antibodies," *J Neurosci*, Vol. 11, no. October, pp. 3218–3226, 1991.
41. Weiner, D. M., a. I. Levey, and M. R. Brann, "Expression of muscarinic acetylcholine and dopamine receptor mRNAs in rat basal ganglia.," *Proceedings of the National Academy of Sciences of the United States of America*, Vol. 87, no. 18, pp. 7050–7054, 1990.
42. Spencer, D. G., E. Horváth, and J. Traber, "Direct autoradiographic determination of M1 and M2 muscarinic acetylcholine receptor distribution in the rat brain: Relation to cholinergic nuclei and projections," *Brain Research*, Vol. 380, no. 1, pp. 59–68, 1986.
43. Tayebati, S. K., D. Vitali, S. Scordella, and F. Amenta, "Muscarinic cholinergic receptors subtypes in rat cerebellar cortex: light microscope autoradiography of age-related changes.," *Brain Research*, Vol. 889, no. 1-2, pp. 256–259, 2001.
44. Pistillo, F., F. Clementi, M. Zoli, and C. Gotti, "Nicotinic, glutamatergic and dopaminergic synaptic transmission and plasticity in the mesocorticolimbic system: Focus on nicotine effects," *Progress in Neurobiology*, Vol. 124, pp. 1–27, 2015.
45. Metherate, R., "Nicotinic Acetylcholine Receptors in Sensory Cortex," *Learning & Memory*, Vol. 11, pp. 50–59, 2004.

46. Gotti, C., F. Clementi, A. Fornari, A. Gaimarri, S. Guiducci, I. Manfredi, M. Moretti, P. Pedrazzi, L. Pucci, and M. Zoli, "Structural and functional diversity of native brain neuronal nicotinic receptors," *Biochemical Pharmacology*, Vol. 78, no. 7, pp. 703–711, 2009.
47. Gotti, C., M. Zoli, and F. Clementi, "Brain nicotinic acetylcholine receptors: native subtypes and their relevance," *Trends in Pharmacological Sciences*, Vol. 27, pp. 482–491, sep 2006.
48. Severance, E. G., and J. Cuevas, "Distribution and synaptic localization of nicotinic acetylcholine receptors containing a novel alpha7 subunit isoform in embryonic rat cortical neurons.," *Neuroscience Letters*, Vol. 372, no. 1-2, pp. 104–9, 2004.
49. Tribollet, E., D. Bertrand, A. Marguerat, and M. Raggénbass, "Comparative distribution of nicotinic receptor subtypes during development, adulthood and aging: An autoradiographic study in the rat brain," *Neuroscience*, Vol. 124, no. 2, pp. 405–420, 2004.
50. Nakayama, H., S. Shioda, S. Nakajo, S. Ueno, T. Nakashima, and Y. Nakai, "Immunocytochemical localization of nicotinic acetylcholine receptor in the rat cerebellar cortex.," *Neuroscience Research*, Vol. 29, no. 3, pp. 233–239, 1997.
51. Oddo, S., and F. M. LaFerla, "The role of nicotinic acetylcholine receptors in Alzheimer's disease," *Journal of Physiology Paris*, Vol. 99, no. 2-3, pp. 172–179, 2006.
52. Nakayama, H., S. Shioda, H. Okuda, T. Nakashima, and Y. Nakai, "Immunocytochemical localization of nicotinic acetylcholine receptor in rat cerebral cortex," *Molecular Brain Research*, 1995.
53. Hurst, R., H. Rollema, and D. Bertrand, "Nicotinic acetylcholine receptors: From basic science to therapeutics," *Pharmacology and Therapeutics*, Vol. 137, no. 1, pp. 22–54, 2013.
54. Kabbani, N., and R. A. Nichols, "Beyond the Channel: Metabotropic Signaling by Nicotinic Receptors," *Trends in Pharmacological Sciences*, Vol. 39, no. 4, pp. 354–366, 2018.
55. Oldford, E., and M. A. Castro-Alamancos, "Input-specific effects of acetylcholine on sensory and intracortical evoked responses in the "barrel cortex" in vivo," *Neuroscience*, Vol. 117, no. 3, pp. 769–778, 2003.
56. MacDermott, A. B., L. W. Role, and S. A. Siegelbaum, "Presynaptic Iontropic Receptors and the Control of Transmitter Release," *Annual Review of Neuroscience*, Vol. 22, no. 1, pp. 443–485, 1999.
57. Vidal, C., "Nicotinic receptors in the brain. Molecular biology, function, and therapeutics.," *Molecular and Chemical Neuropathology*, Vol. 28, no. 1-3, pp. 3–11, 1996.
58. Chatzidaki, A., and N. S. Millar, "Allosteric modulation of nicotinic acetylcholine receptors," *Biochemical Pharmacology*, Vol. 97, no. 4, pp. 408–417, 2015.
59. Lebbe, E. K. M., S. Peigneur, I. Wijesekara, and J. Tytgat, *Conotoxins Targeting Nicotinic Acetylcholine Receptors: An Overview*, 2014.
60. Zoli, M., F. Pistillo, and C. Gotti, "Diversity of native nicotinic receptor subtypes in mammalian brain," *Neuropharmacology*, Vol. 96, pp. 302–311, sep 2015.

61. Zhang, X., C. Liu, H. Miao, Z.-h. Gong, and A. Nordberg, "Postnatal changes of nicotinic acetylcholine receptor 2, α 3, α 4, α 7 and β 2 subunits genes expression in rat brain," *International Journal of Developmental Neuroscience*, Vol. 16, no. 6, pp. 507–518, 1998.
62. Corringer, P. J., F. Poitevin, M. S. Prevost, L. Sauguet, M. Delarue, and J. P. Changeux, "Structure and pharmacology of pentameric receptor channels: From bacteria to brain," *Structure*, Vol. 20, no. 6, pp. 941–956, 2012.
63. Broide, R. S., and F. M. Leslie, "The Nicotinic Acetylcholine Receptor in Neuronal Plasticity," Vol. 20, no. 1, pp. 1–16, 1999.
64. Dani, J. A., "Overview of nicotinic receptors and their roles in the central nervous system," *Biological Psychiatry*, Vol. 49, no. 3, pp. 166–174, 2001.
65. Wu, J., and R. J. Lukas, "Naturally-expressed nicotinic acetylcholine receptor subtypes," *Biochemical Pharmacology*, Vol. 82, no. 8, pp. 800–807, 2011.
66. Christophe, E., A. Roebuck, J. F. Staiger, D. J. Lavery, E. Audinat, A. J. Lee, G. Wang, X. Jiang, S. M. Johnson, E. T. Hoang, R. L. Stornetta, M. P. Beenhakker, Y. Shen, J. J. Zhu, A. Brombas, L. N. Fletcher, and S. R. Williams, "Two Types of Nicotinic Receptors Mediate an Excitation of Neocortical Layer I Interneurons Two Types of Nicotinic Receptors Mediate an Excitation of Neocortical Layer I Interneurons," *Neurophysiology*, Vol. 88, pp. 1318–1327, 2002.
67. Dominguez, E., D. E. L. Toro, J. M. Juiz, X. Peng, J. O. N. Lindstrom, M. Criado, D. N. E. D. D. T, J. M. J. Histology, and I. De, "Immunocytochemical Localization of the α 7 Subunit of the Nicotinic Acetylcholine Receptor in the Rat Central Nervous System," *The Journal of Comparative Neurology*, Vol. 349, pp. 325–342, 1994.
68. Sargent, P. B., "The Diversity of Neuronal Nicotinic Acetylcholine Receptors," *Neuroscience*, pp. 6–51, 1993.
69. Kimura, F., "Cholinergic modulation of cortical function: A hypothetical role in shifting the dynamics in cortical network," *Neuroscience Research*, Vol. 38, no. 1, pp. 19–26, 2000.
70. Role, L. W., and D. K. Berg, "Nicotinic receptors in the development and modulation of CNS synapses," *Neuron*, Vol. 16, no. 6, pp. 1077–1085, 1996.
71. Berg, D. K., and W. G. Conroy, "Nicotinic α 7 receptors: Synaptic options and downstream signaling in neurons," *Journal of Neurobiology*, Vol. 53, no. 4, pp. 512–523, 2002.
72. Arroyo, S., C. Bennett, and S. Hestrin, "Nicotinic modulation of cortical circuits," *Frontiers in Neural Circuits*, Vol. 8, no. March, pp. 1–6, 2014.
73. De Sarno, P., and E. Giacobini, "Modulation of acetylcholine release by nicotinic receptors in the rat brain," *J.Neurosci.Res.*, Vol. 22, no. 0360-4012, pp. 194–200, 1989.
74. Karlin, A., *Nicotinic Acetylcholine Receptors*, Vol. Volume 1, Elsevier Inc., second edi ed., 2010.
75. Séguéla, P., J. Wadiche, K. Dineley-Miller, J. a. Dani, and J. W. Patrick, "Molecular cloning, functional properties, and distribution of rat brain alpha 7: a nicotinic cation channel highly permeable to calcium.," *The Journal of Neuroscience : The Official Journal of The Society for Neuroscience*, Vol. 13, no. 2, pp. 596–604, 1993.

76. Taylor, P., “Nicotinic Receptors,” in *Primer on the Autonomic Nervous System*, pp. 79–82, Elsevier, 2012.
77. Gotti, C., and F. Clementi, “Neuronal nicotinic receptors: from structure to pathology,” *Progress in neurobiology*, 2004.
78. Guillem, K., B. Bloem, Poorthuis, M. Loos, A. B. Smit, U. Maskos, S. Spijker, and H. D. Mansvelter, “Nicotinic Acetylcholine Receptor,” *Science*, Vol. 333, no. August, pp. 888–892, 2011.
79. Lui, J. H., D. V. Hansen, and A. R. Kriegstein, “Development and evolution of the human neocortex,” 2011.
80. Watson, C., M. Kirkcaldie, and G. Paxinos, “The development of the brain and spinal cord,” *The Brain*, pp. 141–152, 2010.
81. Hawkins, J., S. Ahmad, and Y. Cui, “A Theory of How Columns in the Neocortex Enable Learning the Structure of the World,” *Frontiers in Neural Circuits*, Vol. 11, no. October, pp. 1–18, 2017.
82. Horton, J. G., and D. L. Adams, “The cortical column: A structure without a function,” *Philosophical Transactions of the Royal Society B: Biological Sciences*, Vol. 360, no. 1456, pp. 837–862, 2005.
83. Grow, W. A., *The Cerebral Cortex*, Elsevier Inc., 2017.
84. Kandel, E. R., J. H. Schwartz, T. M. Jessell, S. A. Siegelbaum, and A. J. Hudspeth, “Principles of Neural Science, Fifth Edition.pdf,” 2013.
85. Nieuwenhuys, R., “The Neocortex,” *Anatomy and Embryology*, Vol. 1, pp. 307–337, 1994.
86. Creutzfeldt, O. D., “Generality of the functional structure of the neocortex,” *Naturwissenschaften*, Vol. 64, no. 10, pp. 507–517, 1977.
87. Molnár, Z., “Cortical Columns,” *Neural Circuit Development and Function in the Healthy and Diseased Brain*, Vol. 3, pp. 109–129, 2013.
88. Avery, M. C., N. Dutt, and J. L. Krichmar, “Mechanisms underlying the basal forebrain enhancement of top-down and bottom-up attention,” *European Journal of Neuroscience*, Vol. 39, no. 5, pp. 852–865, 2014.
89. Kondo, H., and L. Zaborszky, “Topographic organization of the basal forebrain projections to the perirhinal, postrhinal, and entorhinal cortex in rats,” *Journal of Comparative Neurology*, Vol. 524, no. 12, pp. 2503–2515, 2016.
90. Penschuck, S., C. H. Chen-Bee, N. Prakash, and R. D. Frostig, “In vivo modulation of a cortical functional sensory representation shortly after topical cholinergic agent application,” *Journal of Comparative Neurology*, Vol. 452, no. 1, pp. 38–50, 2002.
91. Rosa, E., and M. G. Baxter, “Basal Forebrain,” Vol. 4, pp. 1–7, 1983.
92. Zaborszky, L., and A. Duque, “Local synaptic connections of basal forebrain neurons,” *Behavioural Brain Research*, Vol. 115, no. 2, pp. 143–158, 2000.
93. Zaborszky, L., A. N. van den Pol, and E. Gyengesi, *The Basal Forebrain Cholinergic Projection System in Mice*, 2012.

94. D t ri, L., "Tonic and phasic influence of basal forebrain unit activity on the cortical EEG," *Behavioural Brain Research*, Vol. 115, no. 2, pp. 159–170, 2000.
95. Liu, Q., Y. Huang, F. Xue, A. Simard, J. DeChon, G. Li, J. Zhang, L. Lucero, M. Wang, M. Sierks, G. Hu, Y. Chang, R. J. Lukas, and J. Wu, "A Novel Nicotinic Acetylcholine Receptor Subtype in Basal Forebrain Cholinergic Neurons with High Sensitivity to Amyloid Peptides," *Journal of Neuroscience*, Vol. 29, no. 4, pp. 918–929, 2009.
96. Mercado, E., S. Bao, I. Ordu a, M. a. Gluck, and M. M. Merzenich, "Basal forebrain stimulation changes cortical sensitivities to complex sound.," *Neuroreport*, Vol. 12, no. 10, pp. 2283–2287, 2001.
97. Sofroniew, M. V., R. C. Pearson, and T. P. Powell, "The cholinergic nuclei of the basal forebrain of the rat: normal structure, development and experimentally induced degeneration," *Brain Research*, Vol. 411, no. 2, pp. 310–331, 1987.
98. Biesold, D., O. Inanami, A. Sato, and Y. Sato, "Stimulation of the nucleus basalis of Meynert increases cerebral cortical blood flow in rats," *Neuroscience Letters*, Vol. 98, no. 1, pp. 39–44, 1989.
99. Gielow, M. R., and L. Zaborszky, "The Input-Output Relationship of the Cholinergic Basal Forebrain," *Cell Reports*, Vol. 18, no. 7, pp. 1817–1830, 2017.
100. Froemke, R. C., M. M. Merzenich, and C. E. Schreiner, "A synaptic memory trace for cortical receptive field plasticity," *Nature*, Vol. 450, no. 7168, pp. 425–429, 2007.
101. Goard, M., and Y. Dan, "Basal forebrain activation enhances cortical coding of natural scenes," *Nature Neuroscience*, Vol. 12, pp. 1444–1449, nov 2009.
102. Golmayo, L., A. Nu ez, and L. Zaborszky, "Electrophysiological evidence for the existence of a posterior cortical-prefrontal-basal forebrain circuitry in modulating sensory responses in visual and somatosensory rat cortical areas," *Neuroscience*, Vol. 119, no. 2, pp. 597–609, 2003.
103. Perry, E., M. Walker, J. Grace, and R. Perry, "Acetylcholine in mind: A neurotransmitter correlate of consciousness?," *Trends in Neurosciences*, Vol. 22, no. 6, pp. 273–280, 1999.
104. Paxinos, G., and C. Watson, *The Rat Brain in Stereotaxic Coordinates Sixth Edition*, 2006.
105. Dahil, V., T. Tutar, X. Li, B. Yu, Q. Sun, Y. Zhang, M. Ren, X. Zhang, A. Li, J. Yuan, L. Madisen, Q. Luo, H. Zeng, H. Gong, Z. Qiu, H. N. Nguyen, F. Hupp -Gourgues, E. Vaucher, E. J. Neafsey, E. L. Bold, G. Haas, G. Quirk, C. F. Sievert, R. R. Terreberry, E. Lucas-Meunier, P. Fossier, G. Baux, M. Amar, M. E. Hasselmo, M. Sarter, K. D. Harris, A. Thiele, M. J. Goard, A. C. Kwan, D. Estandian, L. Pinto, M. Xu, Y. Dan, T. C. Harrison, G. Feng, S.-H. Lee, I. Chaves-Coira, M. L. Rodrigo-Angulo, and A. Nu ez, "Cortical state and attention," *Pflugers Archiv European Journal of Physiology*, Vol. 12, no. 1, pp. 77–96, 2018.
106. Turner, J. R., "Nicotinic Cholinergic Receptors in the Rat Cerebellum: Multiple Heteromeric Subtypes," *Journal of Neuroscience*, 2005.
107. Caruncho, H. J., A. Guidotti, J. Lindstrom, E. Costa, and C. Pesold, "Subcellular localization of the $\alpha 7$ nicotinic receptor in rat cerebellar granule cell layer," *NeuroReport*, 1997.

108. Sihver, W., P. G. Gillberg, and A. Nordberg, "Laminar distribution of nicotinic receptor subtypes in human cerebral cortex as determined by [3H](-)nicotine, [3H]cytisine and [3H]epibatidine in vitro autoradiography," *Neuroscience*, 1998.
109. Fuchs, J. L., "[125I] α -Bungarotoxin binding marks primary sensory areas of developing rat neocortex," *Brain Research*, 1989.
110. Alenda, A., and A. Nuñez, "Cholinergic modulation of sensory interference in rat primary somatosensory cortical neurons," *Brain Research*, Vol. 1133, no. 1, pp. 158–167, 2007.
111. Bakin, J. S., and N. M. Weinbergert, "Induction of a physiological memory in the cerebral cortex by stimulation of the nucleus basalis (receptive field plasticity/auditory cortex/associative learning)," *Neurobiology*, Vol. 93, no. October, pp. 11219–11224, 1996.
112. Bennett, C., S. Arroyo, D. Berns, and S. Hestrin, "Mechanisms Generating Dual-Component Nicotinic EPSCs in Cortical Interneurons," *Journal of Neuroscience*, Vol. 32, no. 48, pp. 17287–17296, 2012.
113. Metherate, R., and J. H. Ashe, "Nucleus basalis stimulation facilitates thalamocortical synaptic transmission in the rat auditory cortex," *Synapse*, Vol. 14, no. 2, pp. 132–143, 1993.
114. Obermayer, J., M. B. Verhoog, A. Luchicchi, and H. D. Mansvelder, "Cholinergic Modulation of Cortical Microcircuits Is Layer-Specific: Evidence from Rodent, Monkey and Human Brain," *Frontiers in Neural Circuits*, Vol. 11, no. December, pp. 1–12, 2017.
115. Tremblay, N., R. a. Warren, and R. W. Dykes, "Electrophysiological studies of acetylcholine and the role of the basal forebrain in the somatosensory cortex of the cat. II. Cortical neurons excited by somatic stimuli.," *Journal of Neurophysiology*, Vol. 64, no. 4, pp. 1212–22, 1990.
116. Uchida, S., and F. Kagitani, "Effect of basal forebrain stimulation on extracellular acetylcholine release and blood flow in the olfactory bulb," *Journal of Physiological Sciences*, pp. 1–9, 2017.
117. Chaves-Coira, I., M. L. Rodrigo-Angulo, and A. Nuñez, "Bilateral Pathways from the Basal Forebrain to Sensory Cortices May Contribute to Synchronous Sensory Processing," *Frontiers in Neuroanatomy*, Vol. 12, no. January, pp. 1–9, 2018.