

Function Generator

Sawtooth

Sine

Square

Amplitude

10

Frequency

100

Hz

Offset

0

Channel No

1 Channel

Phase

0

Period (ms)

10

OK for 2 CH

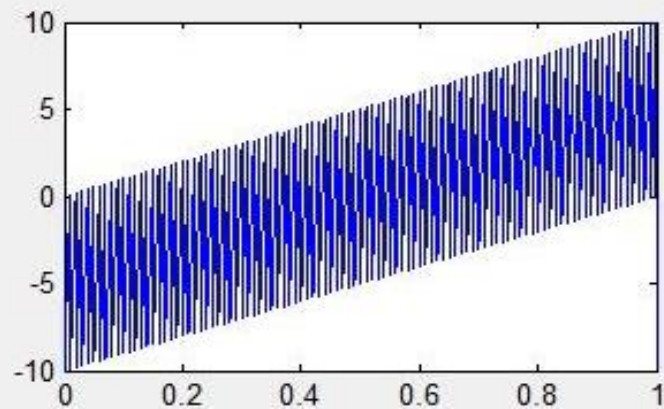
Rectangular Pulse

Duty Cycle

Pulse Width

s

Stop



Function Generation
Part (Left Block)

1st Signal

$5 * \text{saw}(2 * \pi * 1 * t + 0) + 0$

OK

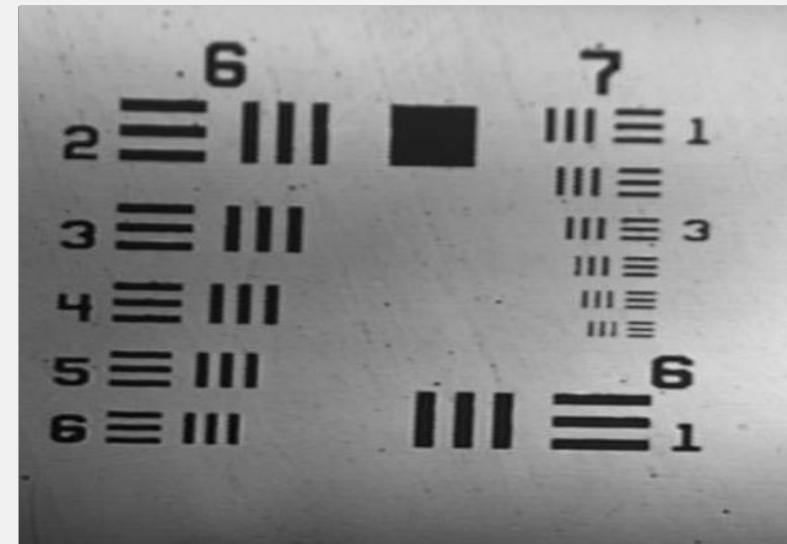
2nd Signal

$5 * \text{saw}(2 * \pi * 100 * t + 0) + 0$

Reset

Combine

Image Acquisition



10

Image Acquisition

Stop

1

100

Raster

Image Acquisition
and Construction
Part (Right Block)