

SULTAN SÜLEYMAN DÂR-ÜŞ-SIFÂSI

DŞ 2

İSTANBUL SÜLEYMANIYE

TB (6-1)

TE (6-1)

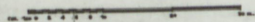
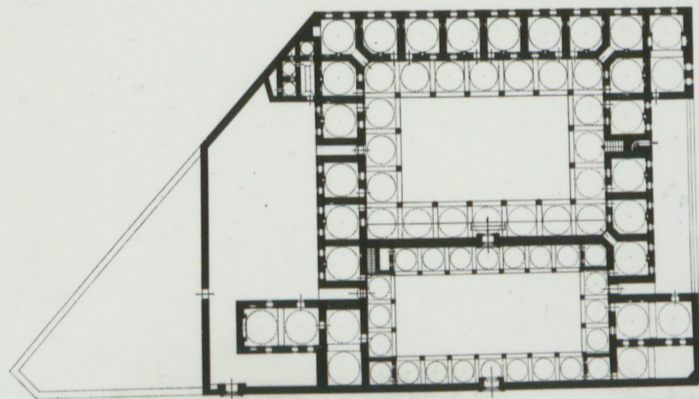
TM (5-1 ; 1-5)

AKF.SY.İ121.

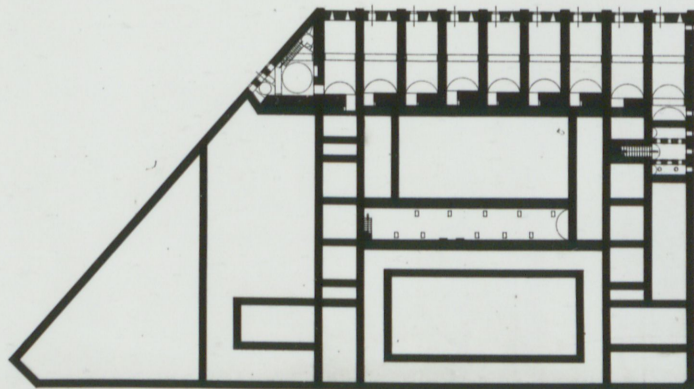


SÜLEYMANİYE / DARÜŞŞİFA

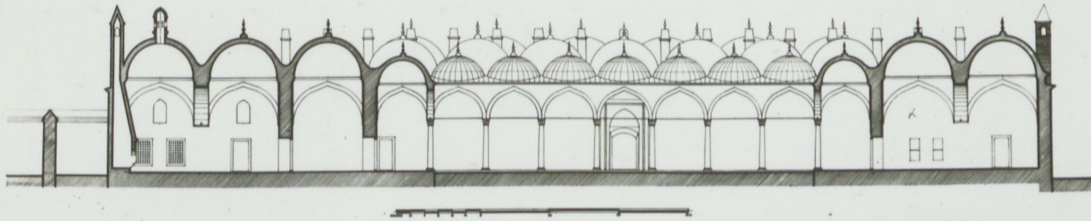
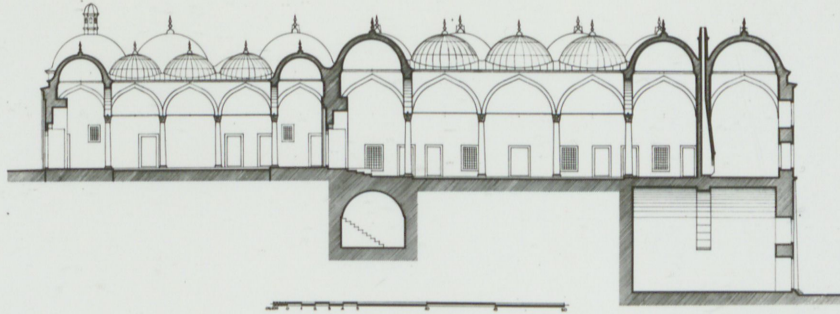
ISTANBUL SÜLEYMANIYE DARÜŞŞİFASI ZEMİN KATI



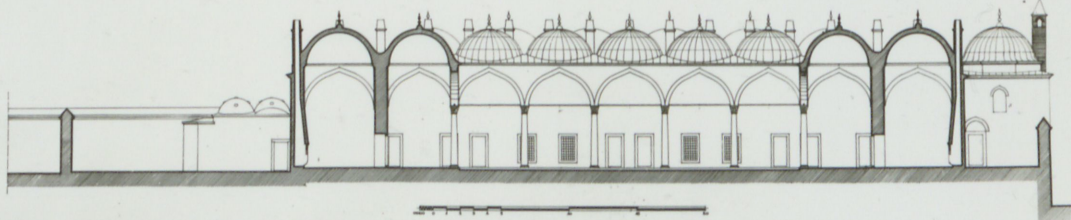
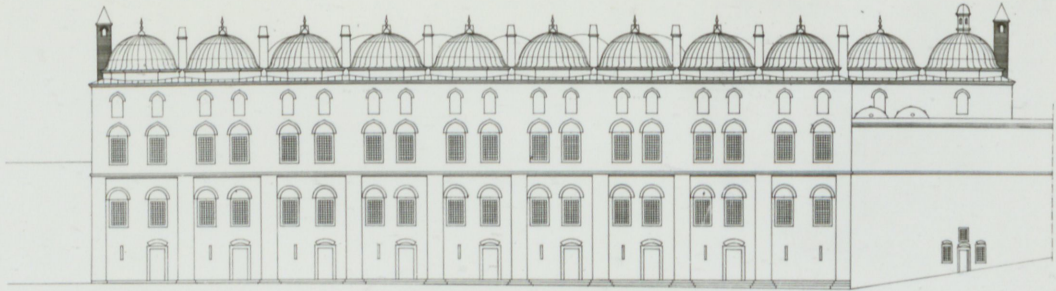
ISTANBUL SÜLEYMANIYE DARUŞŞIFASI BODRUM KATI PLANI



ISTANBUL SÜLEYMANIYE DARUŞŞIFASI KESİMLERİ



ISTANBUL SÜLEYMANIYE DARUŞŞIFASI GÖRÜNÜŞ VE KESİMİ



مکتبہ آسکر

۱۳۰۵

Matbaa-i Askeriyye

1305

BOĞAZICI ÜNİVERSİTESİ

REKTÖRLÜK

(Bîmaristan - e Süleymân Han) Pür
dâr - üs - şifâ öyle bir kan devâ u
kavader ki _____ üs günde hasta
şifâ bulur. Ve gâyet _____ üstâd - e
kâmil , fassâd - e _____
cerrahlar vardu. Pür dâr _____

Ama Bayezid Han ve Selim Hanın
bîmarhâleri yokdur.

Evlîya Celîbi, I. s. 321

SÜLEYMANİYE DARÜŞŞİFASI - ZEMİN KAT PLANI

