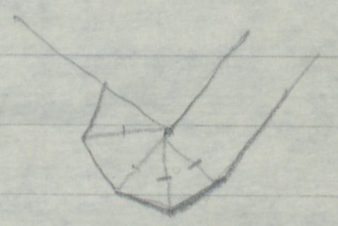
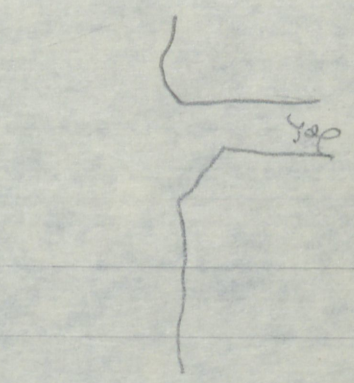
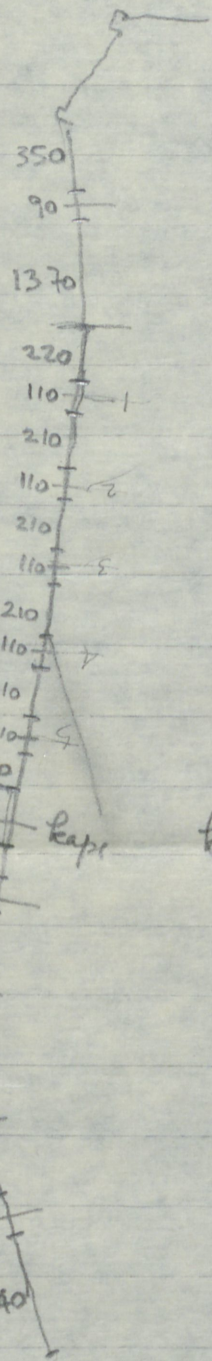
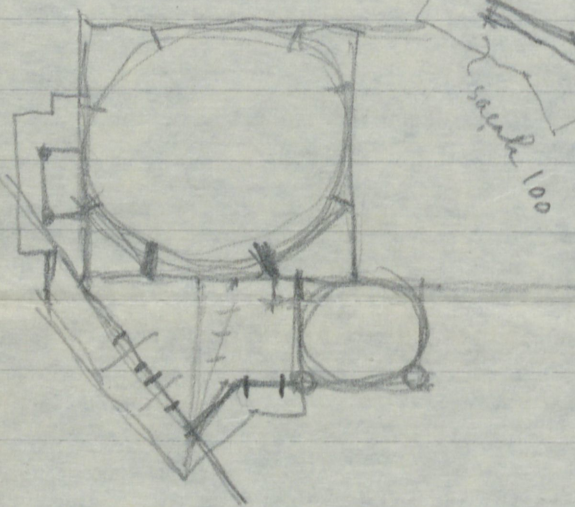
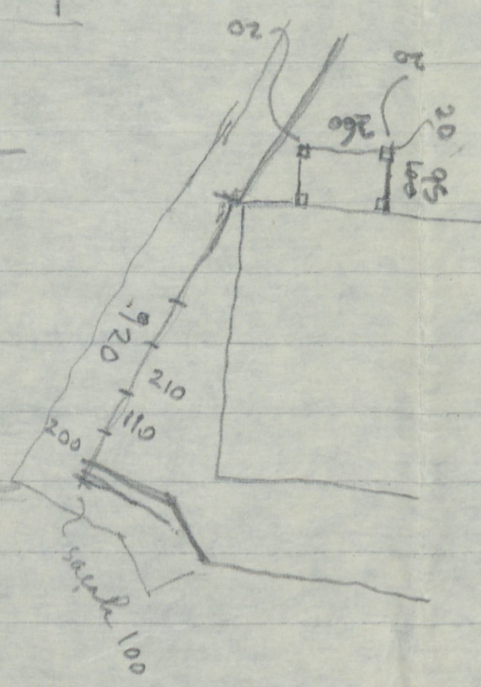
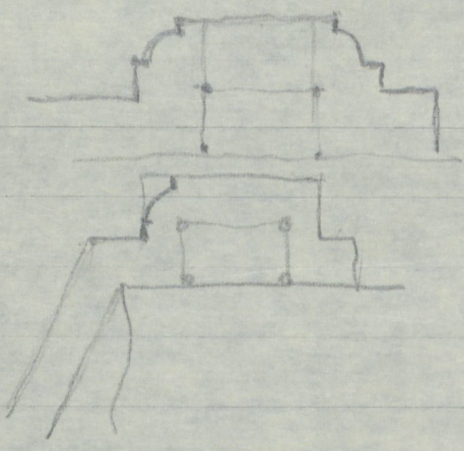
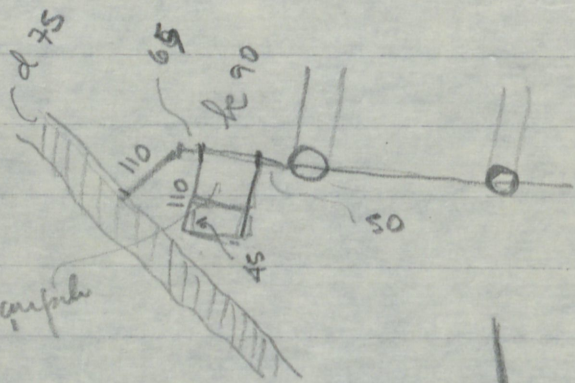


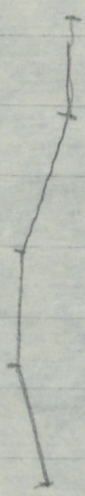
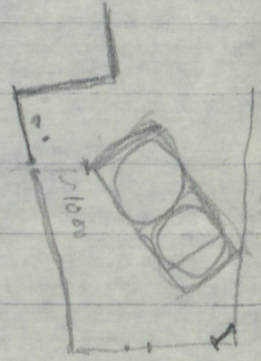
Hareki Telhe Çukması 350



kapıdan sonra duvar gene kuruluyor



Çukma taş tuğla (2 sıra)



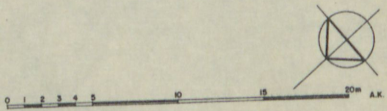
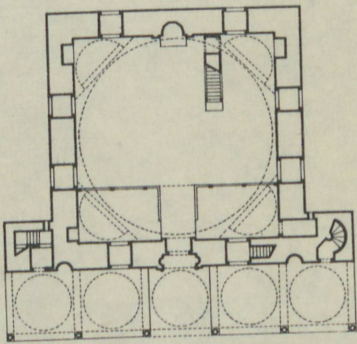
Haseli

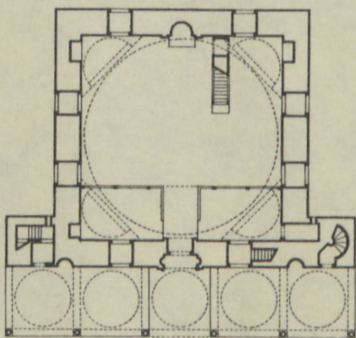
Maltap

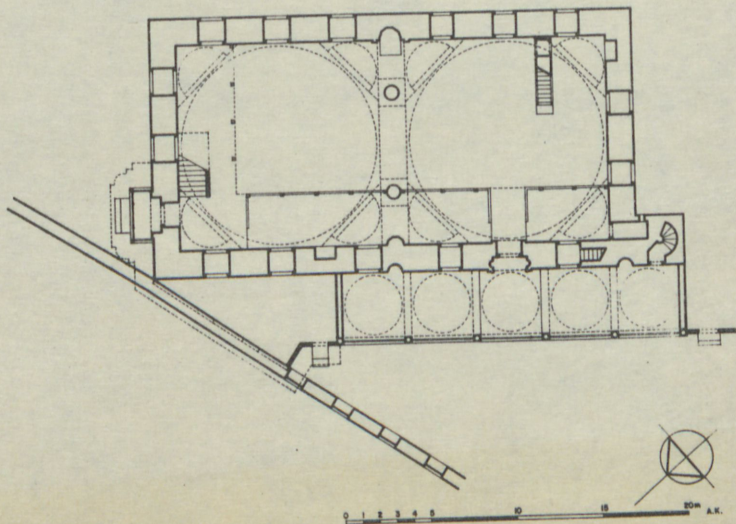
Evan. itingam acik. Bes Kolon 4' x 4' boy, marmar. Kopedelhi qri faz. Pasillalar.
Yikish ve kopedelhi pahl. Kemerler tupla. Ota korasam kargi malyaz - aelli ustai
pucre, 0 sebke. Cati absaf. Kemi kuyun mamq. Herhalde kiremilt kopacaklar.
Dotr baronali, uhibiyor eyvama. Baca faz, tupla k.
Sohal apheri ^{koqayy kuyji} kuyjeli yapilmis (son oramda)

Cami kitalah var. 1.4.41. dikimili yam kubbe altunda stal. ki portel nizi. Yine dikimili
yar am kubbeli mihrablar. mural kol. boy marmar. Bal. baylak. Kemerleri
tupla. kubbeleri paur dantifi.
Kubbe ^{filikli kuyji} paur dantifi. Kasmakti 7 par. 8. dipirine bitiriyor. Ota kolonlar kuyhereng; paur fil.
Mihrab kemer absunda. stal.
Mimbar absaf, yazgi boyak. Kalem iplasi var.
Minare. kuyfeli. poligonol. stal. konsol. Bapartma geom. dasan kohluluk. kuyun kuyluk.
Kubbe, cati kuyun kuyji. Kubbelerde selhi kuyherli paur anda.
Pxten divarlar. faz - tupla.
~~9. kuyheren~~ kubbe kuyher ^{guyher} kuyher lala. ~~guyher~~ kuyher kuyher
Kuy'an kuyru, absaf yap.

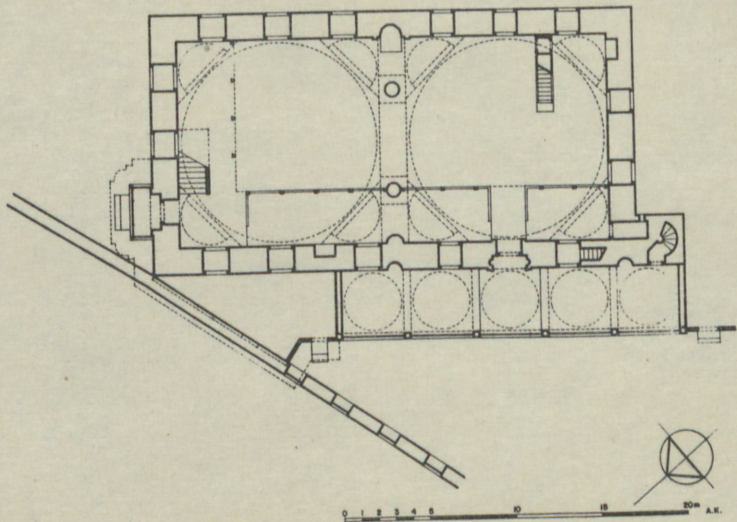
Resimde olmayan. Sebik, tuike.







0 1 2 3 4 5 10 15 20^m A.K.



Cami - bahlavah beyaz mermer kolon. Kaz kemer. son cemaat yeri camibandı
iq kafı taş. İkinci taş, altı stal, beşli. mihrabı, den kufi yazı.
50 y mihrabı stalaktitli. Birinci kubbe karnaj, pencereleeri yuvarlak, ikinci -
sinde siri yapılmış.

Mekteb - koridor harçlı kesme kufeli. pen. mermer fove, 0 alçı sebete.
bach sikişgen.

Medrese Bahlavah başlık. avlu ortasında havuz. Dış. beyaz duvar; iç, kiremit.
renkli camlar fakat barok stilde (yeni)

Diyanet İşleri Başkanlığı
İstanbul Eğitim Merkezi
avlu kol. mermer, somali.

