

1. Sultan Ahmet Complex, Istanbul. General view.

Bogazici University Library



14

39001100317356

2. Sultan Ahmet Complex. General view.



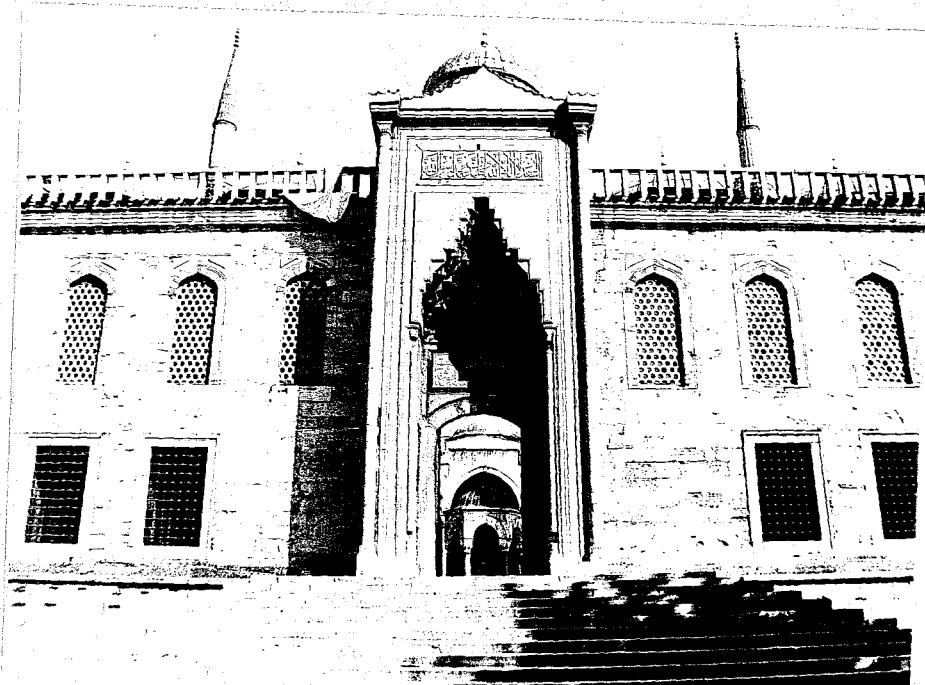
133932

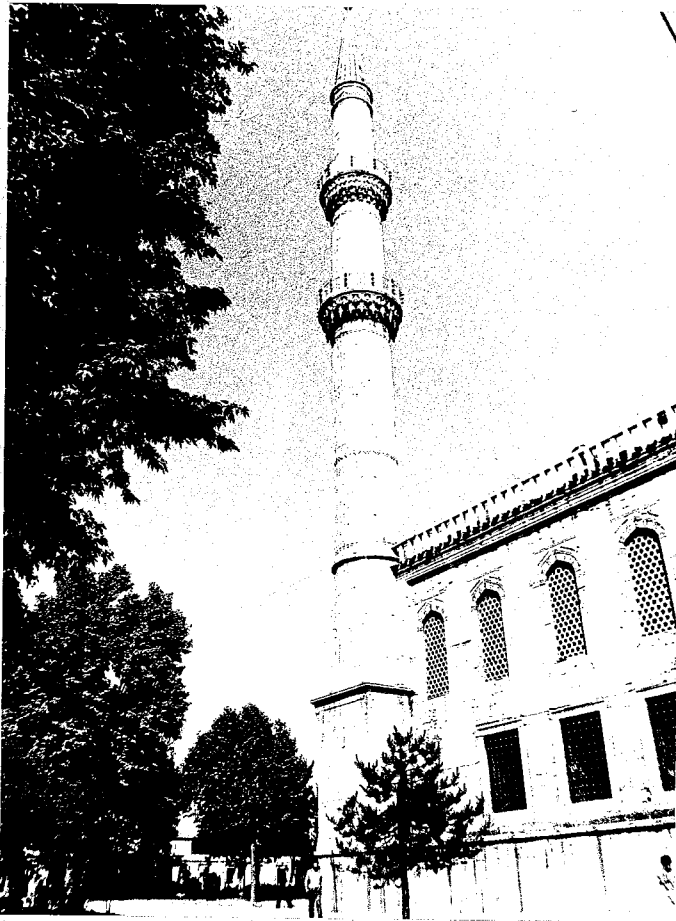




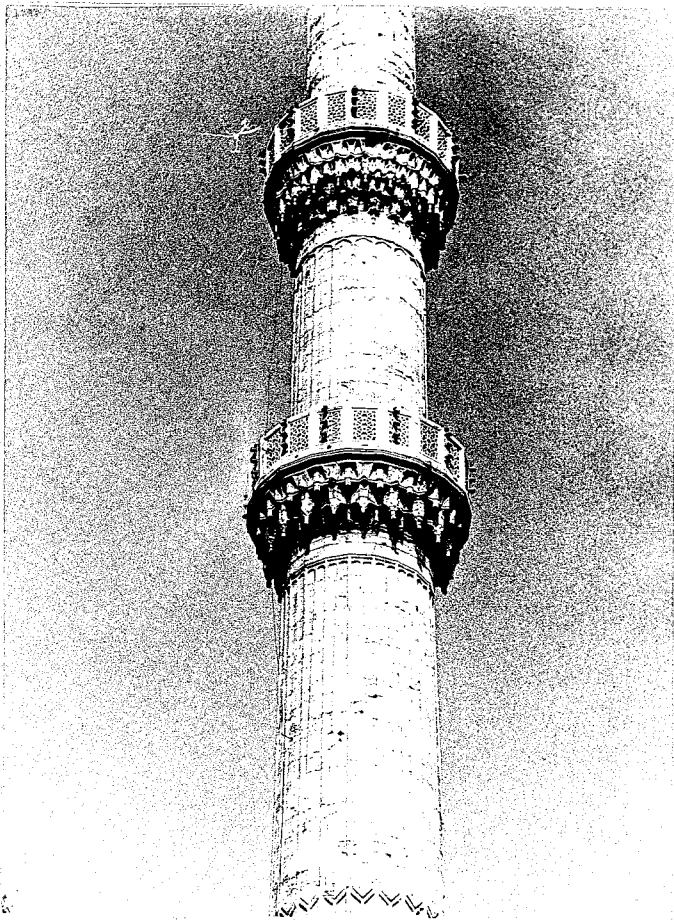
3. Eastern façade of Sultan Ahmet Mosque.

4. Sultan Ahmet Mosque. Northern gate of courtyard.





5. Sultan Ahmet Mosque.
North-eastern minaret.



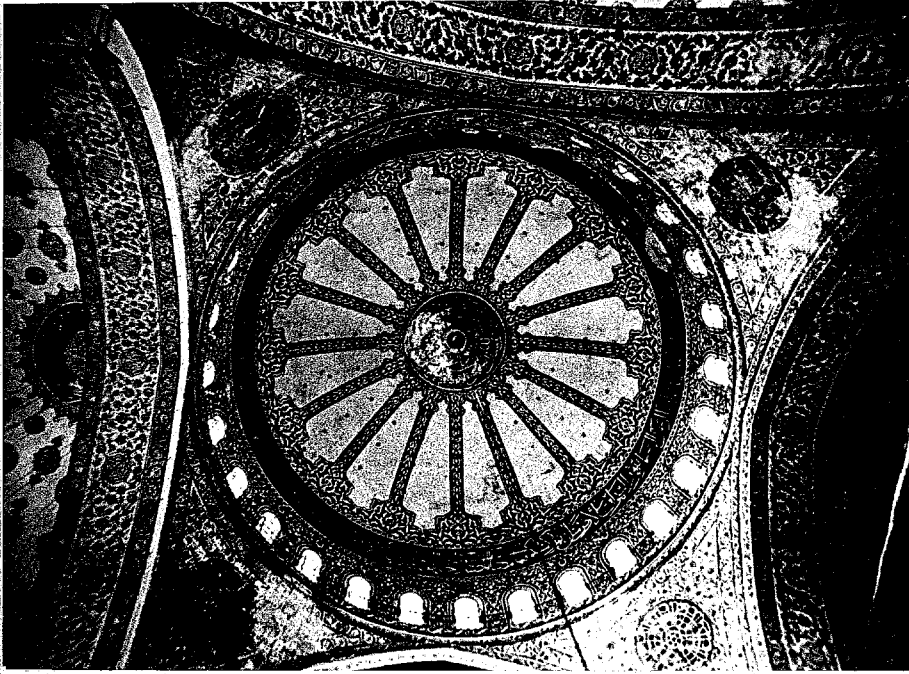
6. Sultan Ahmet Mosque.
Detail from north-
eastern minaret.



7. Entrance door by the kibla wall in western façade of Sultan Ahmet Mosque.

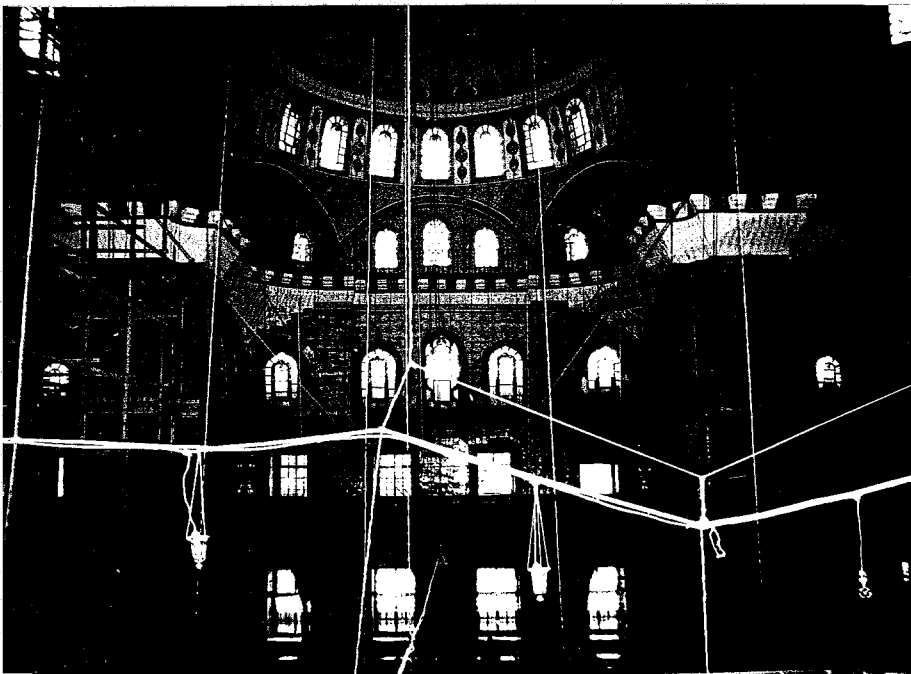
8. Detail of doorknob on the same door.

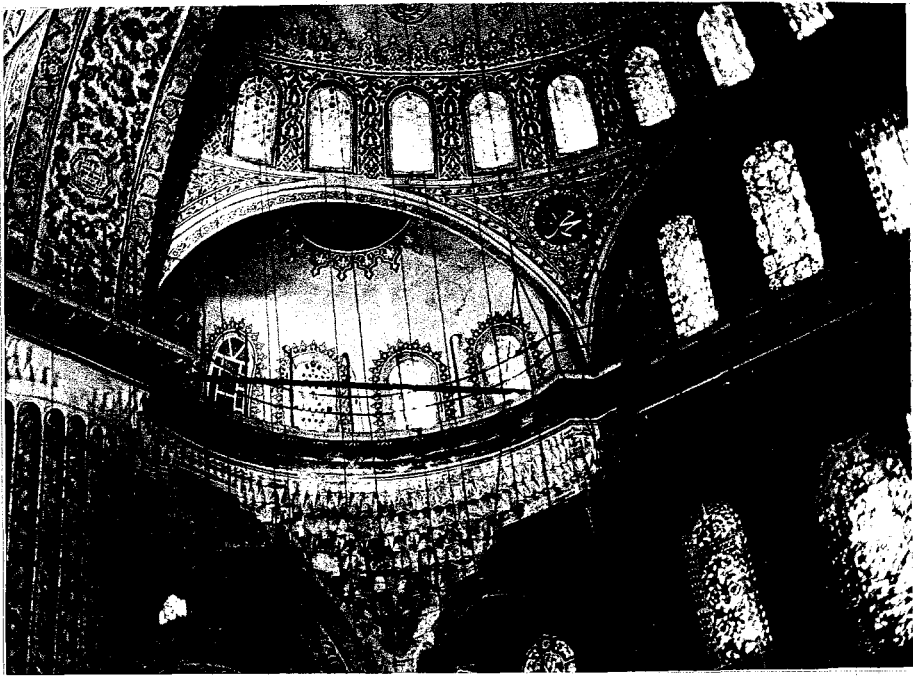




9. Interior view of central dome of Sultan Ahmet Mosque.

10. Interior view of Sultan Ahmet Mosque.





II. Sultan Ahmet Mosque. Transitional elements.

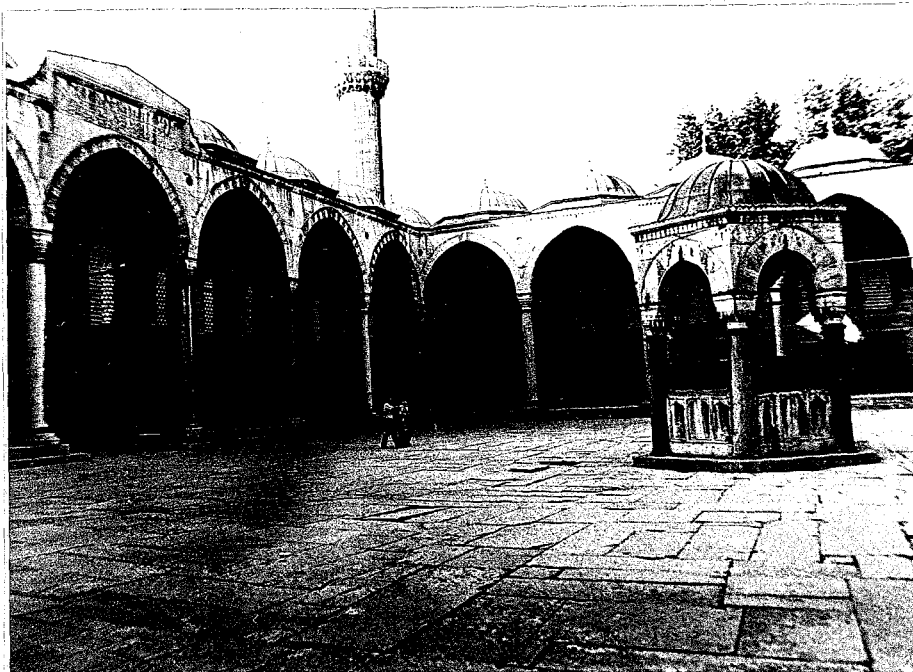
I2. Sultan Ahmet Mosque. Detail from pier of dome.

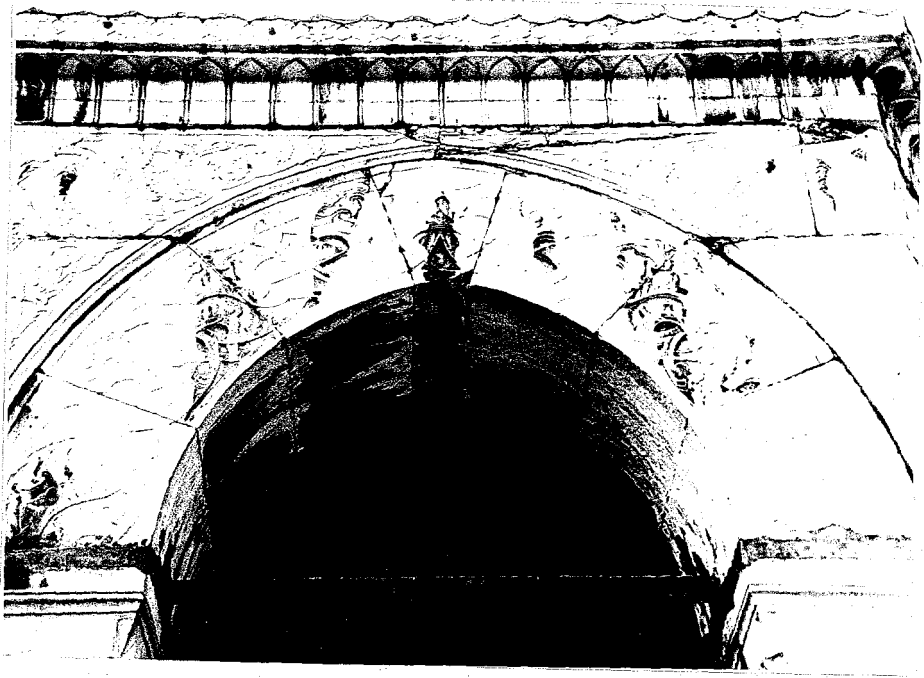




I3. Sultan Ahmet Mosque. Portal leading to mosque from courtyard.

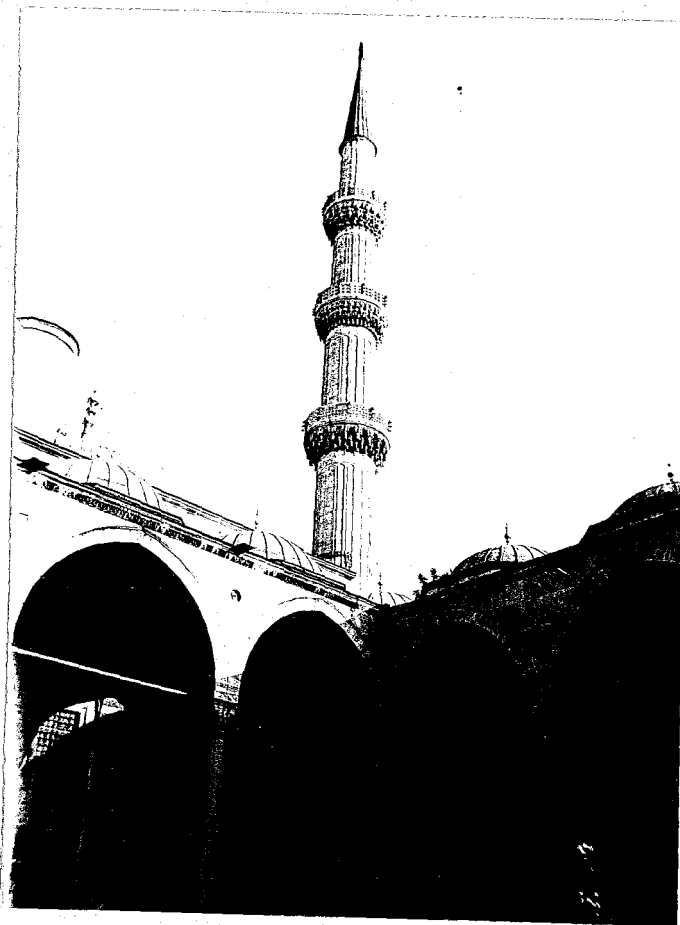
I4. Arcaded courtyard and şadırvan of Sultan Ahmet Mosque.

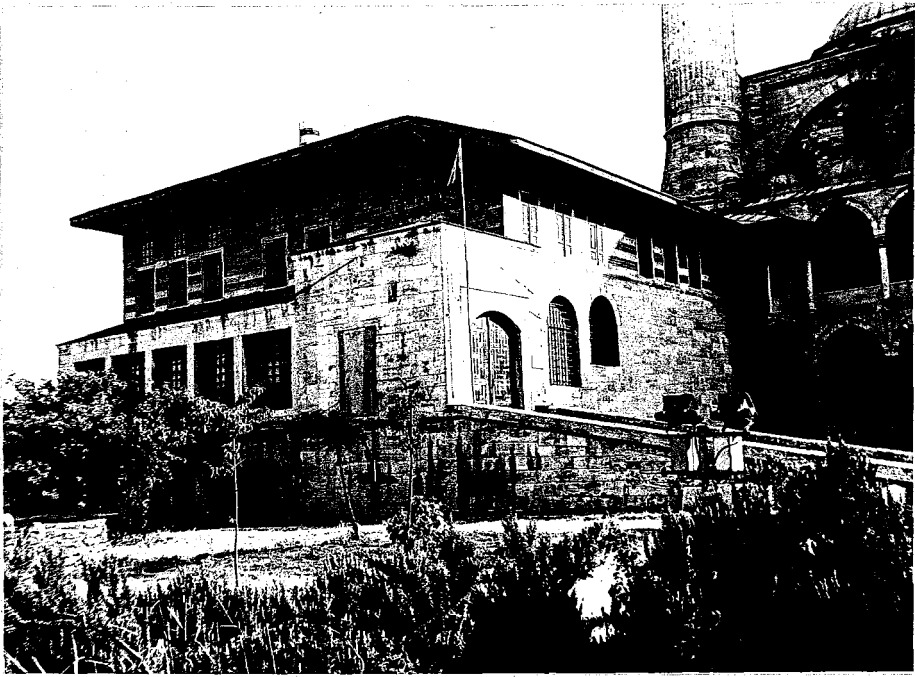




15. Sultan Ahmet Mosque. Detail from şadırvan.

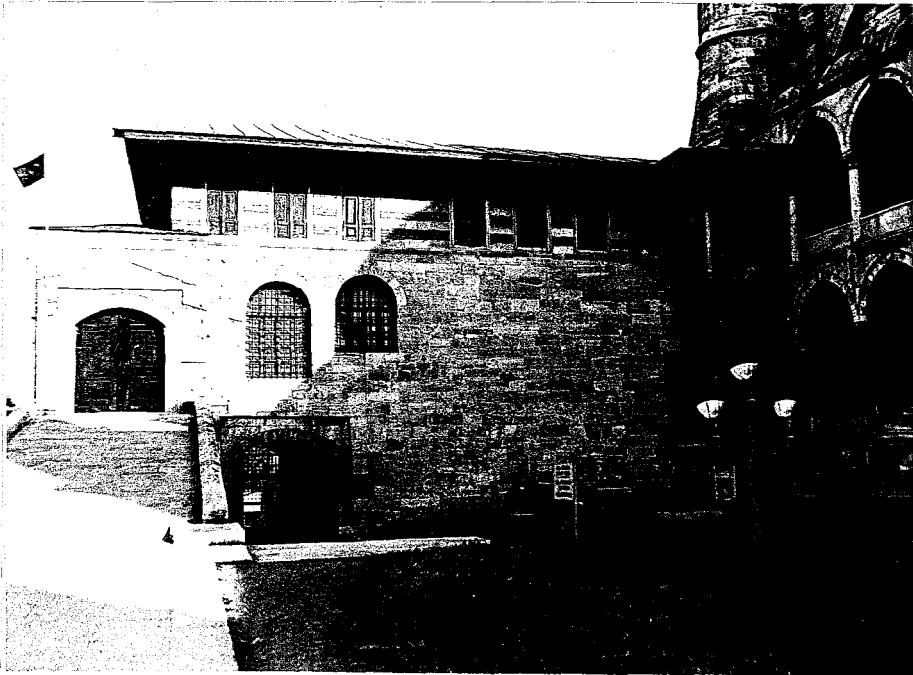
16. Sultan Ahmet Mosque. South-western minaret of courtyard.

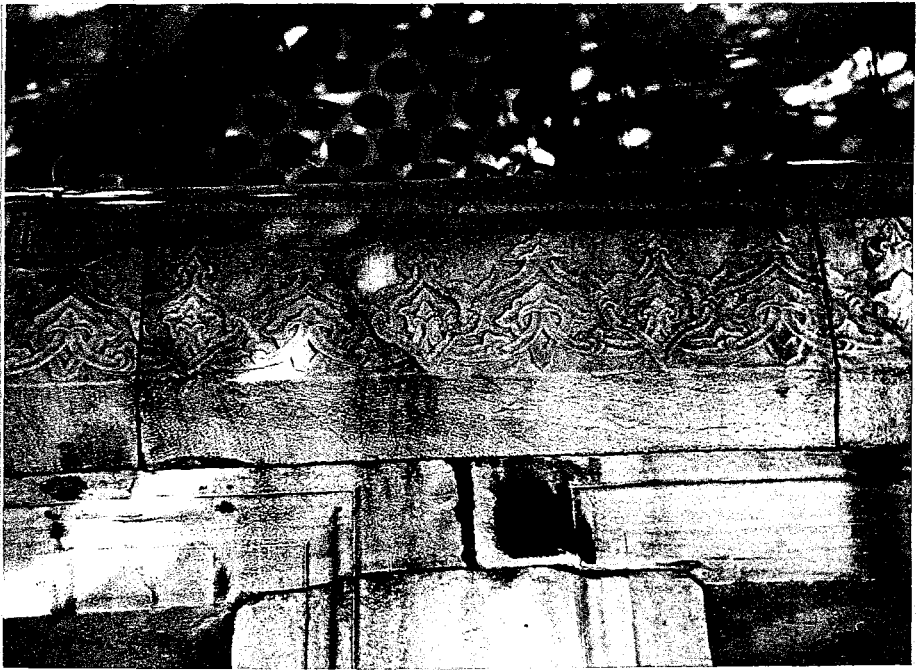




I7. Sultan Ahmet Complex. Royal pavilion (Hünkâr kasrı).

I8. Sultan Ahmet Complex. Royal pavilion.

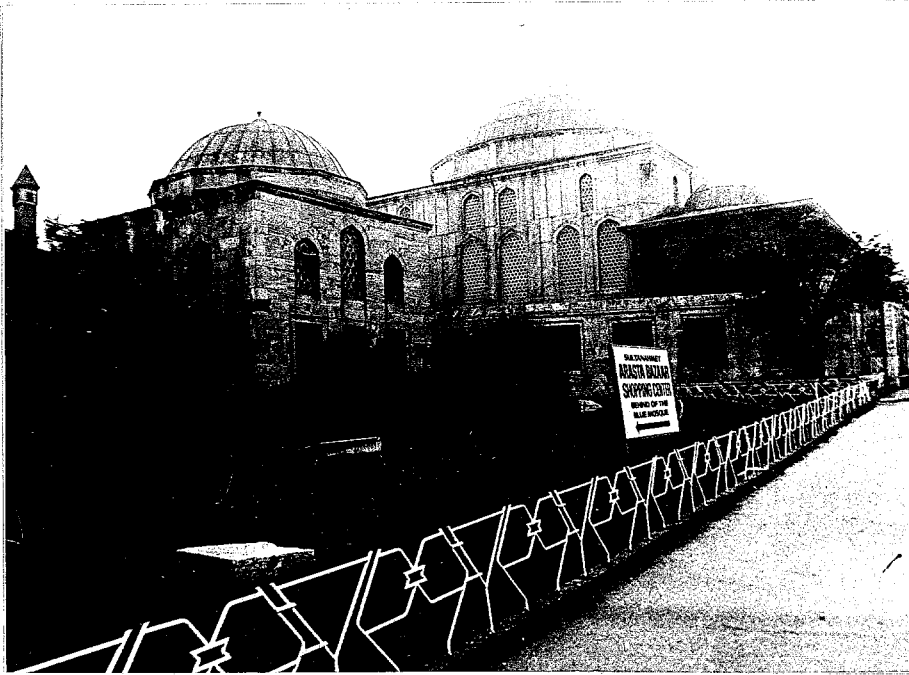




19. Sultan Ahmet Complex. Detail from frieze on wall of outer courtyard.

20. Sultan Ahmet Complex. Sıbyan mektebi.

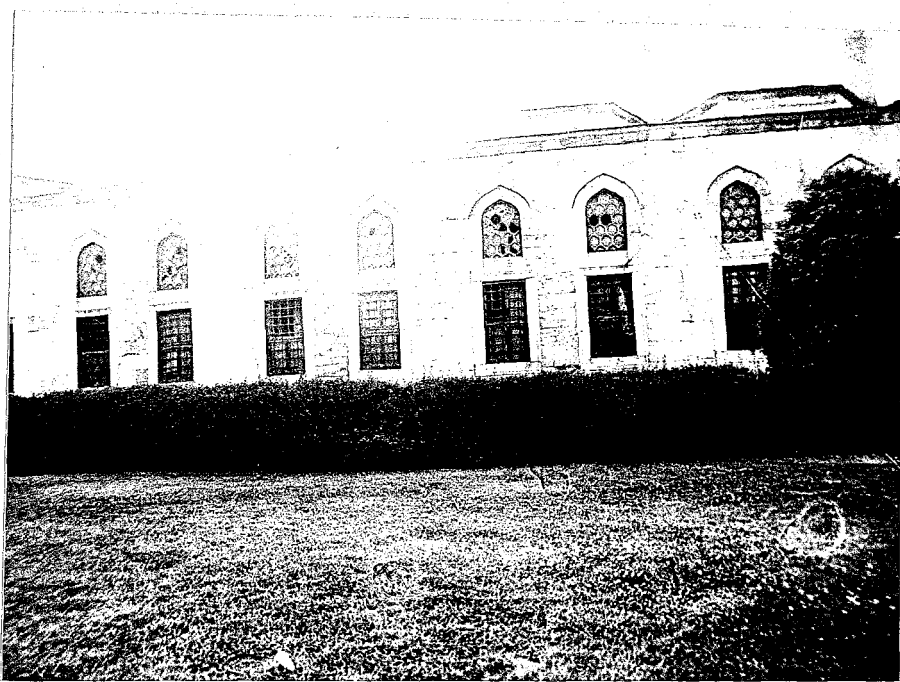




21. Sultan Ahmet Complex. General view of türbe and classroom of medrese.

22. Sultan Ahmet Complex. Türbe.





23. Sultan Ahmet Complex. Outer view of medrese cells.

24. Sultan Ahmet Complex. The narrow street between türbe and medrese walls.

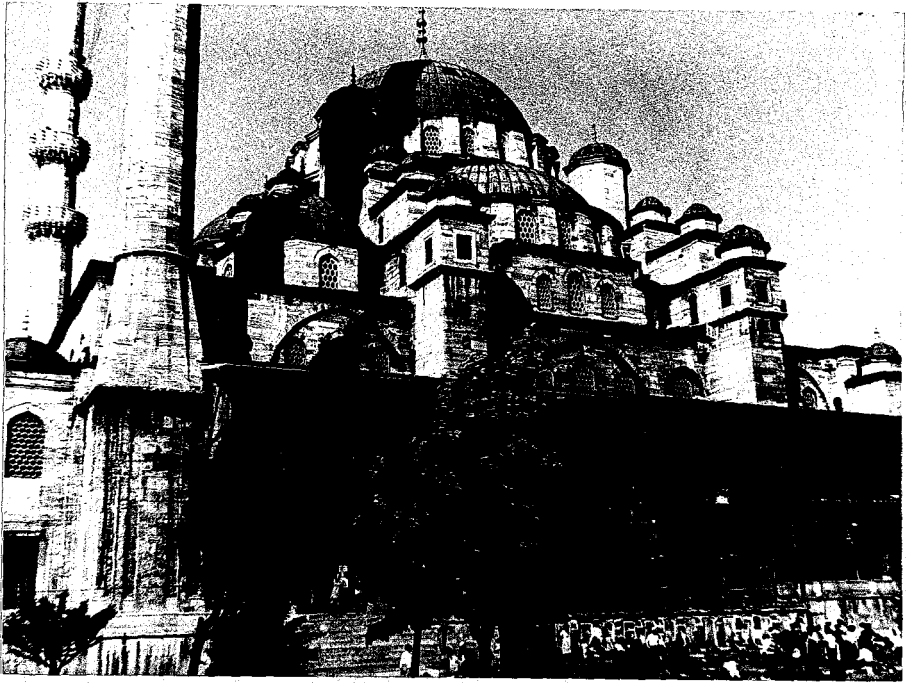




25. Yeni Valide Complex, Istanbul.
General view.

26. Yeni Valide Complex. General view.

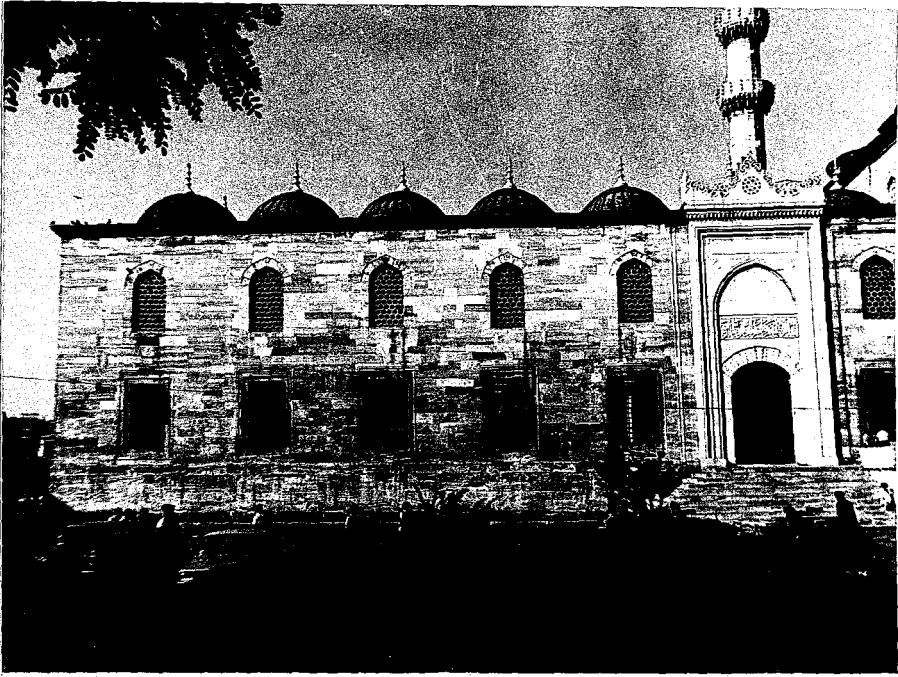




27. West façade of Yeni Cami.

28. West façade of Yeni Cami.





29. Yeni Cami. West façade of the courtyard.

30. Yeni Cami. View of covering system from west façade.

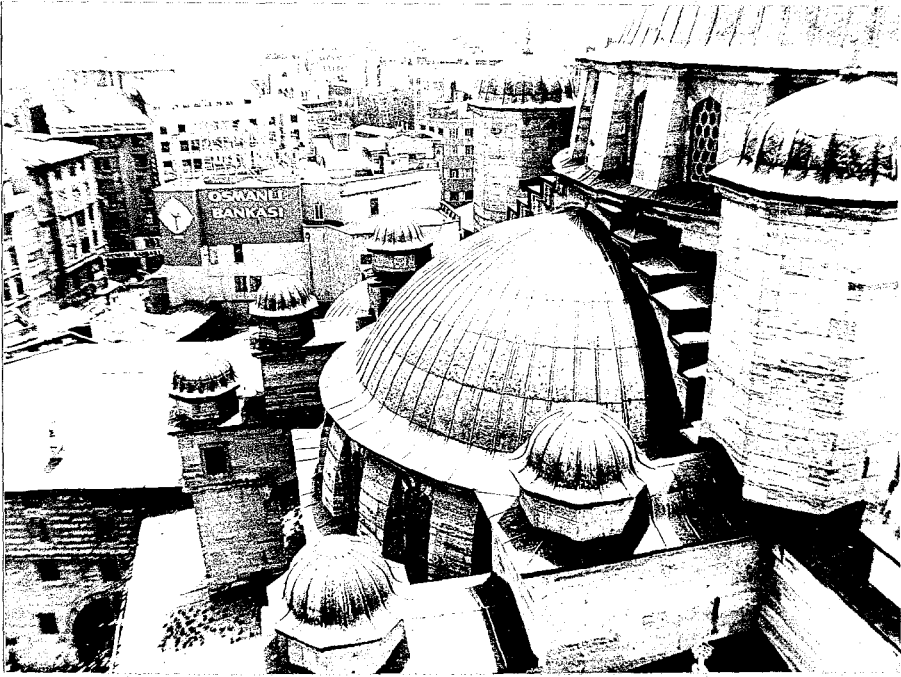




31. Yeni Cami. View of covering system from north façade.

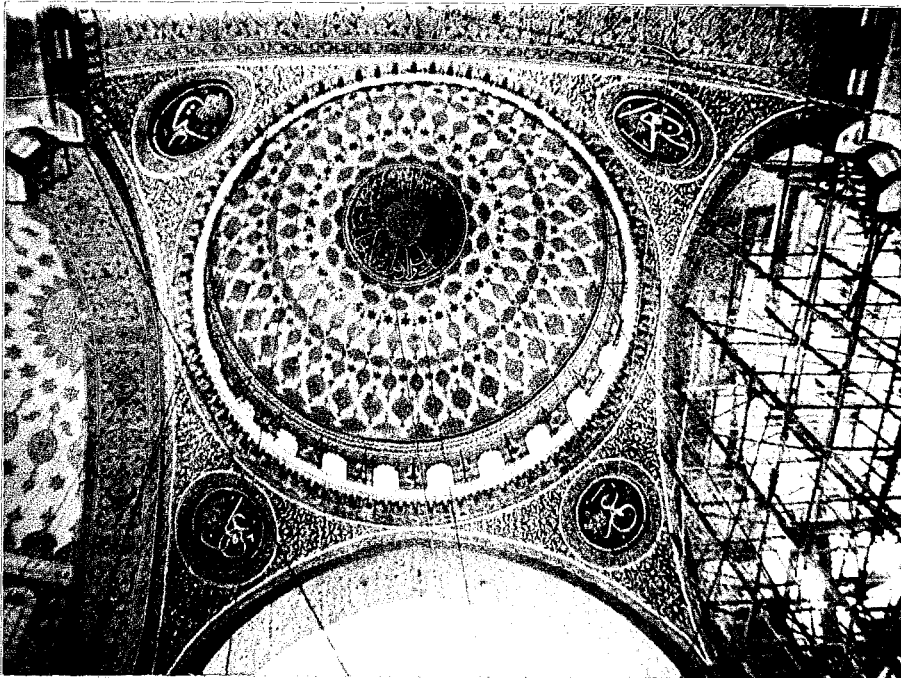
32. Central dome and octagonal corner tower of Yeni Cami.





33. Yeni Cami. Supporting system.

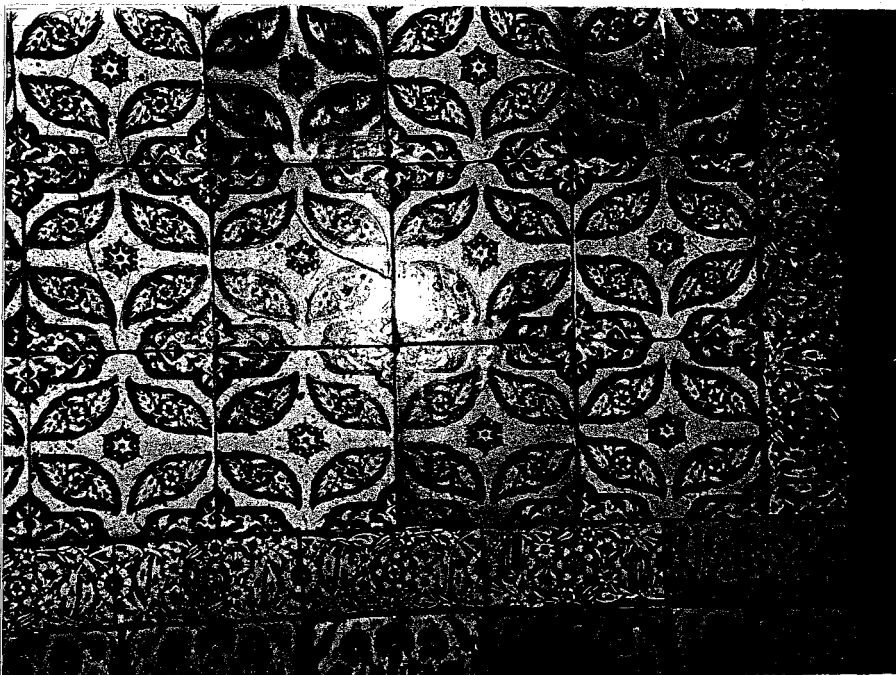
34. Yeni Cami. Interior view of central dome.

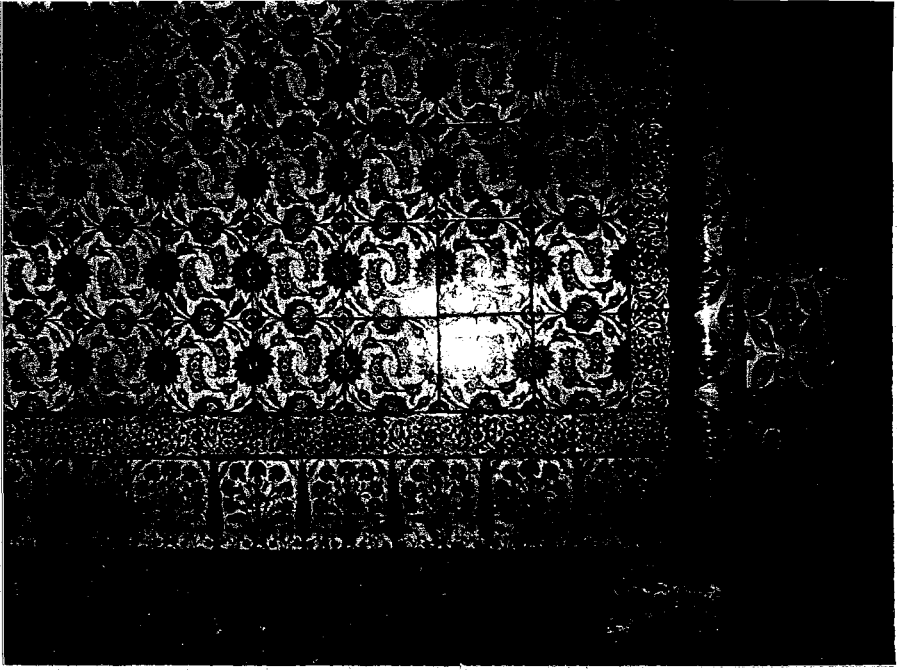




35. Yeni Cami. Interior view of western façade.

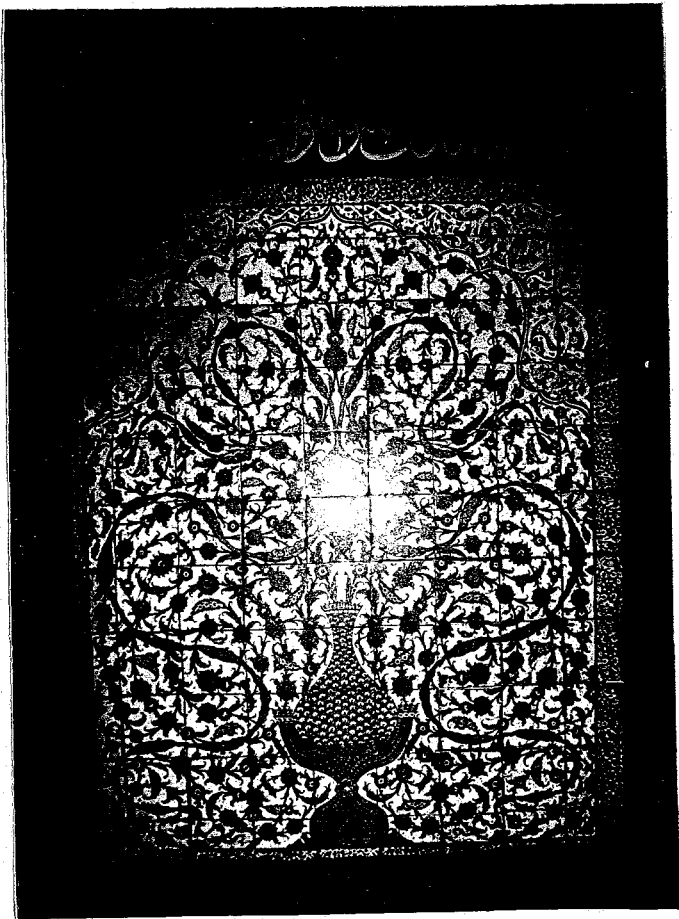
36. Yeni Cami. Detail of ceramic tile.

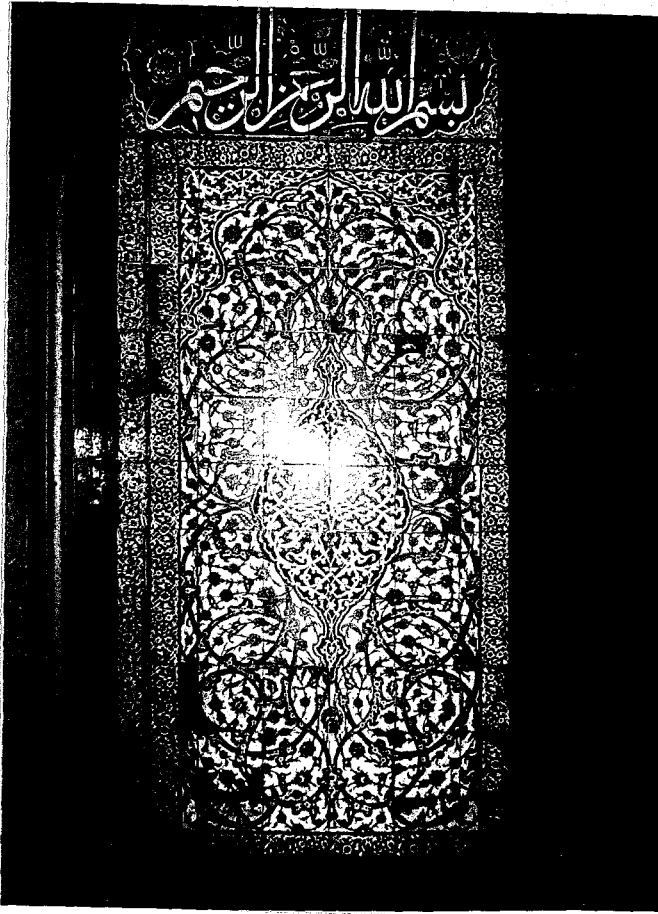




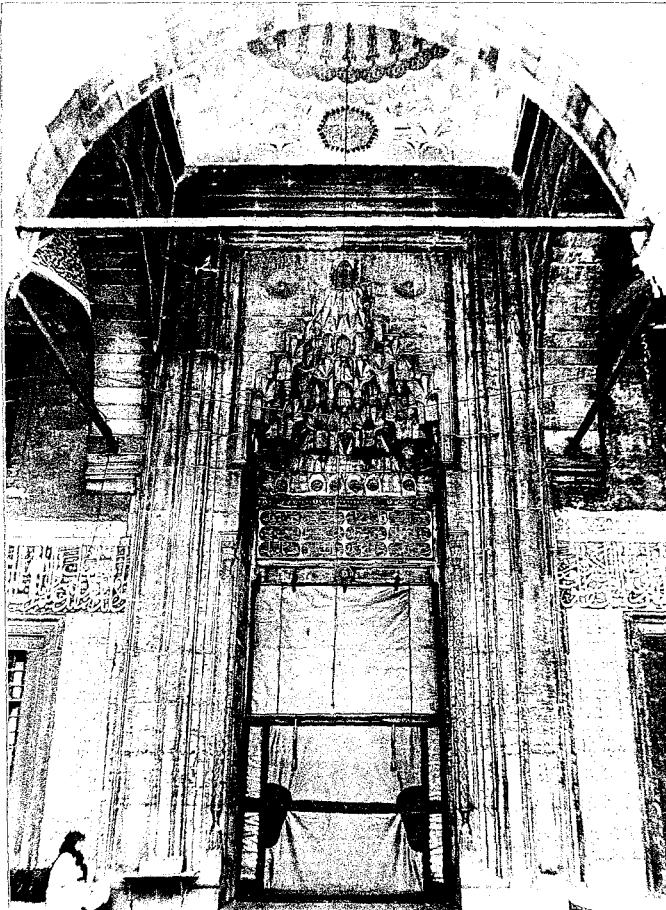
37. Yeni Cami. Detail of ceramic tile.

38. Detail of ceramic tile from Yeni Cami
royal lodge.

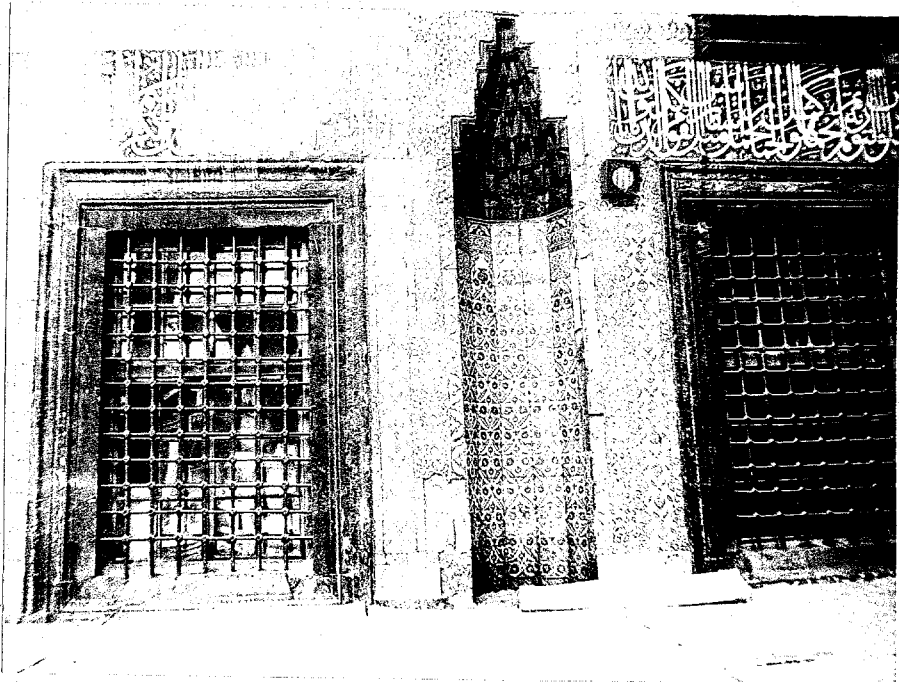




39. Detail of ceramic tile from Yeni Cami royal lodge.

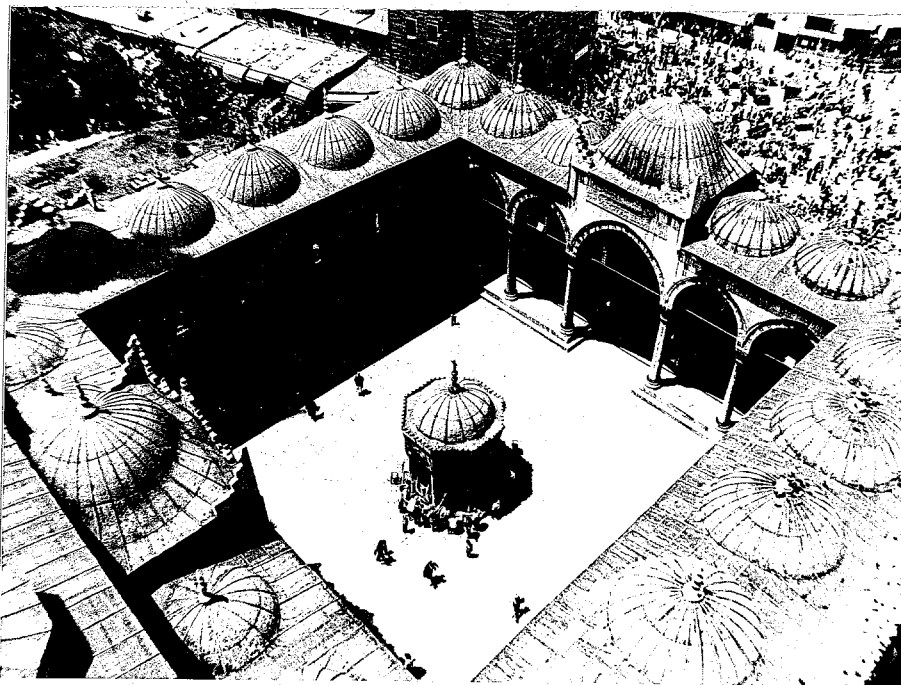


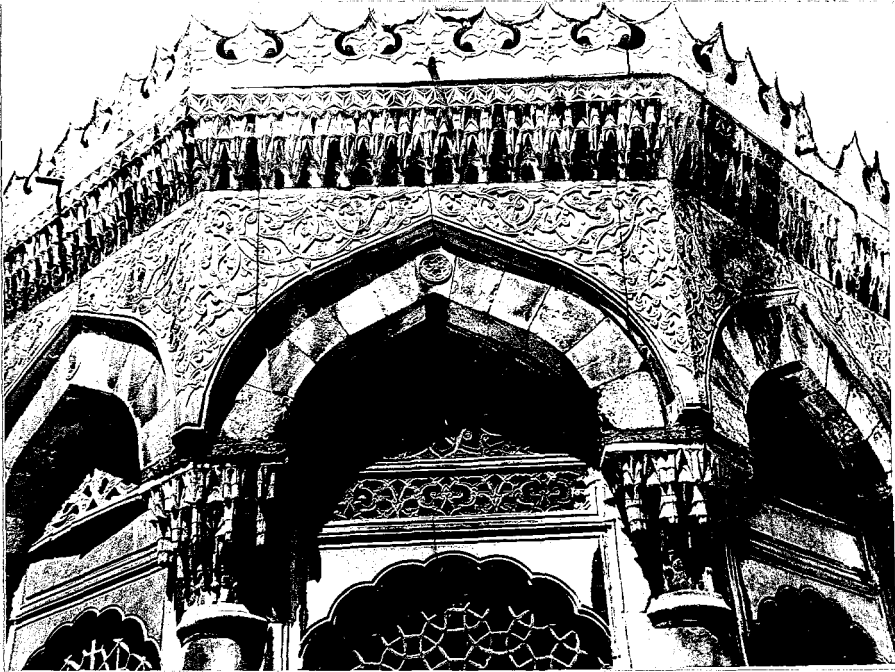
40. Yeni Cami. Gateway to the courtyard.



41. Yeni Cami. Section of the late prayer hall.

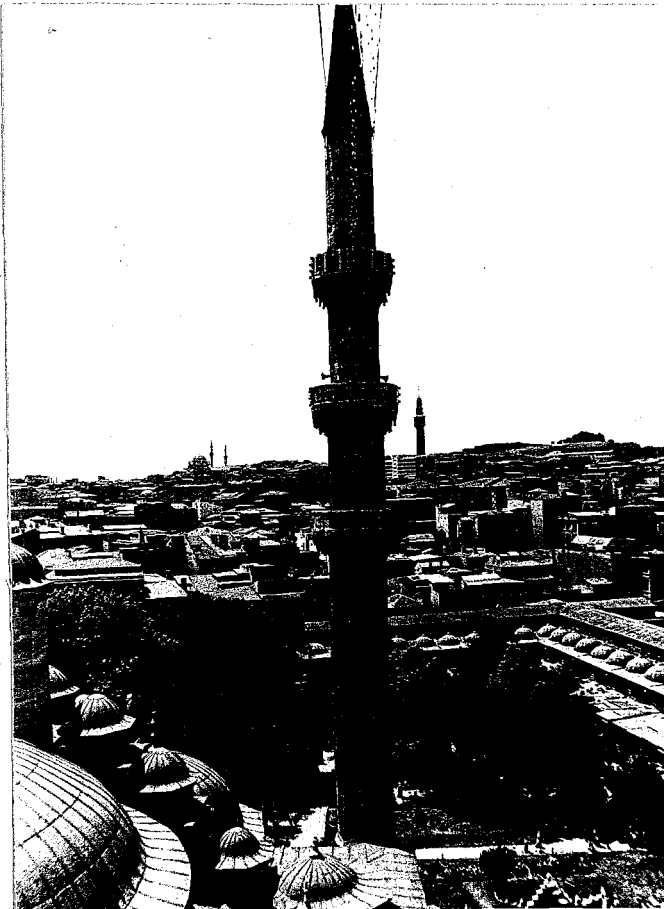
42. Yeni Cami. General view of courtyard from northeastern minaret.





45. Yeni Cami. Detail from şadırvan.

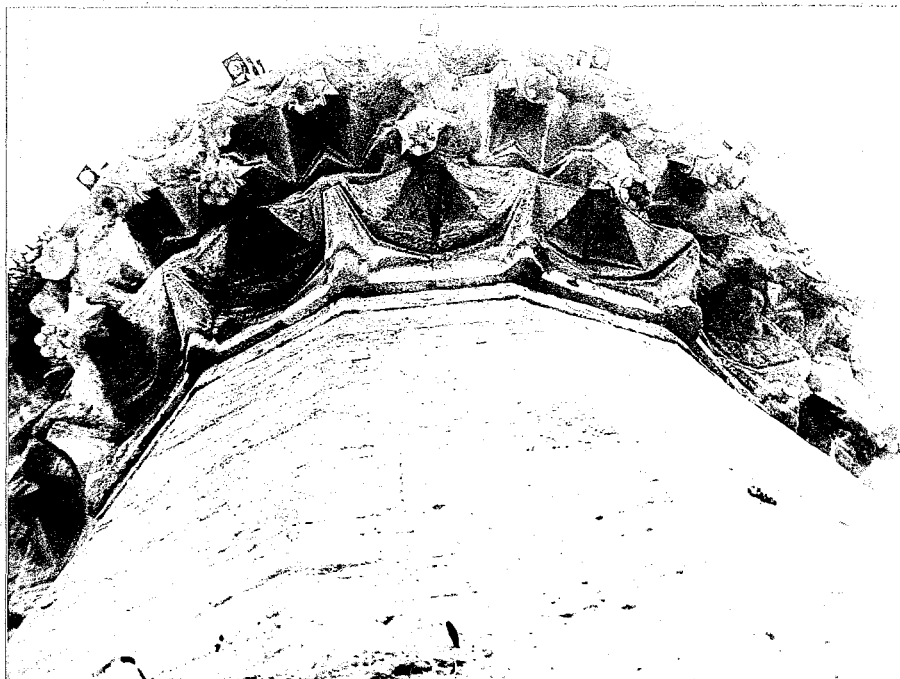
46. North-western minaret of Yeni Cami.

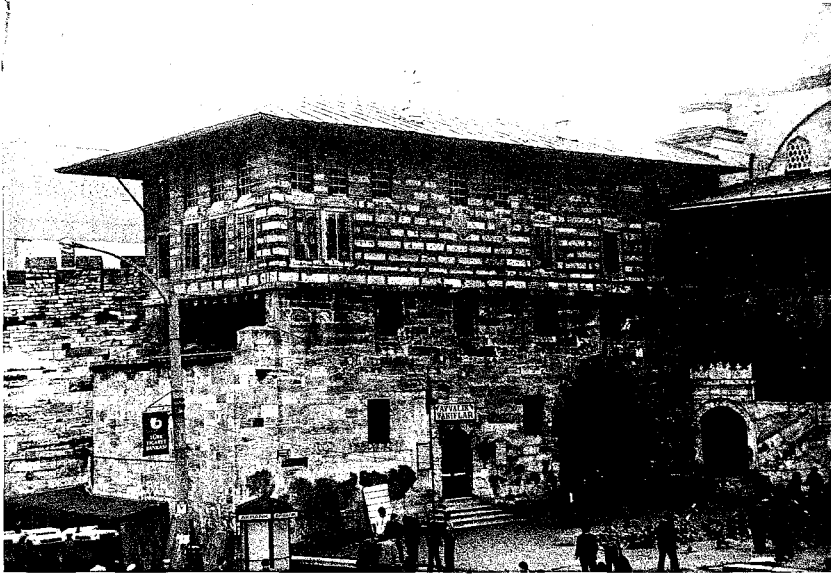




47. Yeni Cami. Detail from north-western minaret.

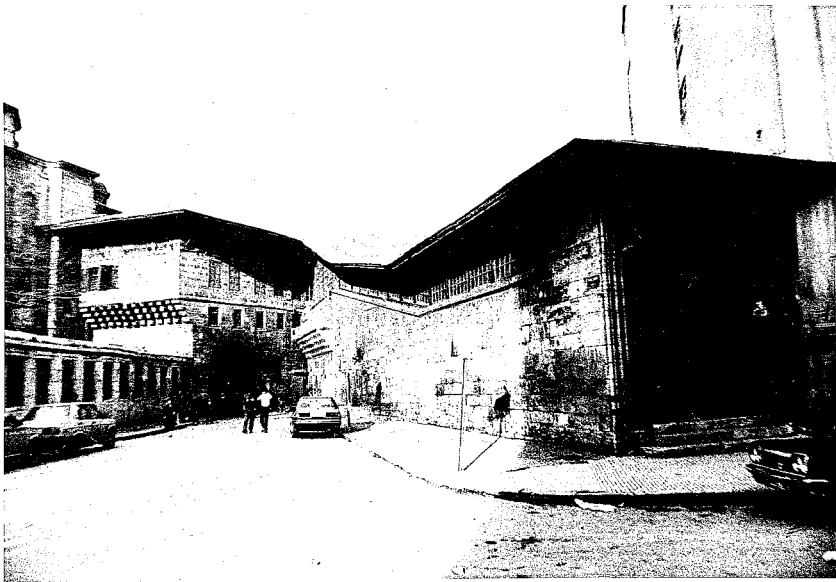
48. Yeni Cami. Detail from north-western minaret.





49. Yeni Valide Complex. Royal pavilion.

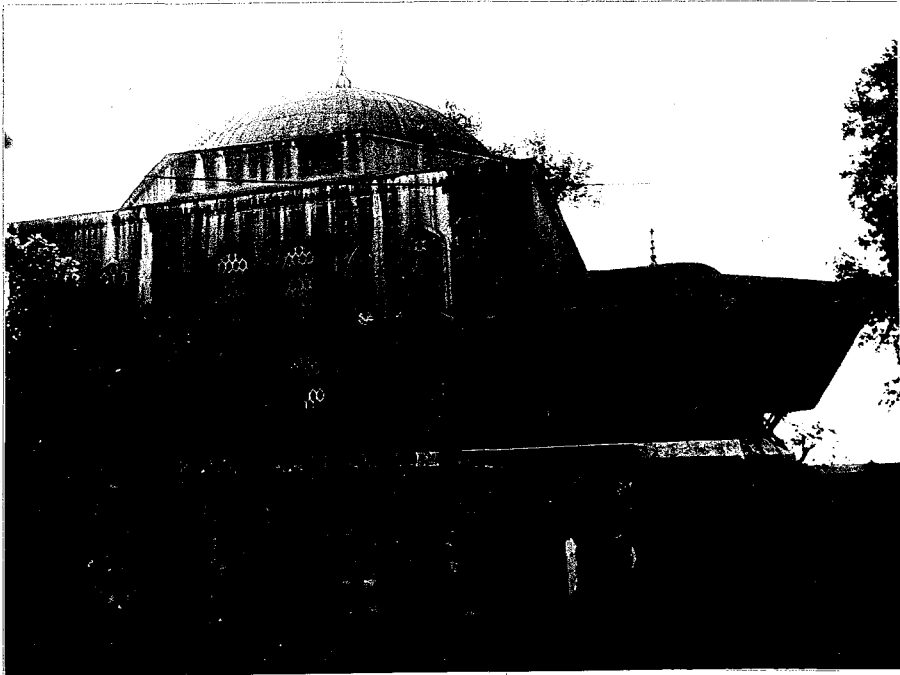
50. Yeni Valide Complex. Royal pavilion.





51. Yeni Valide Complex. Egyptian Bazaar.

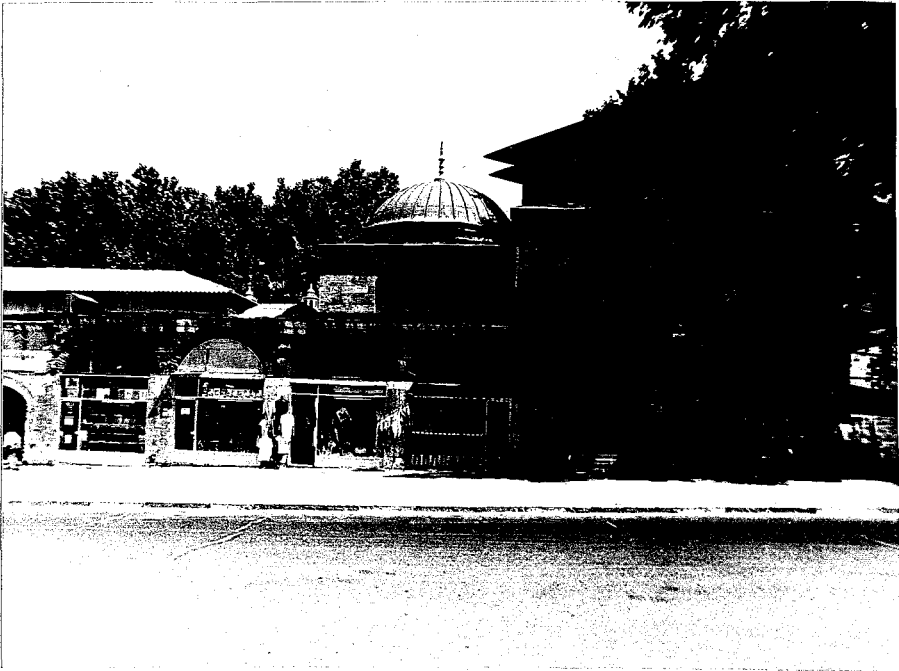
52. Yeni Valide Complex. Türbe of Turhan Valide Sultan.

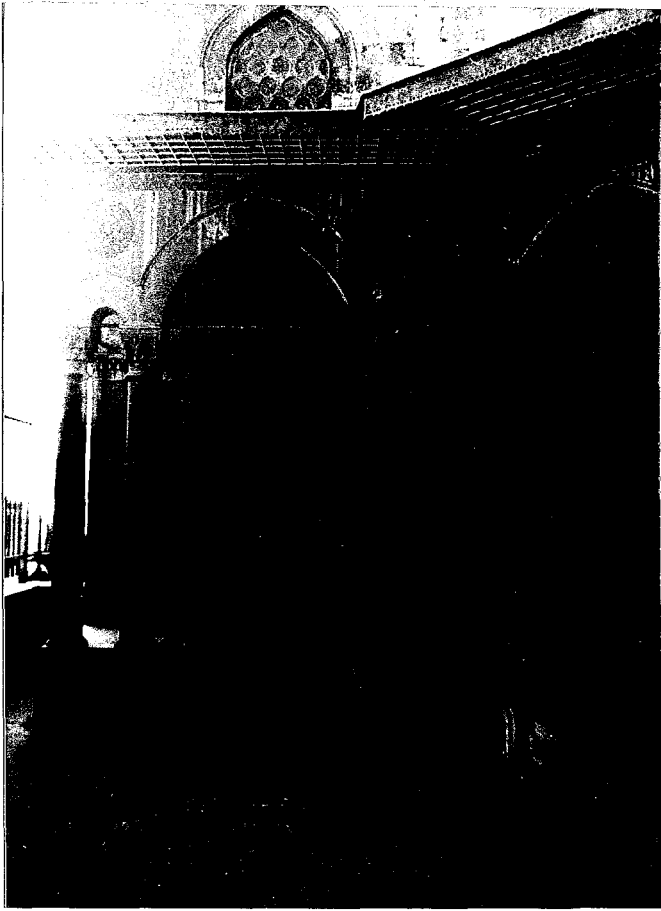




53. Kuyucu Murat Paşa Complex, Istanbul. General view.

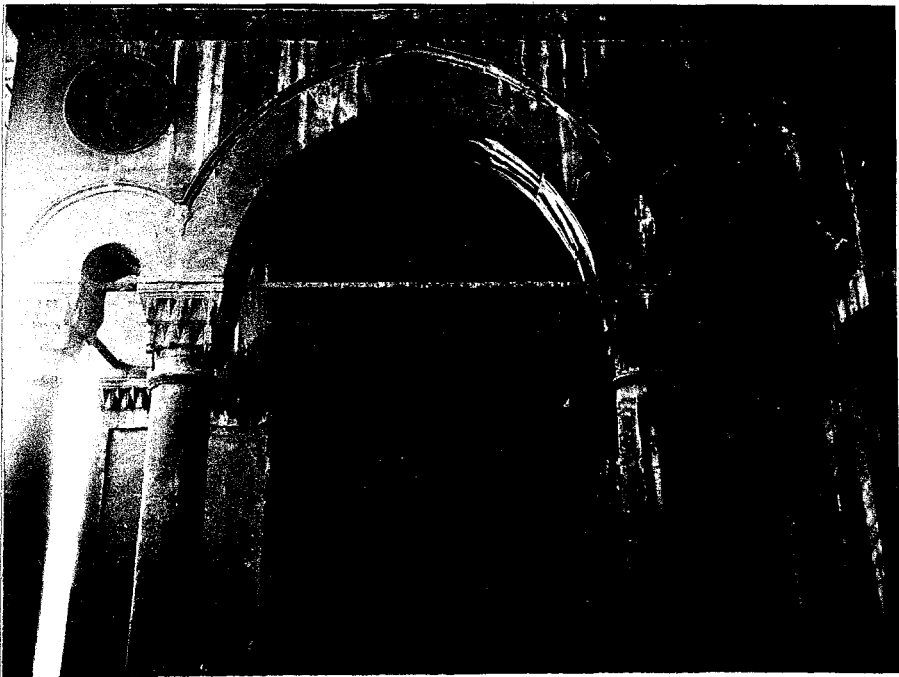
54. Kuyucu Murat Paşa Complex. View from the street.





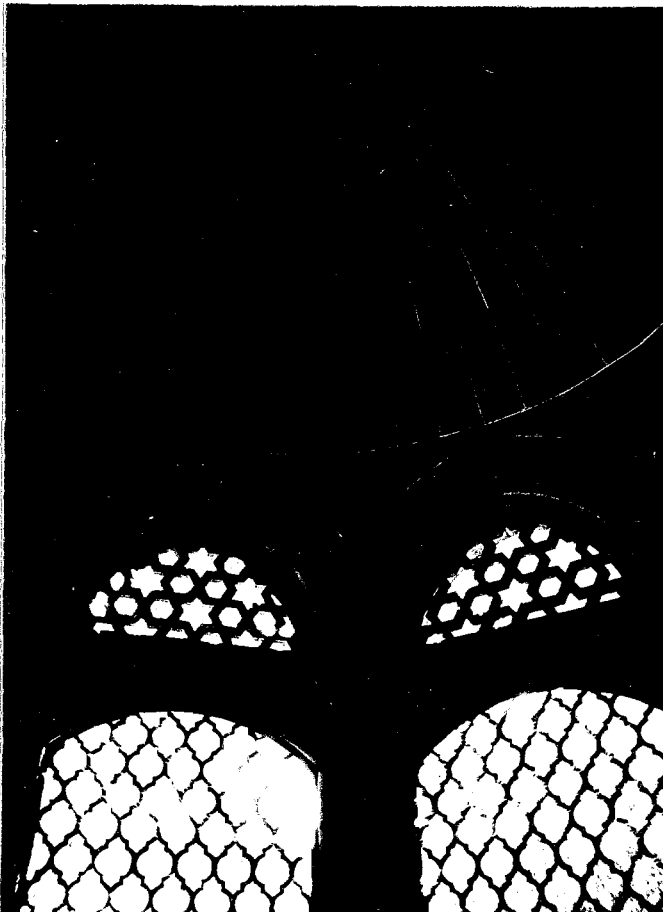
55. Kuyucu Murat Paşa Complex. Entrance to türbe and sebil.

56. Arcaded entrance to the türbe of Kuyucu Murat P. Complex.

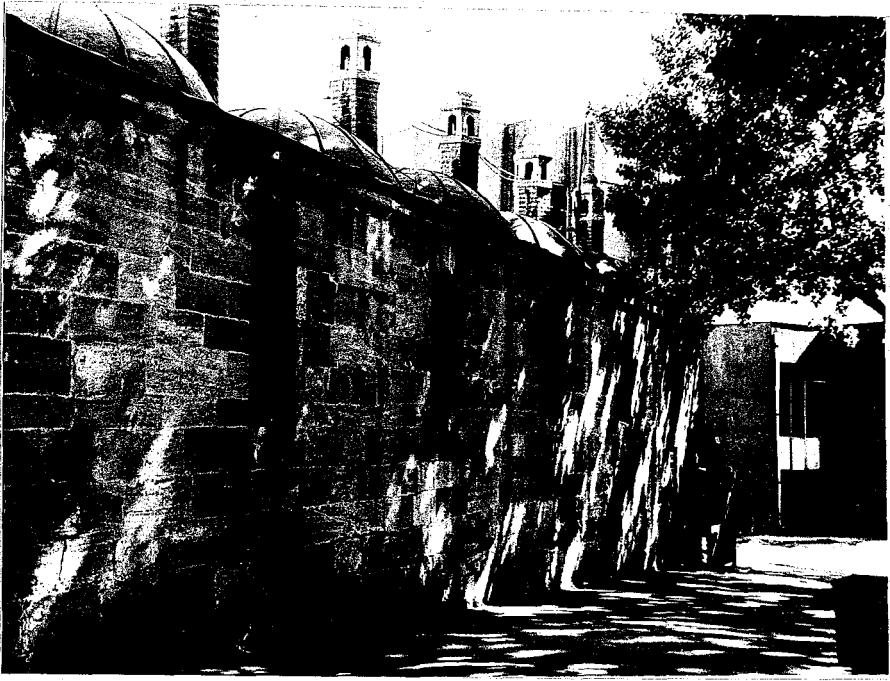




57. Kuyucu Murat Paşa
Complex. Sebil.



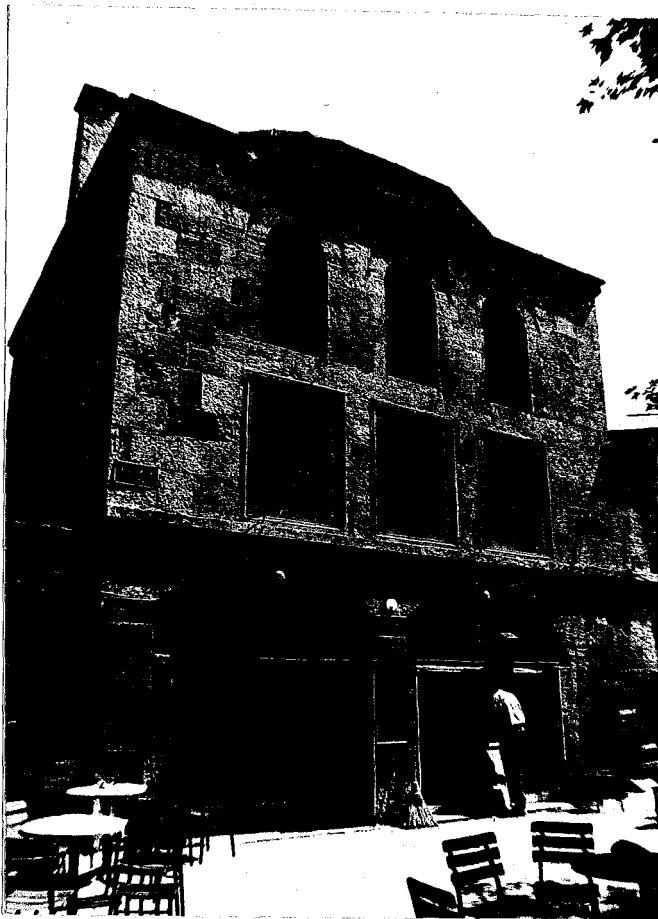
58. An interior view of
the sebil of Kuyucu
Murat Paşa Complex.



59. Medrese cells of Kuyucu Murat Paşa Complex.

60. Kuyucu Murat Paşa Complex. Sibyan mektebi.





61. View of Kuyucu Murat Paşa sıbyan mektebi from the street.

62. Ekmekçioğlu Ahmet Paşa Complex, Istanbul.
General view.

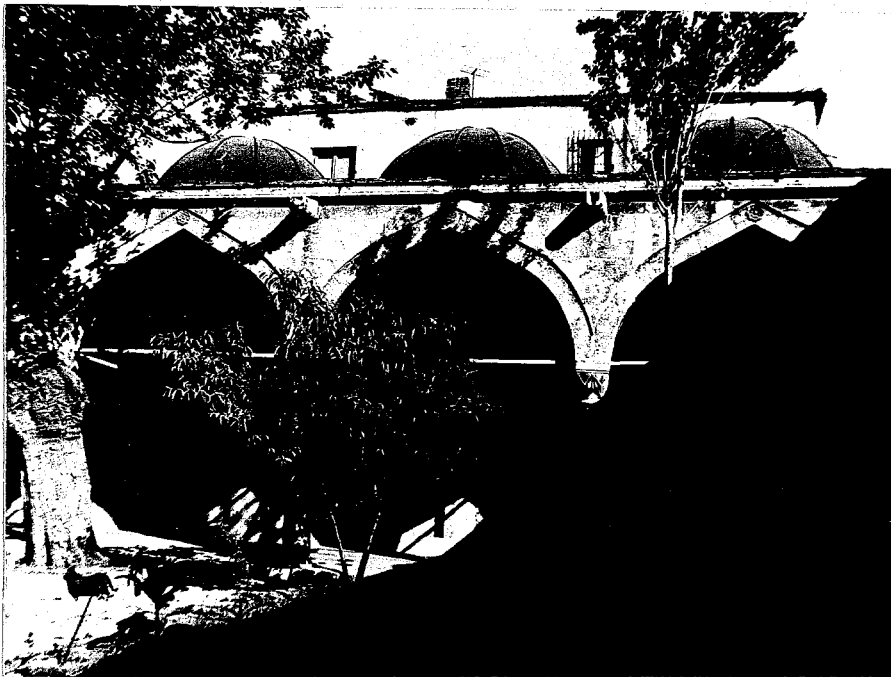




63. Ekmekçioğlu Ahmet Paşa Complex.
Façade of türbe.

64. Ekmekçioğlu Ahmet Paşa Complex. View from the
medrese courtyard.





65. Ekmekçioğlu Ahmet Paşa Complex. Arcade in the medrese courtyard.

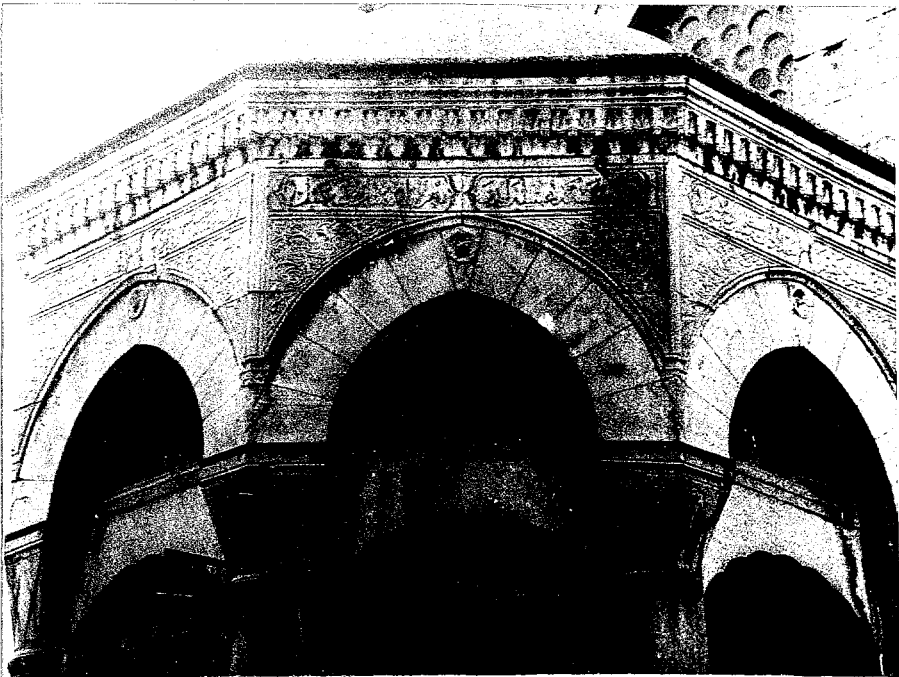
66. Bayram Paşa Complex, Istanbul. General view with Haseki Mosque behind.

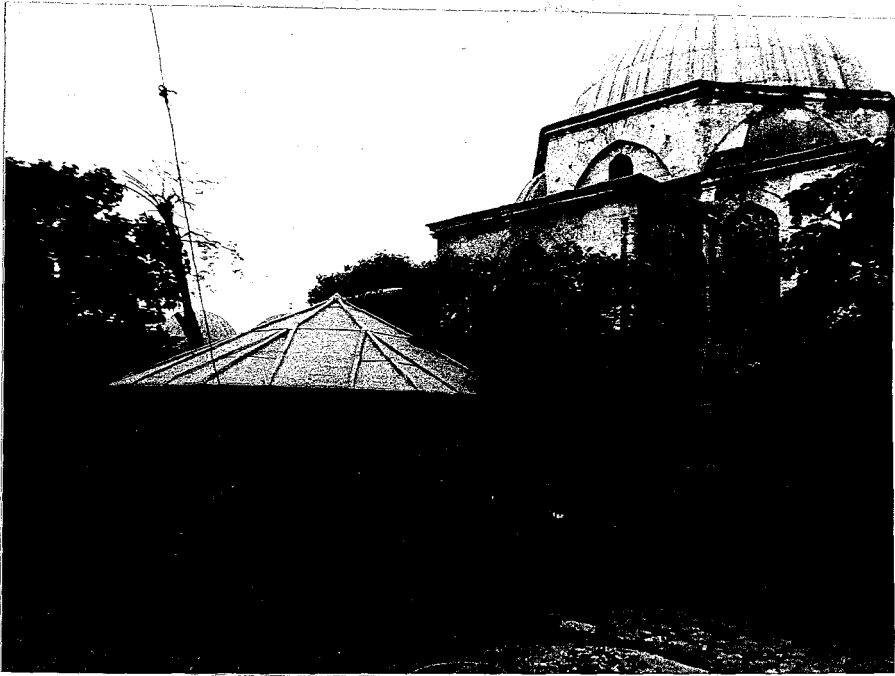




67. Bayram Paşa Complex. Türbe and sebil.

68. Bayram Paşa Complex. Detail from sebil.

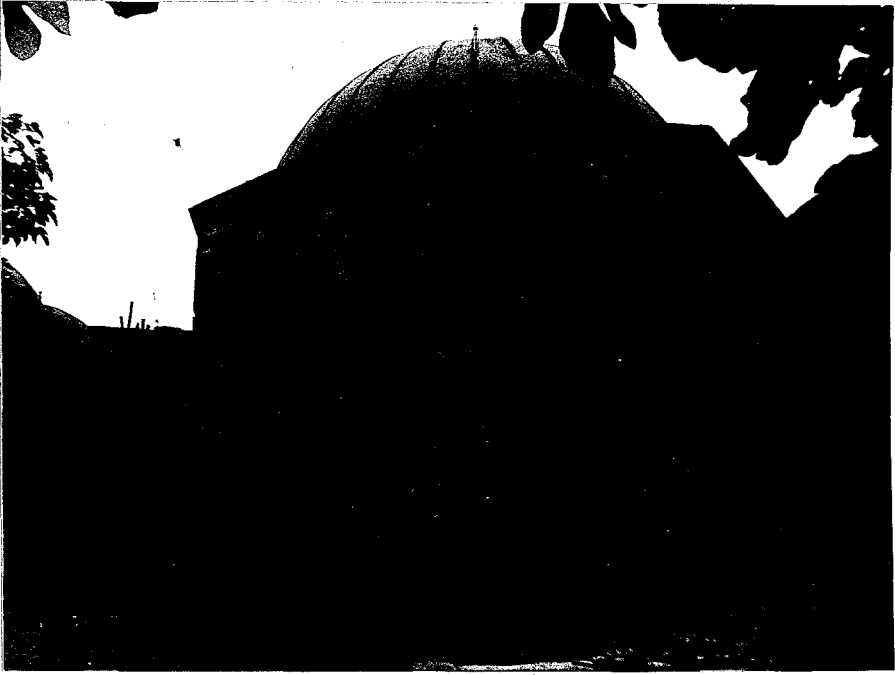




69. Bayram Paşa Complex. Şadırvan and türbe in the tekke courtyard.

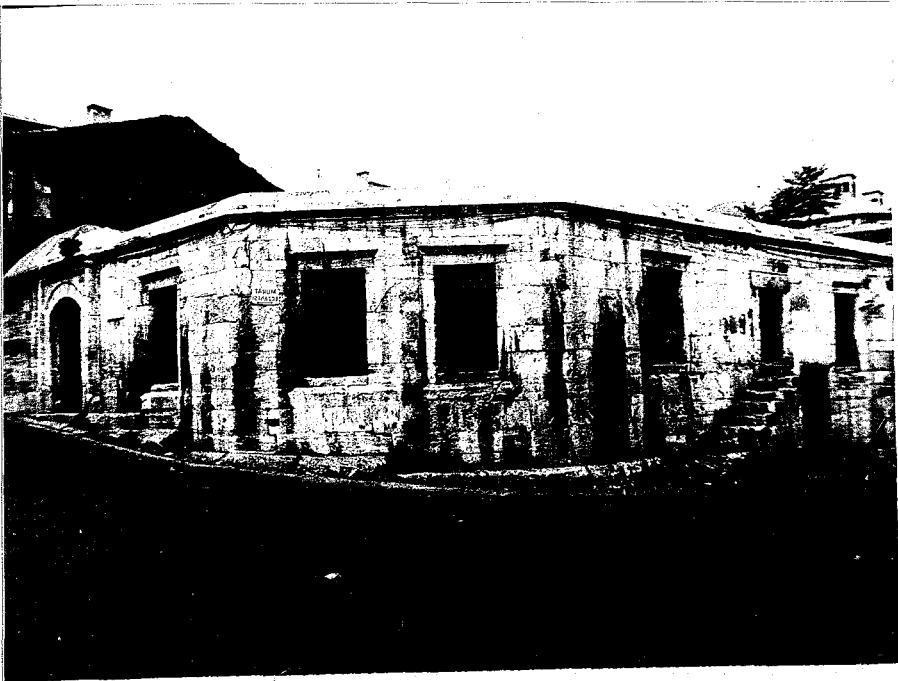
70. Bayram Paşa Complex. Arcades of the tekke cells (cemetery -hazire- on the left)





71. Bayram Paşa Complex. Tekke mescid-semahane building.

72. Bayram Paşa Complex. Stairway leading to the ruined primary school.





73. Bayram Paşa Complex. Outer façade of medrese.

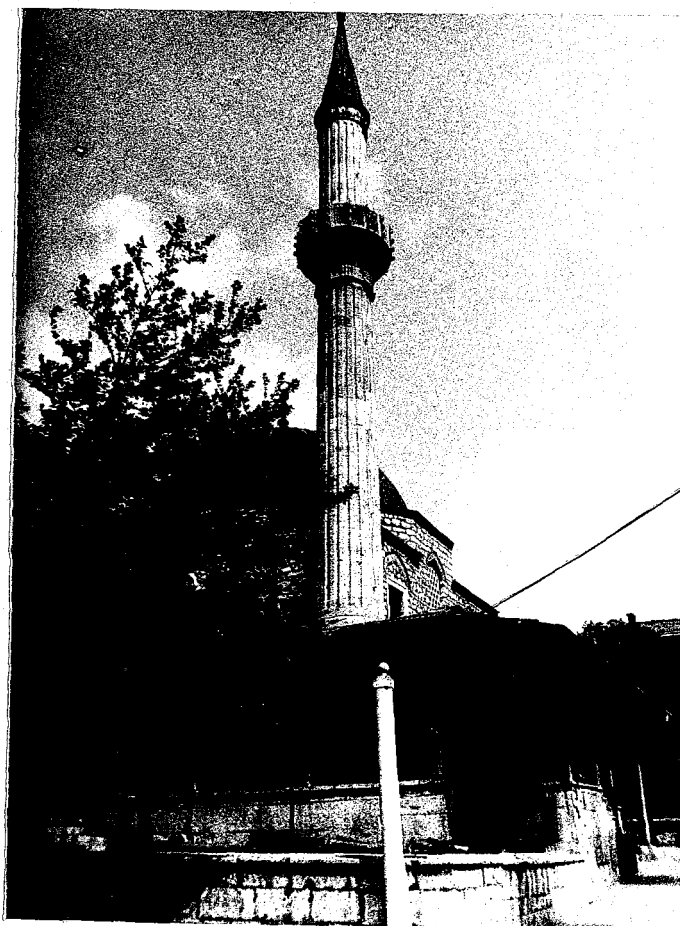
74. Bayram Paşa Complex. Medrese courtyard.

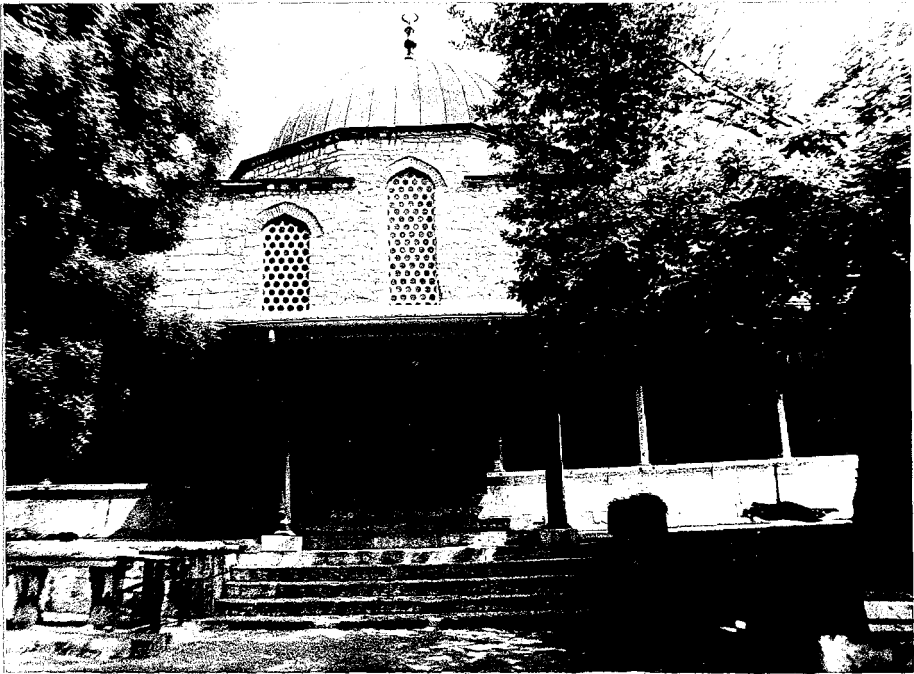




75. Çinili Complex, Istanbul. General view.

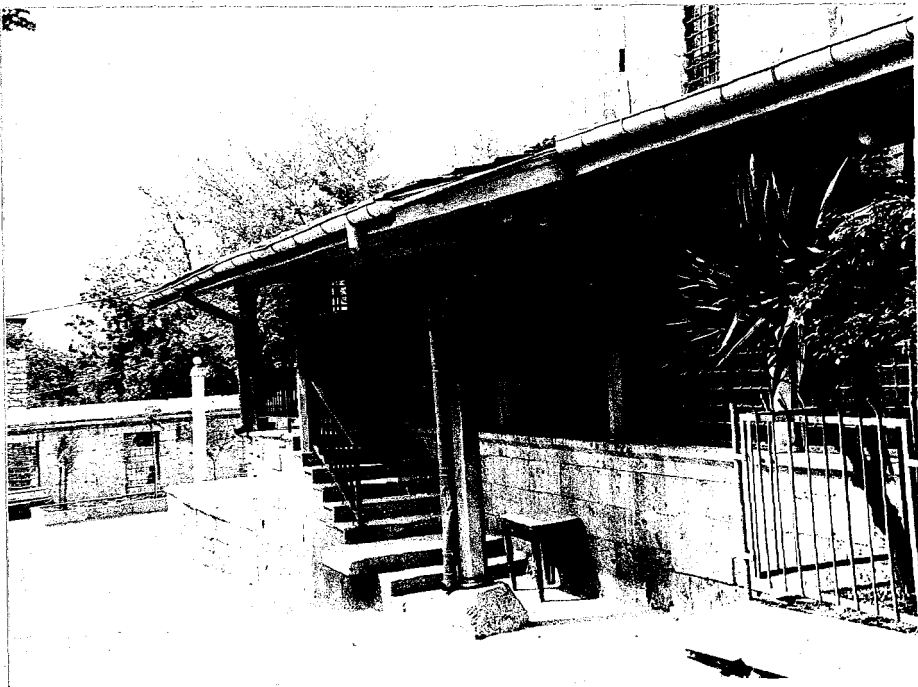
76. Çinili Mosque.





77. Entrance façade of Çinili Mosque.

78. Side façade of Çinili Mosque.

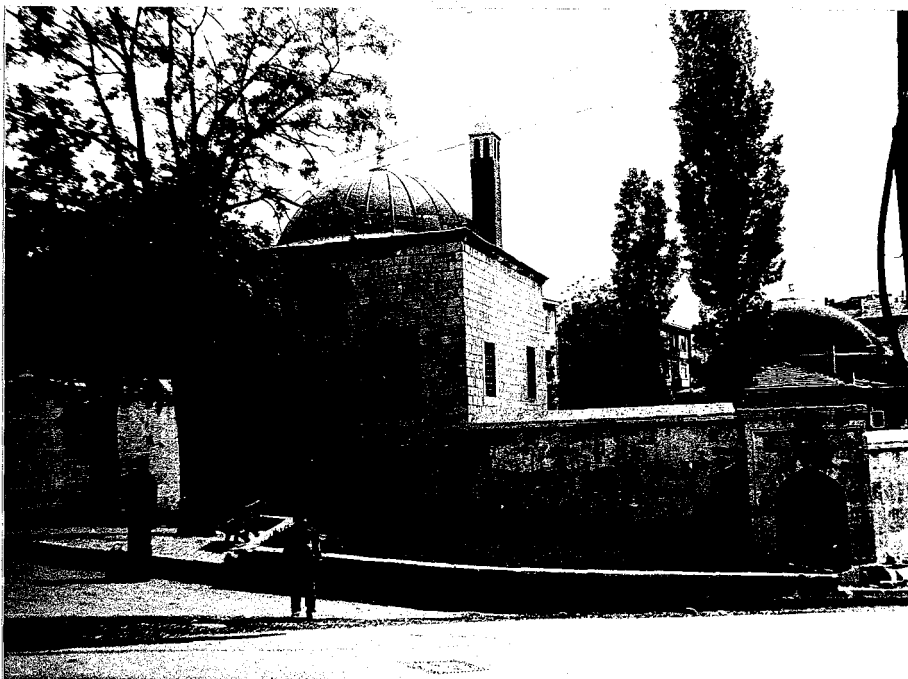




79. Detail of ceramic tile in Çinili Mosque.

80. Detail of ceramic tile in Çinili Mosque.

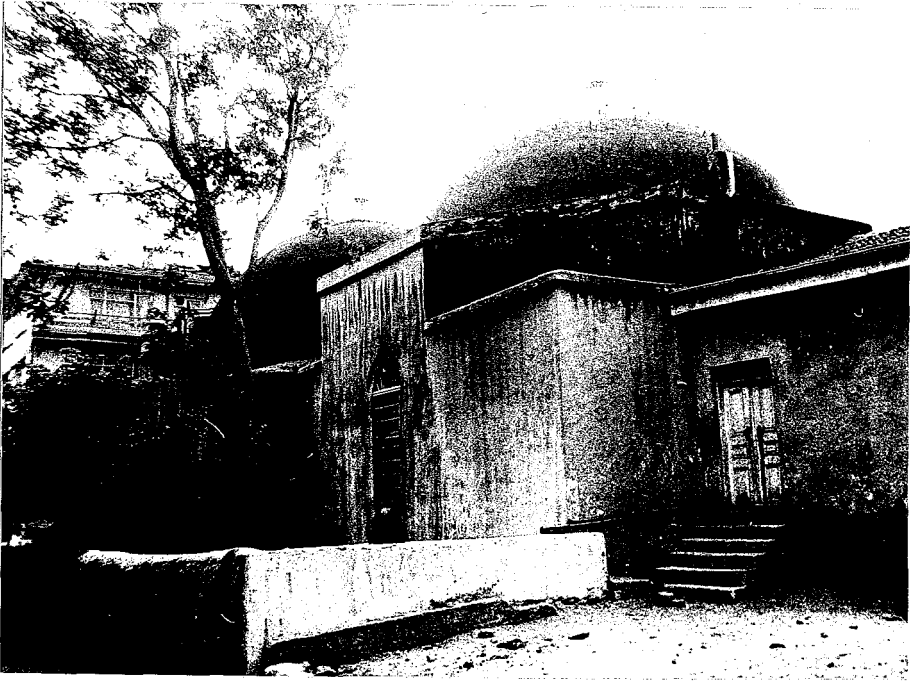




81. Çinili Complex. Sıbyan mektebi and fountain.

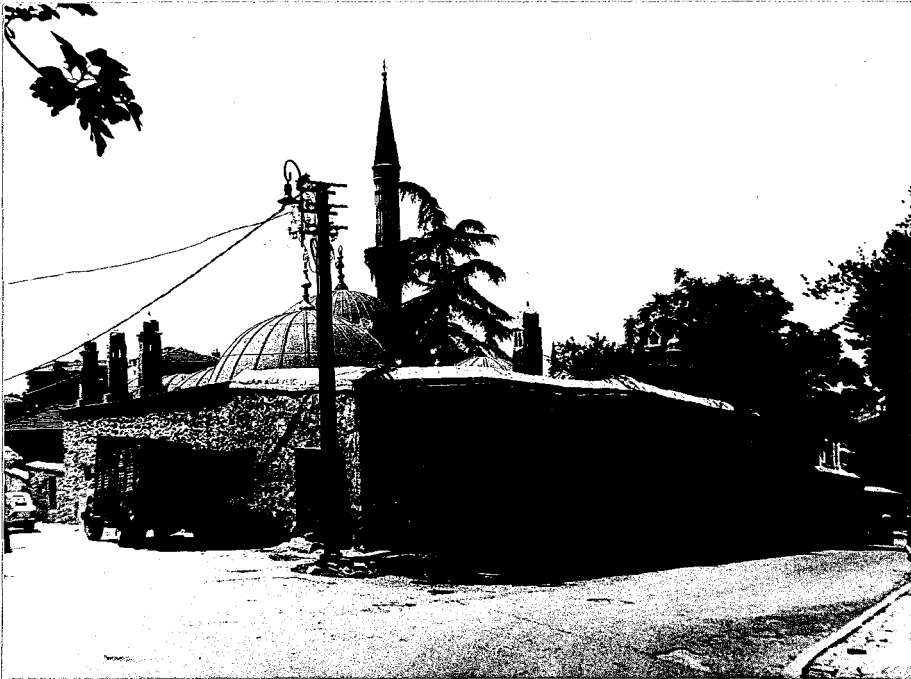
82. Çinili primary school and outer wall of Mosque.

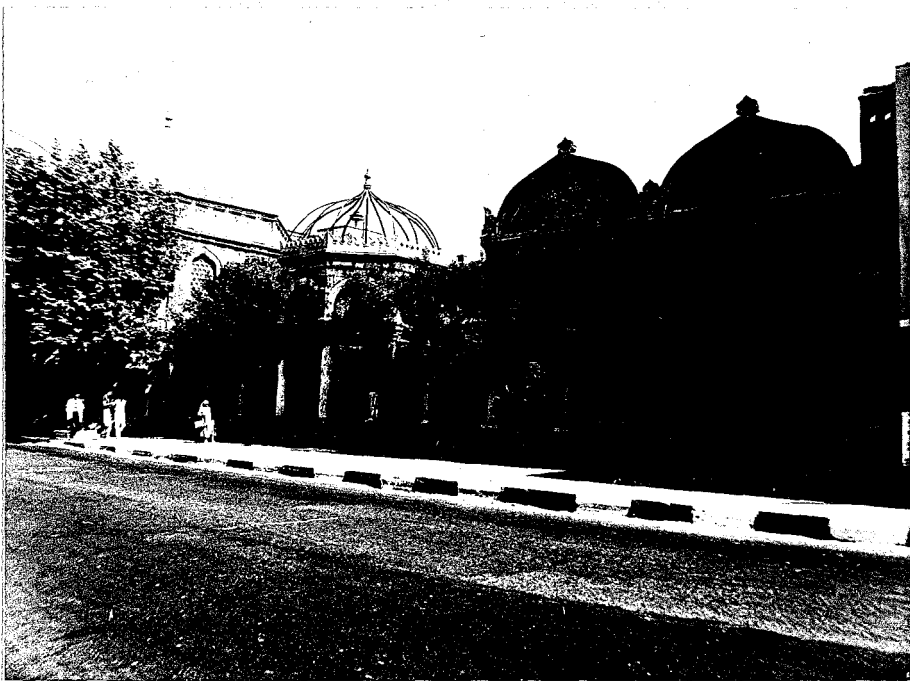




83. Çinili baths.

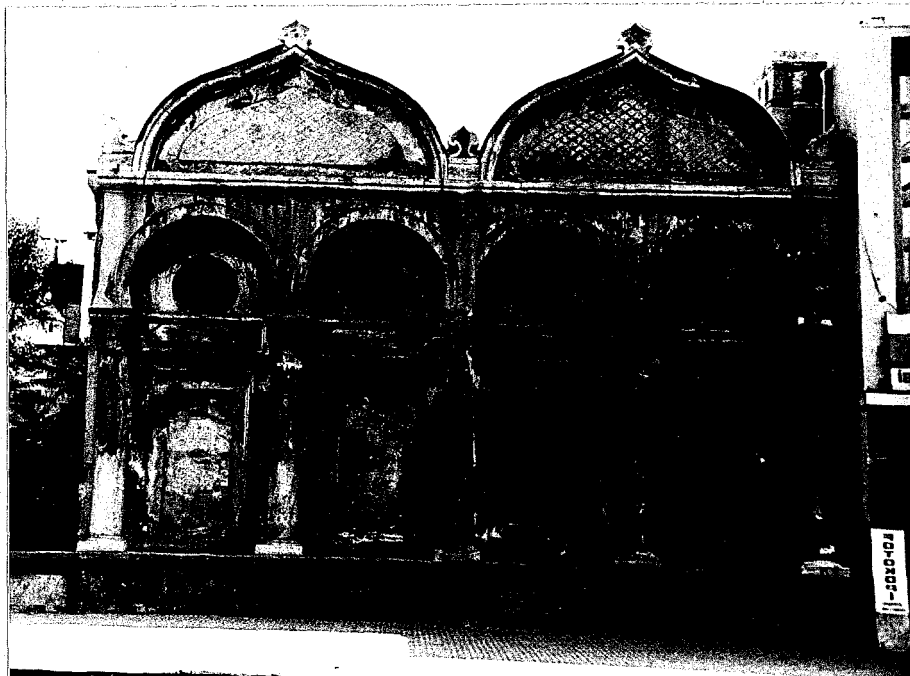
84. View from rear façade of Çinili Complex.

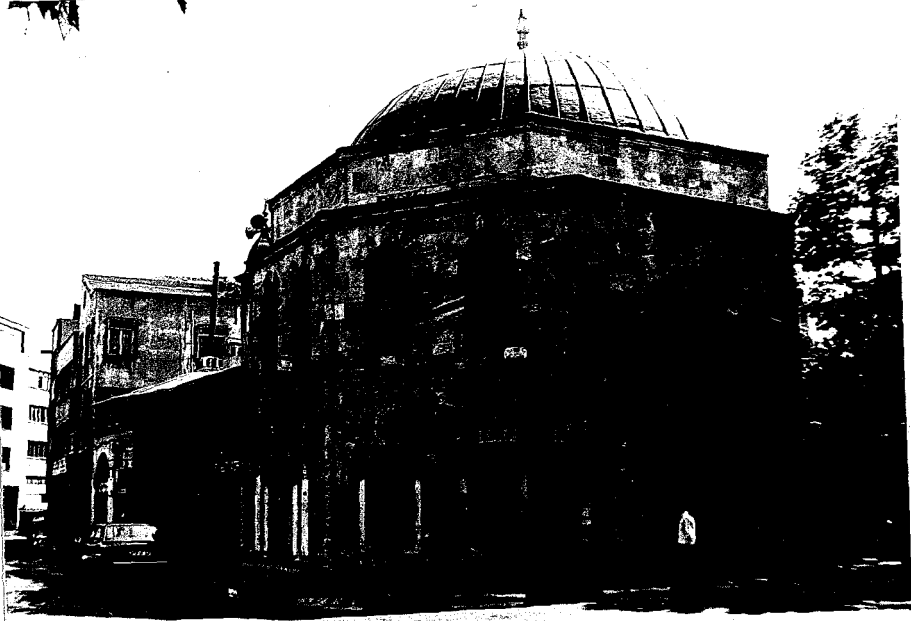




85. Köprülü Complex, Istanbul. General view from the street.

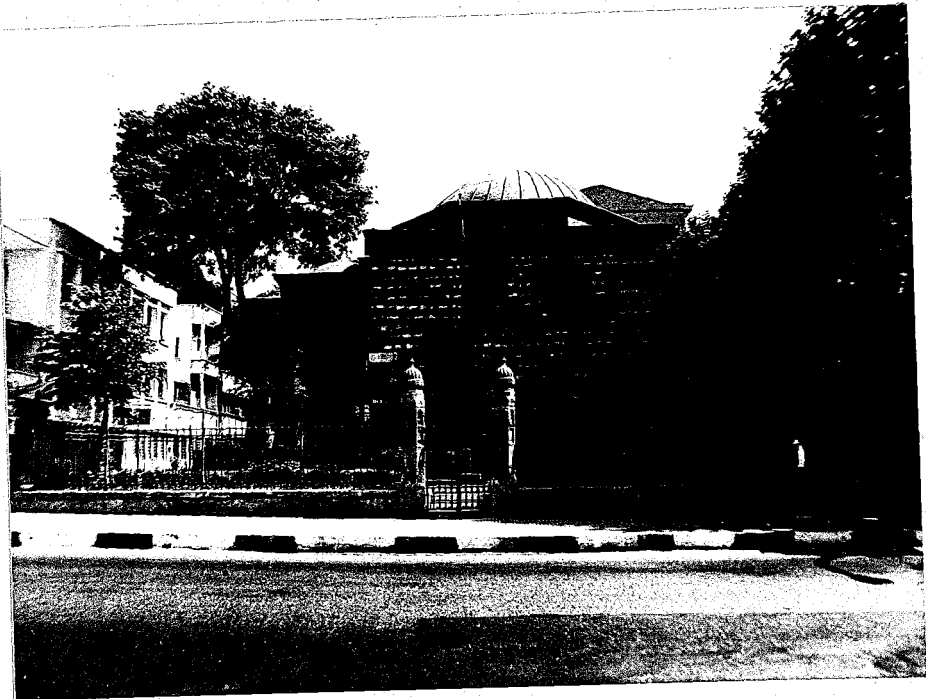
86. View of the medrese of Köprülü Complex from the street.

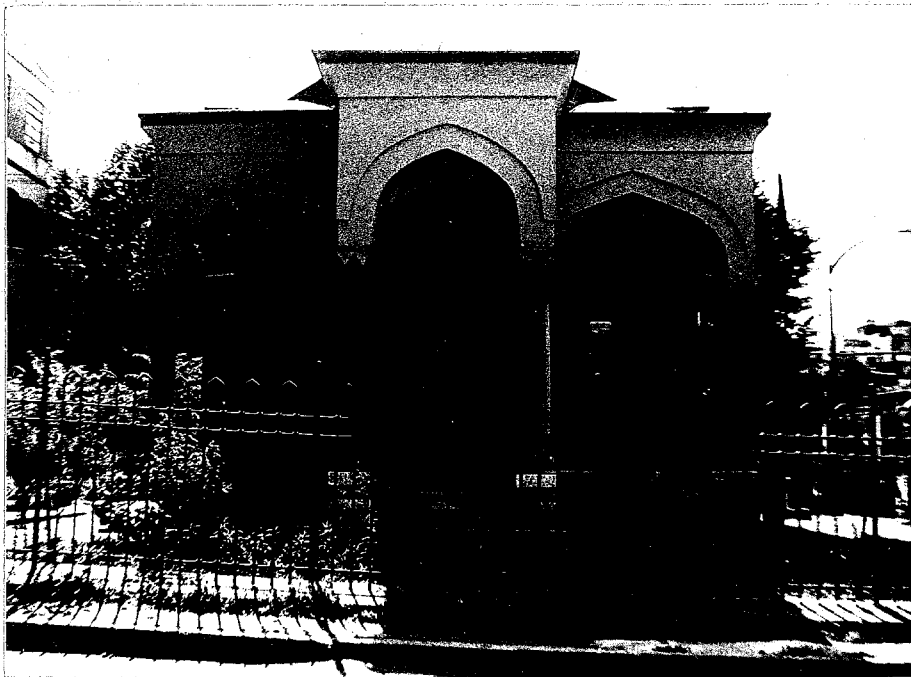




87. Köprülü Complex. Mescid.

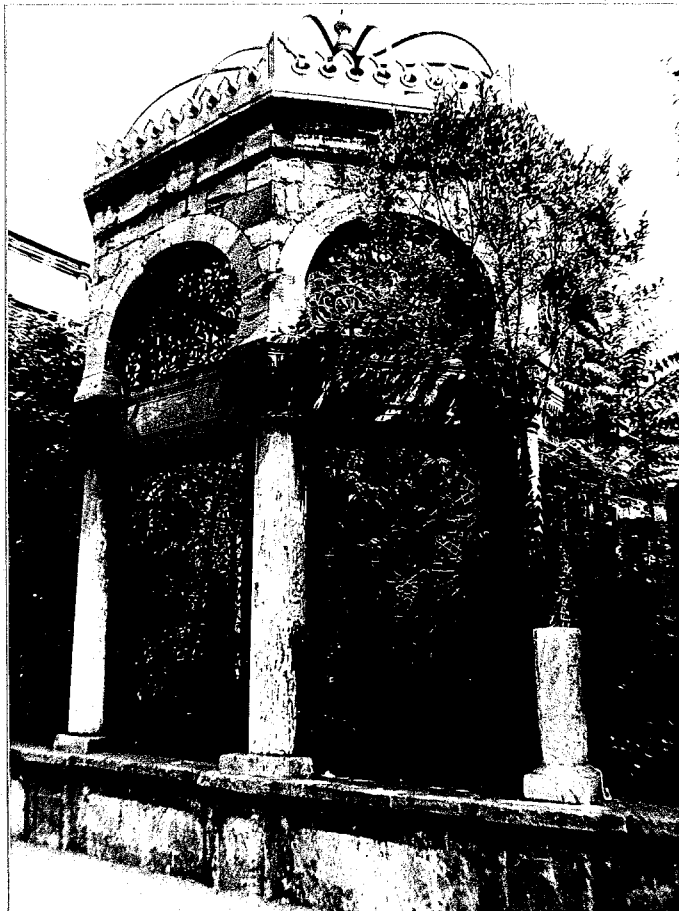
88. View of the library of Köprülü Complex
from the street.

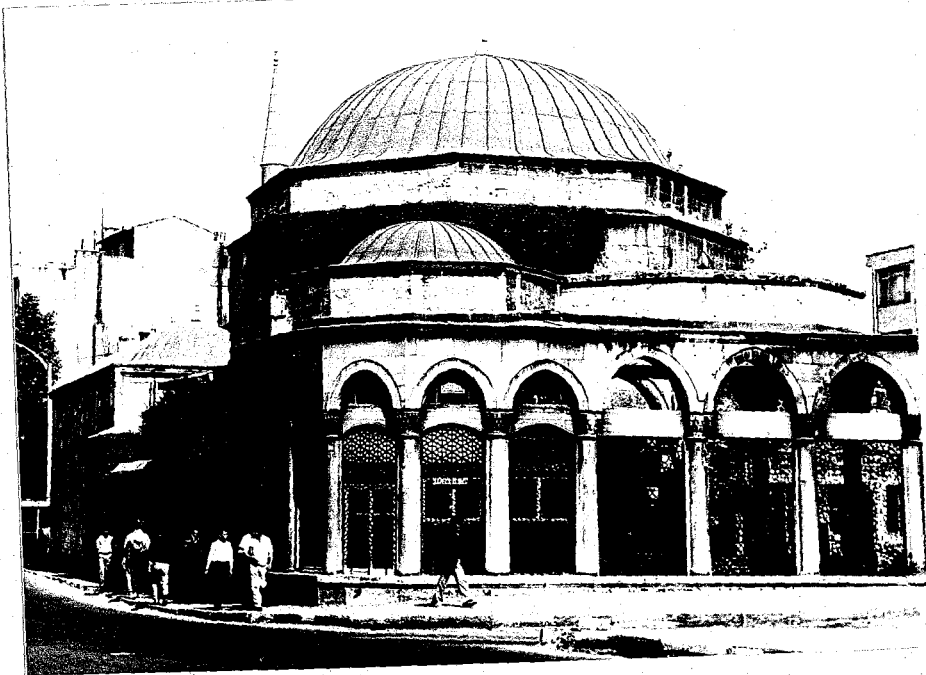




89. Köprülü Complex. Front façade of library.

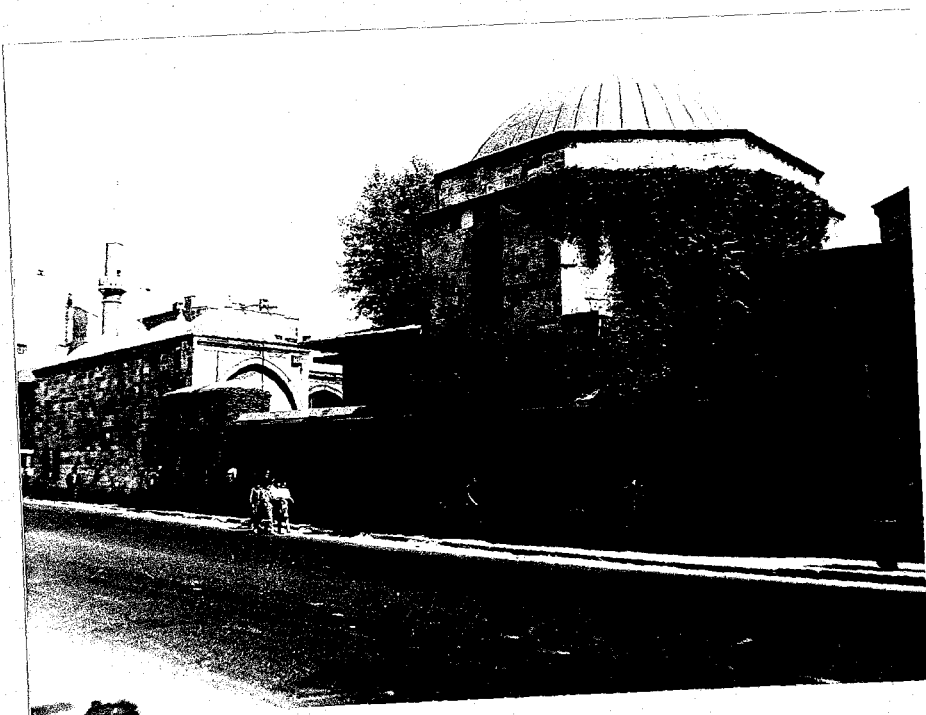
90. Cemetery (hazire) of Köprülü Complex.

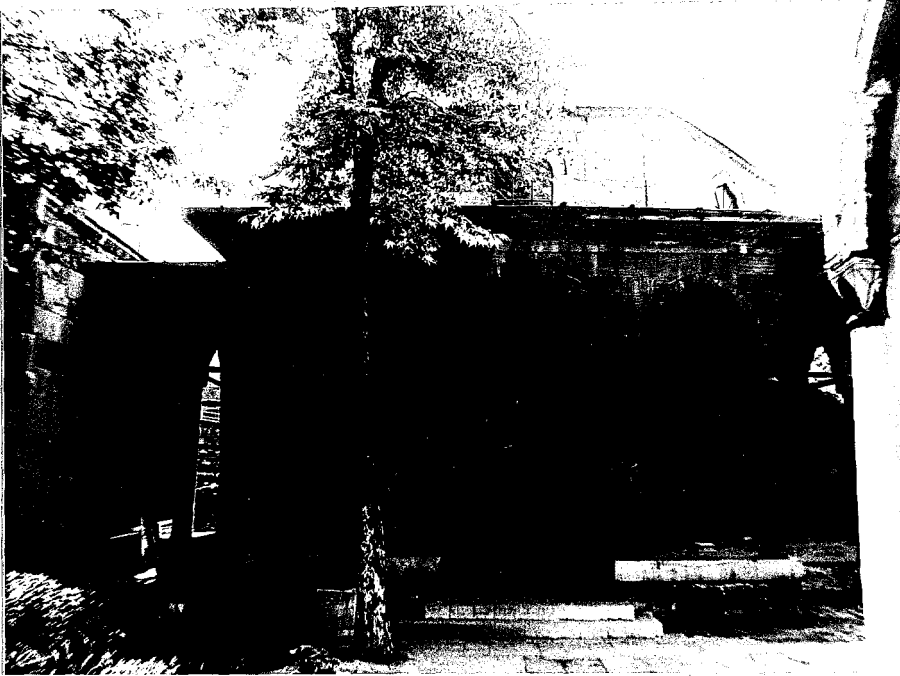




91. Merzifonlu Kara Mustafa Paşa Complex, Istanbul.
Outer view.

92. Merzifonlu Kara Mustafa Paşa Complex. Outer view.





93. Merzifonlu Kara Mustafa Paşa Complex. Detail from the arcade of derthane-mescid.

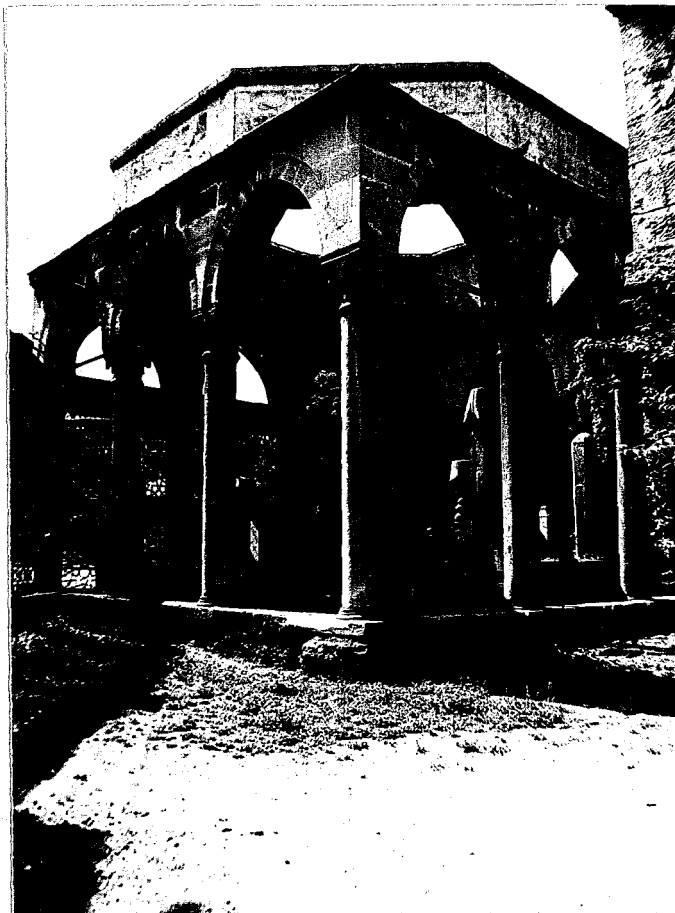
94. Merzifonlu Kara Mustafa Paşa Complex. Derthane-mescid.





95. A view from the arcaded courtyard of Merzifonlu Kara Mustafa Paşa Complex.

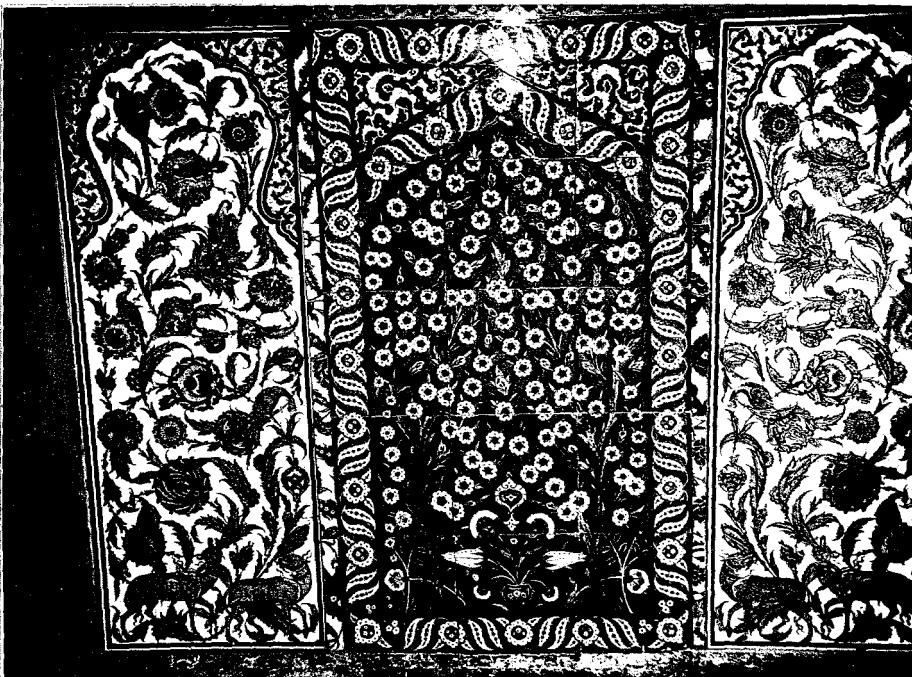
96. Cemetery (hazire) of Merzifonlu Kara Mustafa Paşa Complex.

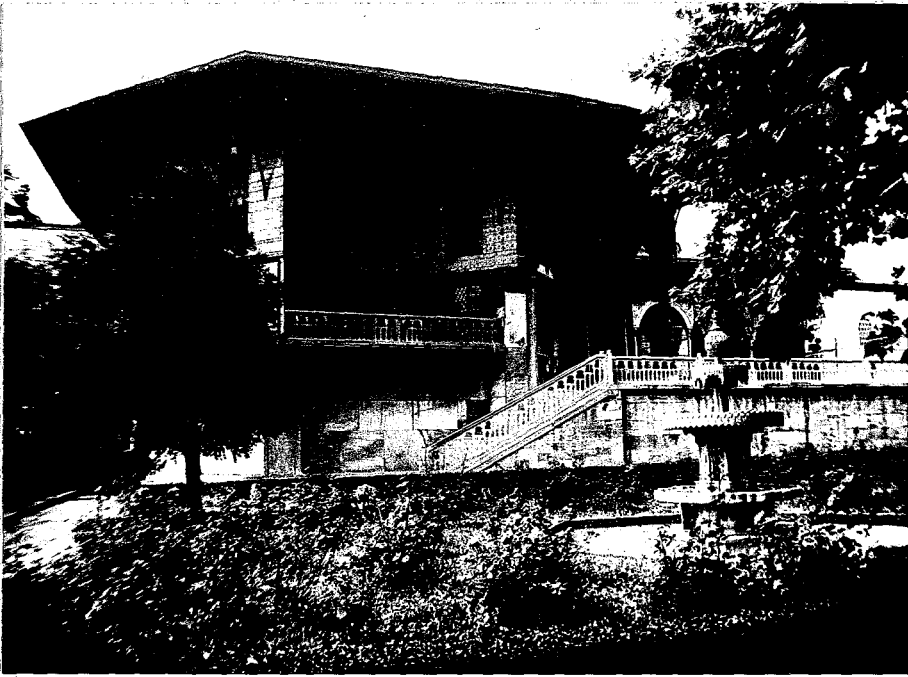




97. Detail from the primary school of Merzifonlu Kara Mustafa Paşa Complex.

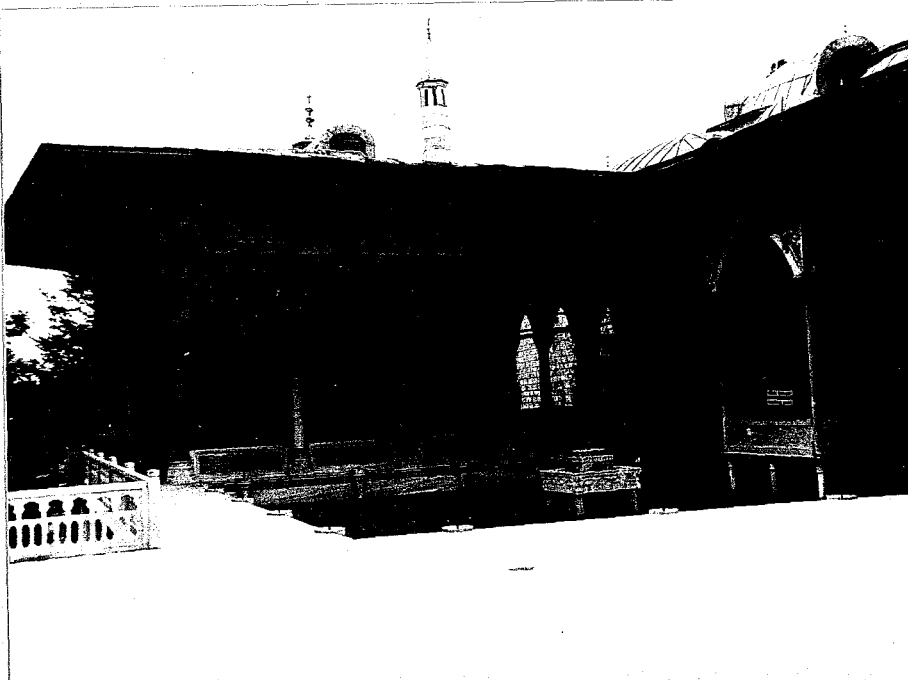
98. Detail of ceramic tile on outer façade of Circumcision Room, Topkapı Palace-Istanbul.





99. Side view of Revan kiosk, Topkapı Palace-Istanbul.

100. Outer view of side façade of Revan kiosk.





IOI. Entrance façade of Revan kiosk.

IO2. Detail from threshold of Revan kiosk.

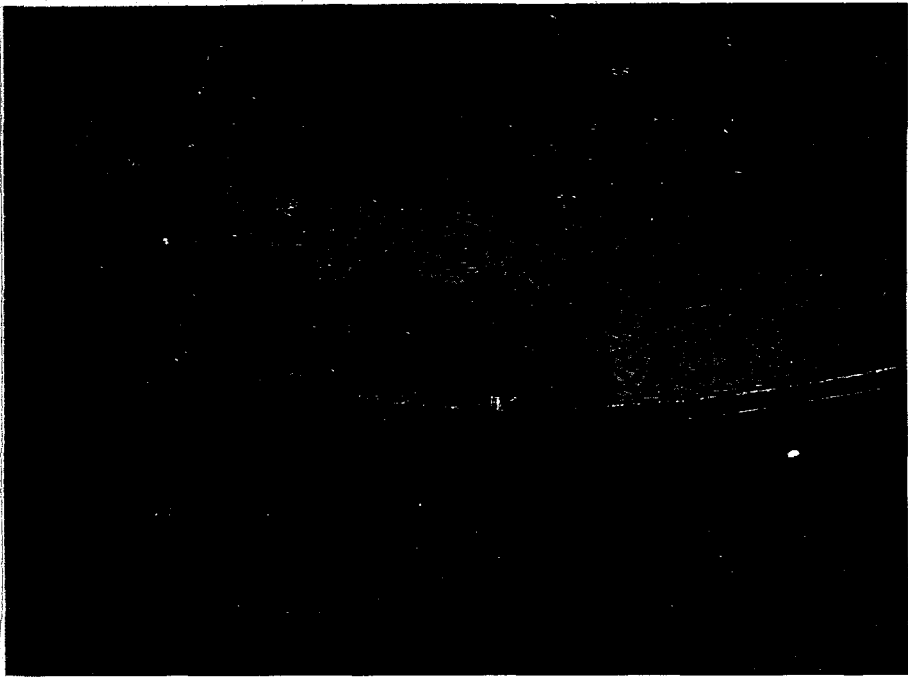




I03. Baghdad kiosk, Topkapı Palace-Istanbul.
View of façade.

I04. Side view of Baghdad kiosk.





I05. Detail from the interior of dome in
Baghdad kiosk.

I06. Detail of ceramic tile in Baghdad kiosk.

